

Datasheet

Heat Install Brass Inserts



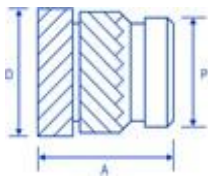
Flange



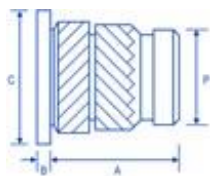
Flush

- The inserts have an opposing herringbone knurl on the outside to give a high level of performance in most Thermoplastics.
- Available in Flush or Flange (headed)
- To be installed into drilled or moulded holes using either direct heat or ultrasonic.
- Designed with a pilot end to aid insertion
- High torque & pull out, suitable for thin boss walls to maximise design space.
- The Flange/headed version to be used for electrical contact and higher performance.

See our full listings with dimensions below



Stock No		Thread	A	D	P	Hole Size	Wall Thickness
2040616	Flush	M3	5.7	4.6	3.9	4.0	1.6
2040615	Flush	M3.5	7.1	5.4	4.7	4.8	1.8
2040617	Flush	M4	8.2	6.3	5.5	5.6	2.1
2040618	Flush	M5	9.5	7.1	6.3	6.4	2.6
2040619	Flush	M6	12.7	8.7	7.9	8.0	3.3



Stock No		Thread	A	B	C	P	Hole Size	Wall Thickness
2040620	Flange	M3	5.7	0.61	5.5	3.9	4.0	1.6
2040621	Flange	M4	8.2	0.91	7.1	5.5	5.6	2.1
2040622	Flange	M5	9.5	1.09	7.9	6.3	6.4	2.6
2040623	Flange	M6	12.7	1.35	9.5	7.9	8.0	3.3