

FEATURES

- IP67
- Front/ screw mounting with M16 thread
- Solder Terminals

RS PRO M12 FEMALE FRONT PANEL MOUNT CONNECTOR 5 PIN 16 X 1.5 mm THREAD SOLDER TERMINAL

RS Stock No.: 2080579



RS Professionally Approved Products bring to you professional quality parts across all product categories. Our product range has been tested by engineers and provides a comparable quality to the leading brands without paying a premium price.

Product Description

ATTRIBUTE 1

M12 Connector M16 Clamp Nut

A series of RS Pro M12 panel-mounted connectors has socket type connection. This panel mount connector has a voltage rating of 250VAC and a current rating of up to 4A per contact.

Features & Benefits

- Front/ screw mounting with M16 thread
- Solder Terminals
- Number of poles: 5

Applications

The RS PRO series of M12 panel mount connectors are generally used in industrial applications. They are typically used when connecting to sensors and actuators. Some of the most popular areas are

- Instrumentation
- Process control
- Robotics
- Assembly lines
- Factory automation
- Industrial automation

General Specifications

Rated Operational Voltage	60 V
Current Rating	4A
Insulation Resistance	$\geq 100 \text{ M}\Omega$
Temperature Range	-25°C ... +75°C
Mounting	Front (M16 x 1.5)
Coding	A-Coded

Material Specifications

Housing Material	Brass Ni Plated
Contact	Cu-Zn
Contact Plating	Gold Flash
Contact Carrier	Nylon 66

O-Ring	Neoprene
Pole	5
Clamp Nut	M16 x 1.5
Termination	Solderable

Protection Category

Degree of Protection	IP67
----------------------	------

Additional Information

Custom Tariff Number	85369090
----------------------	----------

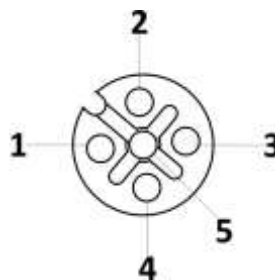
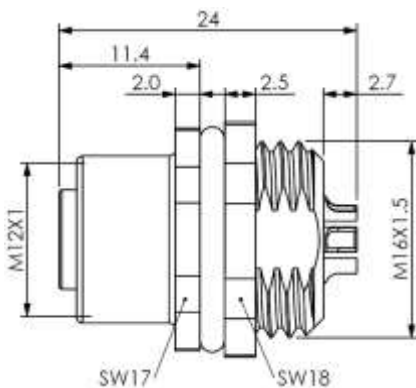
Approvals

Standards Met	IEC 61076-2-101
---------------	-----------------

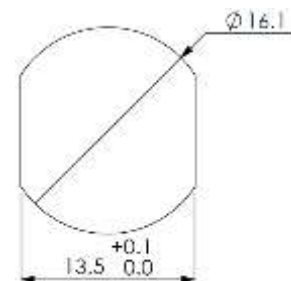
Similar Products

Stock No.	Brand	Product Name	Attribute 1	Attribute 2
144-7602	RS PRO	RS PRO M12 Panel Connector Front 5 Pin 300mm Cable	M12 5 Pin Female Bulk Head Connector	M12 Receptacles

Connection Diagrams / Assembly Diagrams / Illustrations / Accessories



Panel Cutout



All Dimensions are in mm.