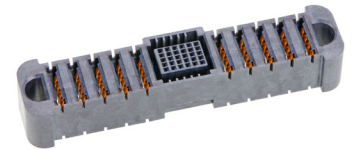
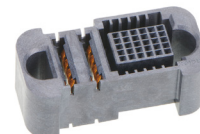
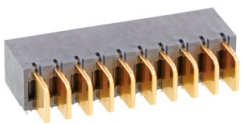


EXTreme Guardian HD Power Connectors >

EXTreme Guardian HD Power Connectors offer configurable hybrid power/signal solutions with increased power in limited footprint spaces. These connectors provide more current in a low-profile package for required space savings and design flexibility.

FEATURES AND ADVANTAGES

Housing Type	LCP
Voltage (max.)	125V
Current (max.)	130.0A
Operating temperatures	-40 to 125°C



Provides one of the greatest current density solutions

Current density up to 130.0A per blade

Has accredited safety agency approval and meets safety requirements

UL and CSA certification

Allows customers to configure their PCB to run AC or DC current with traces that follow their PCB layout; can use the circuits in parallel or as individual circuits

Configurable to have more or less power (1 to 10) and signal (10 to 60) terminals

Saves PCB space and allows for bias of 2.00mm in any direction

Configurable with guides or without guides

Reduces PCB footprint compared to legacy power products

Small centerline spacing of 5.15mm

Provides low interface resistance

Gold contact plating

Provides greater margin for customers' temperature designs

High temperature of 125°C power contact rating

Supports AC or DC high-voltage applications with the lowest feasible voltage drop and irreversible dissipative power losses

Contact design that handles up to 125V

Offers flexible manufacturing options

Through-hole solder and press-fit tails

EXTreme Guardian HD Power Connectors >

MARKETS AND APPLICATIONS

Consumer

Batteries
Charging stations

Telecommunication/Networking

Routers
Switches
1U Rack box
Backplanes
Power supplies
Servers
Data/Computing
High-end servers
Workstations

Industrial

Industrial controls
Warehouse robots

Automotive

Electric vehicles (EVs)
EV transformers
EV chargers
EV audio equipment
EV onboard computing systems

Medical

Power supplies
Medical equipment displays
LED lighting equipment



EV Chargers



Warehouse Robots



Servers

SPECIFICATIONS

REFERENCE INFORMATION

Packaging: Tray
UL File No.: E29179
Designed In: Millimeters
RoHS: Yes
Halogen Free: Yes
Glow Wire Capable: No

ELECTRICAL

Voltage (max.): 125V
Current (max.): 130.0A
Contact Resistance (max.): 0.40 milliohms
Dielectric Withstanding Voltage: 1500V DC
Insulation Resistance (min.): 5000 Megohms

MECHANICAL

Contact Retention to Housing (min.): 390g
Insertion Force to PCB (max.): 18.5 lbs./pin
Mating Force: 1,584g/circuit max. (RA to vert.)
Unmating Force (min.): 240g/circuit
Durability (min.): 200 cycles

PHYSICAL

Housing: LCP
Contact: Copper Alloy
Contact Area — Gold
Solder Tail Area — Tin
Underplating — Nickel
PCB Thickness (min.): 1.58mm
Operating Temperature (power ckts): -40 to +125°C

www.molex.com/link/extremeguardian.html