

**A-series**  
**SET AAP14 10/2.5/10C****Weidmüller Interface GmbH & Co. KG**

Klingenbergstraße 16

D-32758 Detmold

Germany

Fon: +49 5231 14-0

Fax: +49 5231 14-292083

www.weidmueller.com

**Control voltage distribution**

Our tailored AAP potential distribution terminal blocks are ideal for surge current protection and central control voltage distribution. Meanwhile, our new maxGUARD range enables potential distribution with integrated electronic load monitoring in the smallest of installation spaces.

**General ordering data**

Type	SET AAP14 10/2.5/10C
Order No.	<a href="#">2506360000</a>
Version	Modular distribution terminals, PUSH IN, 10 mm <sup>2</sup> , 800 V, 57 A, Dark Beige
GTIN (EAN)	4050118520743
Qty.	1 pc(s).

## A-series SET AAP14 10/2.5/10C

**Weidmüller Interface GmbH & Co. KG**  
 Klingenbergstraße 16  
 D-32758 Detmold  
 Germany  
 Fon: +49 5231 14-0  
 Fax: +49 5231 14-292083  
 www.weidmueller.com

## Technical data

### Dimensions and weights

Width	36.5 mm	Width (inches)	1.437 inch
Height	89 mm	Height (inches)	3.504 inch
Depth	53.5 mm	Depth (inches)	2.106 inch
Depth including DIN rail	54 mm	Net weight	112.17 g

### Temperatures

Continuous operating temp., min.	-60 °C	Continuous operating temp., max.	130 °C
----------------------------------	--------	----------------------------------	--------

### Material data

Material	Wemid	Colour	Dark Beige
Colour of operational elements	Blue, Red	UL 94 flammability rating	V-0

### System specifications

End cover plate required	No	Number of potentials	2
Number of levels	1	No. of clamping points per level	10
Number of potentials per tier	1	Levels cross-connected internally	No
PE connection	No	Mounting rail	TS 35
N-function	Yes	PE function	No
PEN function	No		

### Additional technical data

Installation advice	Mounting rail	Open sides	right
Type of fixing	Snap-on	Type of mounting	TS 35

### Conductors for clamping (additional connection)

Blade size, additional connection	0.6 x 3.5 mm	Clamping range, further connection, max.	2.5 mm <sup>2</sup>
Clamping range, further connection, min.	0.5 mm <sup>2</sup>	Conductor cross-section, flexible plus plastic collar DIN 46228/1, further connection, max.	2.5 mm <sup>2</sup>
Conductor cross-section, flexible plus plastic collar DIN 46228/1, further connection, min.	0.5 mm <sup>2</sup>	Conductor cross-section, flexible, further connection, min.	0.5 mm <sup>2</sup>
Connection direction	top	Connection type, additional connection	PUSH IN
Cross-section for connected wire, AWG, additional connection, max.	AWG 12	Cross-section for connected wire, AWG, additional connection, min.	AWG 28
Cross-section for connected wire, flexible, further connection, max.	2.5 mm <sup>2</sup>	Cross-section for connected wire, multi-core, further connection, max.	2.5 mm <sup>2</sup>
Cross-section for connected wire, multi-core, further connection, min.	0.5 mm <sup>2</sup>	Cross-section for connected wire, solid-core, further connection, max.	2.5 mm <sup>2</sup>
Cross-section for connected wire, solid-core, further connection, min.	0.5 mm <sup>2</sup>	Rated cross-section, further connection	2.5 mm <sup>2</sup>
Stripping length, additional connection	10 mm		

**A-series**  
**SET AAP14 10/2.5/10C**

**Weidmüller Interface GmbH & Co. KG**  
 Klingenbergstraße 16  
 D-32758 Detmold  
 Germany  
 Fon: +49 5231 14-0  
 Fax: +49 5231 14-292083  
 www.weidmueller.com

**Technical data**
**Conductors for clamping (rated connection)**

Blade size	1.0 x 5.5 mm	Clamping range, max.	10 mm <sup>2</sup>
Clamping range, min.	0.5 mm <sup>2</sup>	Connection cross-section, stranded, max.	10 mm <sup>2</sup>
Connection cross-section, stranded, min.	0.5 mm <sup>2</sup>	Connection direction	top
Gauge to IEC 60947-1	A6	Number of connections	2
Stripping length	18 mm	Twin wire-end ferrules, max.	4 mm <sup>2</sup>
Twin wire-end ferrules, min.	0.5 mm <sup>2</sup>	Type of connection	PUSH IN
Wire connection cross section AWG, max.	AWG 6	Wire connection cross section AWG, min.	AWG 20
Wire connection cross section, finely stranded, max.	10 mm <sup>2</sup>	Wire connection cross-section, finely stranded with wire-end ferrules DIN 46228/1, max.	10 mm <sup>2</sup>
Wire connection cross-section, finely stranded with wire-end ferrules DIN 46228/1, min.	0.5 mm <sup>2</sup>	Wire connection cross-section, finely stranded with wire-end ferrules DIN 46228/4, max.	10 mm <sup>2</sup>
Wire connection cross-section, finely stranded with wire-end ferrules DIN 46228/4, min.	0.5 mm <sup>2</sup>	Wire connection cross-section, finely stranded, min.	0.5 mm <sup>2</sup>
Wire connection cross-section, solid core, max.	10 mm <sup>2</sup>	Wire connection cross-section, solid core, min.	0.5 mm <sup>2</sup>

**Rating data**

Rated cross-section	10 mm <sup>2</sup>	Rated voltage	800 V
Rated current	57 A	Current at maximum wires	57 A
Standards	In accordance with IEC 60947-7-1	Volume resistance according to IEC 60947-7-x	0.56 mΩ
Rated impulse withstand voltage	8 kV	Pollution severity	3

**Classifications**

ETIM 6.0	EC000897	eClass 6.2	27-14-11-20
eClass 9.1	27-14-11-20		

**Product information**

Descriptive text technical data	Approval in progress
Instructions for accessories	All MultiMark variants (MM) = strip markers

**Downloads**

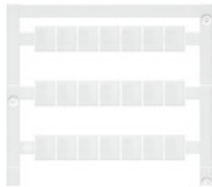
Approval/Certificate/Document of Conformity	<a href="#">DE PT0205 20180316 018 ISSUE01.pdf</a>
Engineering Data	<a href="#">STEP</a>

## A-series SET AAP14 10/2.5/10C

**Weidmüller Interface GmbH & Co. KG**  
 Klingenbergstraße 16  
 D-32758 Detmold  
 Germany  
 Fon: +49 5231 14-0  
 Fax: +49 5231 14-292083  
 www.weidmueller.com

## Accessories

### Custom printing



WS markers are the perfect match for the W-series connectors. Thanks to their system compatibility, the WS tags can also be used with the I-series and the Z-series. The large marking surfaces do not only permit long character strings but also multi-line text. WS markers are ideal for labels with long, customised character strings. Thanks to the proven MultiCard format, printing with laser printer, PrintJet ADVANCED, plotter or MC-Mobilo is possible.

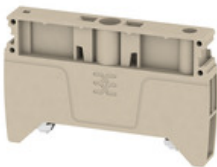
- Can be fitted in strips or individually
- Markers in proven MultiCard format

**For custom printing:** Please send us a file of our labeling software M-Print PRO or M-Print PRO Online (without installation) for your labeling specifications.

### General ordering data

Type	Order No.	Version	GTIN (EAN)	Qty.
WS 10/8 PLUS MC SDR	<a href="#">1906030000</a>	WS, Terminal marker, 10 x 8 mm, Pitch in mm (P): 8.00 Weidmueller, To customer specification	4032248528196 84	pc(s).

### End brackets



#### Spring connection with PUSH IN Technology

The innovative PUSH IN technology reduces the amount of time you spend on wiring to a minimum. Direct insertion guarantees high conductor pull-out forces and simple handling for all conductor types.

### General ordering data

Type	Order No.	Version	GTIN (EAN)	Qty.
AEB 35 SC/1 BK	<a href="#">2475310000</a>	A-series, End bracket	4050118487114 50	pc(s).
AEB 35 SC/1	<a href="#">1991920000</a>	A-series, End bracket	4050118376722 50	pc(s).

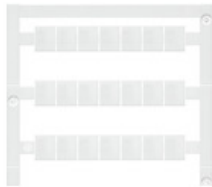
## A-series

### SET AAP14 10/2.5/10C

**Weidmüller Interface GmbH & Co. KG**  
 Klingenbergstraße 16  
 D-32758 Detmold  
 Germany  
 Fon: +49 5231 14-0  
 Fax: +49 5231 14-292083  
 www.weidmueller.com

## Accessories

### Blank



WS markers are the perfect match for the W-series connectors. Thanks to their system compatibility, the WS tags can also be used with the I-series and the Z-series. The large marking surfaces do not only permit long character strings but also multi-line text. WS markers are ideal for labels with long, customised character strings. Thanks to the proven MultiCard format, printing with laser printer, PrintJet ADVANCED, plotter or MC-Mobilo is possible.

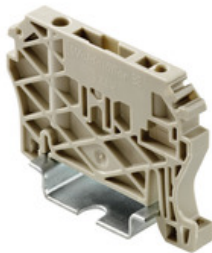
- Can be fitted in strips or individually
- Markers in proven MultiCard format

**For custom printing:** Please send us a file of our labeling software M-Print PRO or M-Print PRO Online (without installation) for your labeling specifications.

#### General ordering data

Type	Order No.	Version	GTIN (EAN)	Qty.
WS 10/8	<a href="#">1905950000</a>	WS, Terminal marker, 10 x	4032248528103	420 pc(s).
PLUS MC NE		8 mm, Pitch in mm (P): 8.00		
WS		Weidmueller, White		

### End brackets



#### Spring connection with tension clamp Technology

Tension clamp technology is a universal contact system for all common conductor connection types. Its fantastic level of flexibility makes the tension clamp a profitable alternative connection.

#### General ordering data

Type	Order No.	Version	GTIN (EAN)	Qty.
ZEW 35 GR	<a href="#">1238040000</a>	Z-series, End bracket	4050118024401	20 pc(s).
ZEW 35 V0	<a href="#">1264170000</a>	Z-series, End bracket	4050118137170	20 pc(s).
ZEW 35	<a href="#">9540000000</a>	Z-series, End bracket	4008190956264	20 pc(s).

## A-series

### SET AAP14 10/2.5/10C

**Weidmüller Interface GmbH & Co. KG**  
 Klingenbergstraße 16  
 D-32758 Detmold  
 Germany  
 Fon: +49 5231 14-0  
 Fax: +49 5231 14-292083  
 www.weidmueller.com

## Accessories

### Digital multimeters



Multimeters are capable of measuring a number of variables. Each instrument can measure voltage and resistance, as well as performing continuity and diode testing as standard.

In addition, the individual multimeters also feature extra measuring options such as current, frequency, capacitance and temperature. Digital multimeters have the advantage of a clear display which can be read easily and directly. With these instruments, mistakes arising from faulty conversion of the measuring ranges or misreading the display are a thing of the past.

#### General ordering data

Type	Order No.	Version	GTIN (EAN)	Qty.
ZUB	<a href="#">9205270000</a>	Multimeter	4032248723522	1 pc(s).
MULTIMETER				

### ZQV 2.5N



#### Spring connection with PUSH IN Technology

The innovative PUSH IN technology reduces the amount of time you spend on wiring to a minimum. Direct insertion guarantees high conductor pull-out forces and simple handling for all conductor types.

#### General ordering data

Type	Order No.	GTIN (EAN)	Qty.
ZQV 2.5N/10	<a href="#">2108910000</a>	4050118486018	20 pc(s).
RD			
ZQV 2.5N/8	<a href="#">2108870000</a>	4050118448481	20 pc(s).
RD			
ZQV 2.5N/50	<a href="#">2109000000</a>	4050118486001	5 pc(s).
RD			
ZQV 2.5N/5	<a href="#">2108710000</a>	4050118448511	20 pc(s).
RD			
ZQV 2.5N/2	<a href="#">2108470000</a>	4050118448542	60 pc(s).
RD			
ZQV 2.5N/4	<a href="#">2108700000</a>	4050118448528	60 pc(s).
RD			
ZQV 2.5N/9	<a href="#">2108900000</a>	4050118448474	20 pc(s).
RD			
ZQV 2.5N/20	<a href="#">2108920000</a>	4050118485899	20 pc(s).
RD			
ZQV 2.5N/3	<a href="#">2108690000</a>	4050118448535	60 pc(s).
RD			
ZQV 2.5N/7	<a href="#">2108810000</a>	4050118448498	20 pc(s).
RD			

## A-series

### SET AAP14 10/2.5/10C

**Weidmüller Interface GmbH & Co. KG**  
 Klingenbergstraße 16  
 D-32758 Detmold  
 Germany  
 Fon: +49 5231 14-0  
 Fax: +49 5231 14-292083  
[www.weidmueller.com](http://www.weidmueller.com)

## Accessories

ZQV 2.5N/6 [2108720000](#) 4050118448504 20 pc(s).  
 RD

### Custom printing



The Dekafix (DEK) marker is the universal marker for all conductor and plug-in connectors as well as for electronic sub-assemblies. The system is ideal for short number sequences and covers a wide range of ready-printed markers.

Strips for fast installation in only one work step. The printing is easy to read, rich in contrast and available in various widths.

- Large range of ready-to-use markers
- Strips for fast installation
- Terminal markers, suitable for all Weidmüller cable connectors
- Available as blank MultiCard or with standard printing

**For custom printing:** Please send us a file of our labeling software M-Print PRO or M-Print PRO Online (without installation) for your labeling specifications.

### General ordering data

Type	Order No.	Version	GTIN (EAN)	Qty.
DEK 5/8 MC SDR	<a href="#">1856750000</a>	Dekafix, Terminal marker, 5 x 8 mm, Pitch in mm (P): 8.00 Weidmueller, To customer specification	4032248400867	160 pc(s).
DEK 5/8 PLUS MC SDR	<a href="#">1046370000</a>	Dekafix, Terminal marker, 5 x 8 mm, Pitch in mm (P): 8.00 Weidmueller, To customer specification	4032248782079	160 pc(s).

**A-series**  
**SET AAP14 10/2.5/10C**

**Weidmüller Interface GmbH & Co. KG**  
Klingenbergstraße 16  
D-32758 Detmold  
Germany  
Fon: +49 5231 14-0  
Fax: +49 5231 14-292083  
www.weidmueller.com

**Accessories****Blank**

The Dekafix (DEK) marker is the universal marker for all conductor and plug-in connectors as well as for electronic sub-assemblies. The system is ideal for short number sequences and covers a wide range of ready-printed markers.

Strips for fast installation in only one work step. The printing is easy to read, rich in contrast and available in various widths.

- Large range of ready-to-use markers
- Strips for fast installation
- Terminal markers, suitable for all Weidmüller cable connectors
- Available as blank MultiCard or with standard printing

**For custom printing:** Please send us a file of our labeling software M-Print PRO or M-Print PRO Online (without installation) for your labeling specifications.

**General ordering data**

Type	Order No.	Version	GTIN (EAN)	Qty.
DEK 5/8 MC	<a href="#">1856740000</a>	Dekafix, Terminal marker,	4032248400850	800 pc(s).
NE WS		5 x 8 mm, Pitch in mm (P):		
		8.00 Weidmueller, White		