



# feather

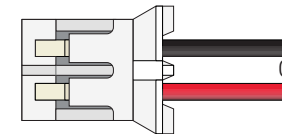
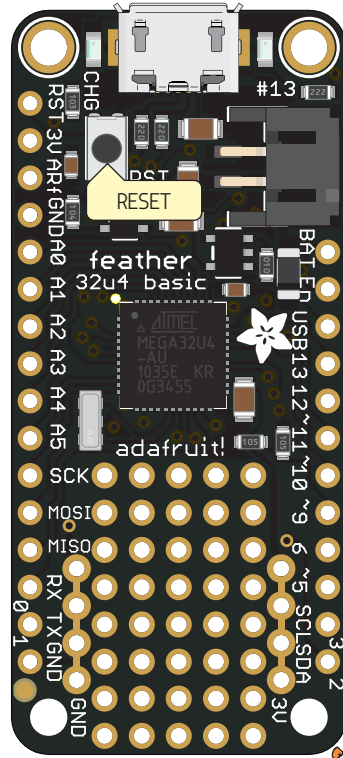
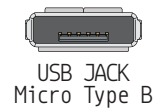
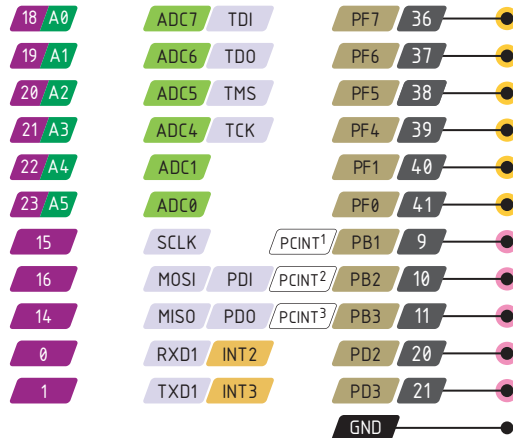
## 32u4 Basic

PINOUT

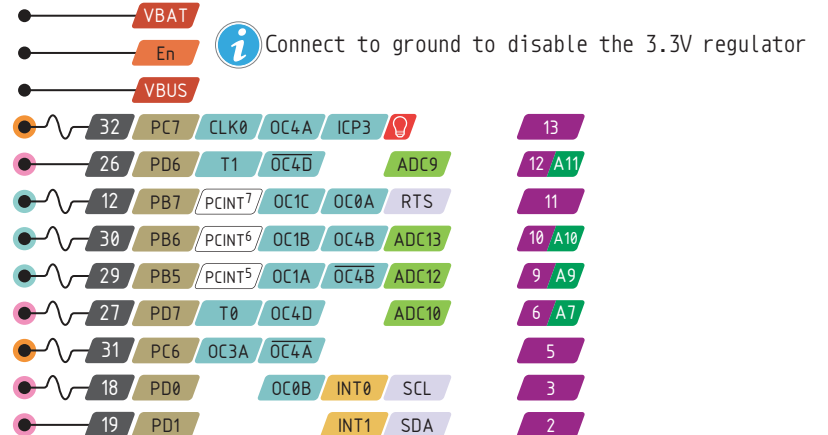
-  Power
-  GND
-  Physical PIN
-  Port PIN
-  Analog PIN
-  Serial PIN
-  PIN Function
-  Interrupt PIN
-  Control PIN

-  PWM Pin
-  Port power group

Can't go higher than 3.3V 



Optional Lipoly Battery



 The total current of each port power group **should not exceed** 100mA

 **Absolute** MAX per pin 20mA, 10mA recommended

 **Absolute** MAX 200mA for the entire package

**VBUS** Connected to 5V USB Port **Absolute** MAX 500mA

**VBAT** It's the positive voltage from to JST Batt jack

**3V3** 3V3 output from regulator **Absolute** MAX 400mA