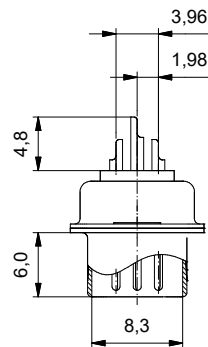
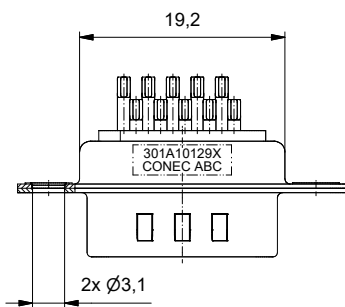
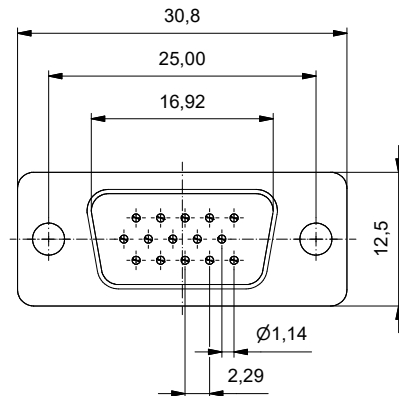


**Technical specification/
Technische Daten:**

Working voltage/ Betriebsspannung:	60 V AC/DC
Insulation resistance/ Isolationswiderstand:	min. 3000 MOhm
Dielectric withstanding voltage/ Spannungsfestigkeit:	1000 V AC / minute
Operating temperature/ Betriebstemperatur:	- 55 °C ... + 105 °C
Current rating/ Strombelastbarkeit:	3 A
Contact Resistance/ Durchgangswiderstand:	max. 15 mOhm

**Materials/
Werkstoffe:**

Contact/ Kontakt:	Cu alloy, Underplate/ 50 µin Nickel Beschichtung: Contact area/ Kontaktbereich:	Gold flash
	Solder tails area/ Lötbereich:	Gold flash
Shell/ Gehäuse:	Steel, Nickel plated	
Rivet, Boardlock/ Befestigungsniet:	Copper alloy	
Insulator/ Isolierkörper:	Thermal plastic UL 94 V-0	



Part no. / Part marked/
Art.-Nr. / Bedruckung:
301A10129X

general tolerance/ Allgemeintoleranz: 0, ±0.5 ,0 ±0.3 ,00 ±0.2	Scale/Maßstab: 2:1		dim. in mm		D-SUB HD Male 15pos. solder cup stamped contacts D-SUB HD Stiftleiste 15pol. Lötkelch gestanzte Kontakte	dwg no / Z.-nr.: 16K1A1570	DIN- A3
			Date/Datum: 04.07.2022 Name: Bub	appd./ gepr.: 22.08.2022 Name: Lehmenkühler			
Index: a Original							1 / 1

The reproduction, distribution and sale of this document as well as the communication of its contents to others without express authorization is prohibited. Offenders will be held liable for the payment of damages. We reserve the right to withdraw from circulation and/or to destroy copies of unauthorized publications. We reserve the right to make technical changes without notice.