

Product Data Sheet

DIN 41612 Female straight, type B,
Part No. 302-40064-02TH

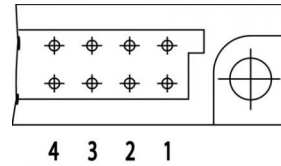
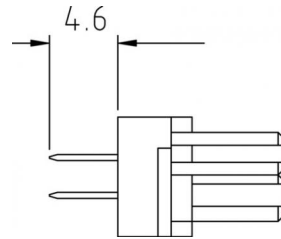
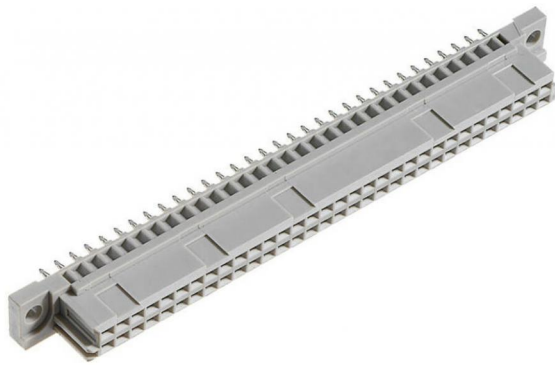


Illustration similar



Parallel



Perpendicular



Through Hole



Rugged

- Termination length 4.6 mm
- 64 contacts
- THTR
- performance level 2



» to product on www.ept.de



» to product group DIN 41612

Product Data Sheet

DIN 41612 Female straight, type B,
Part No. 302-40064-02TH



Technical Specifications

Basics

| | |
|-----------------------------|-------------------------|
| Specification | IEC 60603-2 (DIN 41612) |
| Performance Level | 2 |
| No. of Contacts | 64 |
| Termination Technology | THTR |
| Termination Length | 4.6 mm |
| Board-to-Board Distance | 16.85 mm |
| Operating Temperature Range | -55°C to +125°C |

Material

| | |
|-------------------------------|---------------------------|
| Insulator Material | PA glass filled UL 94 V-0 |
| CTI value <i>IEC 60112</i> | 600 |
| Contact Material | Copper alloy |

Mechanical

| | |
|--------------------------|-------------------|
| Pitch | 2.54 mm |
| Mating Force | < 60 N |
| Separating Force per Pin | > 0.15 N |
| Durability | 400 mating cycles |

Electrical

| | |
|------------------------|---------------------|
| Operational Current | 1.5 A |
| Contact Resistance | <20 mΩ |
| Clearance and Creepage | ≥ 1.2 mm |
| Insulation Resistance | >10 ⁶ MΩ |
| Test Voltage | 1000 V |

Processing

| | |
|-----------------------|---------------------|
| Soldering Temperature | 260°C per J-STD-020 |
| MSL | 1 |

Approval / Compliance

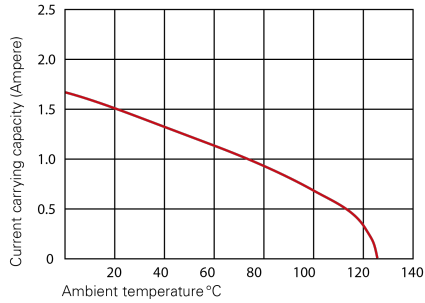
| | |
|-------------|----------------|
| UL file | E130314 |
| Environment | RoHS compliant |

Product Data Sheet

DIN 41612 Female straight, type B,
Part No. 302-40064-02TH



Derating Diagram



Type B, Q, C, R

| | |
|-------|-------|
| 20°C | 1.5 A |
| 70°C | 1.1 A |
| 100°C | 0.7 A |

Product Data Sheet

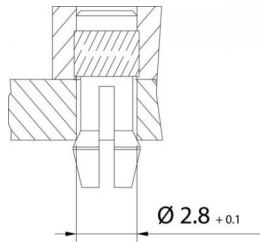
DIN 41612 Female straight, type B,
Part No. 302-40064-02TH



Options

Board Lock

Suitable for connectors with type B, C, D, E, F low profile, G low profile, M female connectors and R male connectors



| | Forces | | | Part Number | PCB Thickness |
|-------------------|--------|--------------------|----------------|----------------------|---------------|
| Type of Insertion | F_m | not soldered F_h | soldered F_h | 302-40064-02THC 1 | 1.6 mm |
| Locked | < 20 N | > 10 N | > 25 N | 302-40064-02THC 2 | 2.4 mm |
| Under Tension | < 20 N | > 5 N | > 25 N | 302-40064-02THC 3 | 3.6 mm |

Modifications

Available on request

- Without flange
- Special contact length
- Performance levels I + III or customer-specific
- Contact arrangement

Accessories

» DIN 41612 Coding type B and C
Part Number 104-19003

Product Data Sheet

DIN 41612 Female straight, type B,
Part No. 302-40064-02TH



Drawings

Component data in 2D and 3D format you can download here:

[» PDF](#)