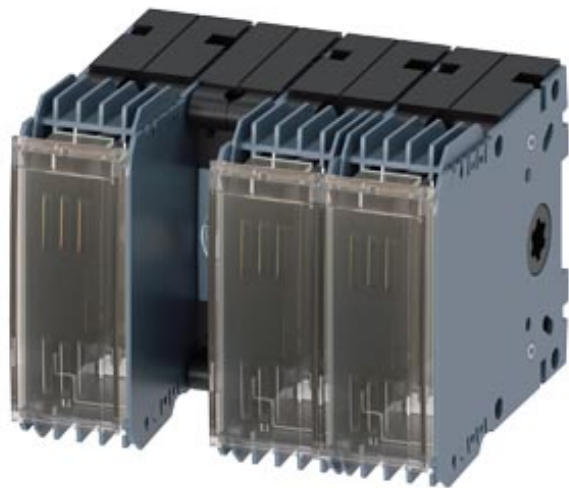


Switch disconnecter with fuse 32 A, Size 1, 3-pole for LV HRC fuse  
Sz. 000 Front operating mechanism center Basic unit without handle  
flat terminal on the rear



Model	
Product brand name	SETRON
Product designation	Switching device
Design of the product	3KF switch disconnecter with fuses
Design of the operating mechanism	without
Design of handle	Without
Direction of actuation	from the front
Type of the driving mechanism / motor drive	No
Number of poles	3
Size of disconnecting link	00 and 000
Size of switch disconnecter	1
Size of fuse link	NH000, NH00
Electrical endurance (switching cycles)	
• at AC-23 A / at 440 V / at 50/60 Hz	10 000
• at AC-23 A / at 690 V / at 50/60 Hz	6 000
• at DC-23 A / at 440 V	1 500
I2t value	
• with closed switch / for combination switch + fuse / at 500 V / maximum	33 200 A²·s

<ul style="list-style-type: none"> <li>• with closed switch / for combination switch + fuse / at 400 V / maximum</li> </ul>	33 200 A <sup>2</sup> ·s
<ul style="list-style-type: none"> <li>• with closed switch / at 690 V / for combination switch + gG fuse / maximum</li> </ul>	40 700 A <sup>2</sup> ·s
<ul style="list-style-type: none"> <li>• of the fuse / at 500 V / maximum permissible</li> </ul>	34 000 A <sup>2</sup> ·s
<ul style="list-style-type: none"> <li>• of the gG fuse / at 690 V / maximum permissible</li> </ul>	55 000 A <sup>2</sup> ·s
<ul style="list-style-type: none"> <li>• of the aM fuse / at 690 V / maximum permissible</li> </ul>	55 000 A <sup>2</sup> ·s
Mechanical service life (switching cycles) / typical	15 000
Position / of the switch operating mechanism	after the first pole
Fuse system	LV HRC fuse
Overvoltage category	IV
Operating voltage / with current paths in series	
<ul style="list-style-type: none"> <li>• with degree of pollution 2 / at DC / rated value / Note</li> </ul>	440 / 3
<ul style="list-style-type: none"> <li>• with degree of pollution 3 / at DC / rated value / Note</li> </ul>	440 / 3
Insulation voltage / rated value	1 000 V
Surge voltage resistance / rated value	12 kV
Overvoltage in percent / relative to the operating voltage / at AC / at 50/60 Hz	10 %

#### Protection class

Protection class IP	IP00
Protection class IP	
<ul style="list-style-type: none"> <li>• with closed switch / with cover or cable lug cover</li> </ul>	IP20
<ul style="list-style-type: none"> <li>• on the front</li> </ul>	IP20

#### Dissipation

Power loss [W]	
<ul style="list-style-type: none"> <li>• with conventional rated thermal current / per pole</li> </ul>	0.4 W
<ul style="list-style-type: none"> <li>• with conventional rated thermal current / per device</li> </ul>	1.2 W
<ul style="list-style-type: none"> <li>• with conventional rated thermal current / without fuse / per pole</li> </ul>	0.4 W
<ul style="list-style-type: none"> <li>• with conventional rated thermal current / without fuse / per device</li> </ul>	1.2 W
<ul style="list-style-type: none"> <li>• for rated value of the current / at AC / in hot operating state / per pole</li> </ul>	0.4 W
<ul style="list-style-type: none"> <li>• of the fuse / per fuse / maximum</li> </ul>	6.5 W
Operating current	
<ul style="list-style-type: none"> <li>• at AC-21 A / at 400 V / maximum</li> </ul>	32 A

• at AC-21 A / at 500 V / maximum	32 A
• at AC-21 A / at 690 V / maximum	32 A
• at AC-23 A / at 500 V / at 50/60 Hz / rated value / maximum	32 A
• at AC-22 A / at 500 V / at 50/60 Hz / rated value / maximum	32 A
• at AC-22 A / at 400 V / at 50/60 Hz / rated value / maximum	32 A
• at AC-22 A / at 690 V / at 50/60 Hz / rated value / maximum	32 A
• at AC-23 A / at 400 V / at 50/60 Hz / rated value / maximum	32 A
• at AC-23 A / at 690 V / at 50/60 Hz / rated value / maximum	32 A
• at DC-23 A / at 440 V / rated value / maximum	32 A
• at DC-23 A / at 220 V / rated value / maximum	32 A
• at DC-22 A / at 440 V / rated value / maximum	32 A
• at DC-22 A / at 220 V / rated value / maximum	32 A
• at DC-21 A / at 440 V / rated value / maximum	32 A
• at DC-21 A / at 220 V / maximum	32 A
Continuous current	
• rated value	32 A
• at 40 °C / rated value	32 A
• at 45 °C / rated value	32 A
• at 50 °C / rated value	32 A
• at 55 °C / rated value	32 A
• at 60 °C / rated value	32 A
• at 65 °C / rated value	32 A
• at 70 °C / rated value	32 A
Continuous current / at DC / rated value	32 A
Let-through current / of the fuse / at 500 V / maximum permissible	11 800 A
Let-through current / of the gG fuse / at 690 V / maximum permissible	11 500 A
Let-through current / of the aM fuse / at 690 V / maximum permissible	11 500 A
Let-through current / with closed switch	
• at 690 V / for combination switch + aM fuse / maximum permissible	11 200 A
• at 690 V / for combination switch + gG fuse / maximum permissible	11 200 A
• for combination switch + fuse / at 400 V / maximum permissible	10 400 A

• for combination switch + fuse / at 500 V / maximum permissible	10 400 A
Short-time current resistance (I <sub>cw</sub> ) / at 690 V AC/440 V DC / limited to 1 s / rated value	2.5 kA

#### Main circuit

Operating power / at AC-23 A	
• at 400 V / at 50/60 Hz / rated value	15 kW
• at 500 V / at 50/60 Hz / rated value	18.5 kW
• at 690 V / at 50/60 Hz / rated value	30 kW
Operating voltage	
• at AC / at 50/60 Hz / rated value	690 V
• at AC / rated value / maximum	690 V

#### Auxiliary circuit

Number of connected NC contacts / for auxiliary contacts	0
Number of connected NO contacts / for auxiliary contacts	0
Number of connected CO contacts / for auxiliary contacts	0
Number of CO contacts / for auxiliary contacts	4
Number of NC contacts / for auxiliary contacts	0
Number of NO contacts / for auxiliary contacts	0
<b>Suitability for use</b>	
• Main switch	Yes
• switch disconnecter	Yes
• EMERGENCY OFF switch	Yes
• safety switch	Yes
• maintenance/repair switch	Yes
Product feature / interlock	No
Product component	
• Phase failure monitoring	No
• Voltage trigger	No
• undervoltage release	No
• undervoltage release with leading contact	No
Product feature / sealable	Yes
Product extension	
• Auxiliary switch	Yes
• optional	
— locking capability	Yes
— motor drive	No
— fuse monitoring	Yes
Product function	

- fuse monitoring
- Overvoltage protection monitoring

No

No

## Short circuit

Short-circuit current making capacity (I<sub>cm</sub>) / for switch disconnecter / at 690 V AC/440 V DC / without fuse link / rated value / minimum

3.55 kA

## Connections

Arrangement of electrical connectors / for main current circuit

Rear

Tightening torque / with screw-type terminals

- minimum
- maximum

15 N·m

22 N·m

- Type of connectable conductor cross-sections / for aluminum conductor / stranded / with lug

1x (1 ... 35 mm<sup>2</sup>)

- Type of connectable conductor cross-sections / for copper conductor / stranded / with lug / acc. to DIN 46234

1x (1 ... 35 mm<sup>2</sup>)

- Type of connectable conductor cross-sections / for copper conductor / stranded / with lug / acc. to DIN 46235

1x (1 ... 35 mm<sup>2</sup>)

**Type of electrical connection**

- for main current circuit

flat connector

## Mechanical Design

Height

104 mm

Width

144.5 mm

Depth

145.5 mm

Mounting position

any

Mounting type

Floor mounting and snap-on mounting on 35 mm standard mounting rail

Mounting type

- front mounting with 4-hole attachment
- front mounting with central attachment
- rail mounting

No

No

Yes

Net weight

1 200 g

## Environmental conditions

Degree of pollution

3

Ambient temperature

- during operation / minimum
- during operation / maximum
- during storage / minimum
- during storage / maximum

-25 °C

70 °C

-50 °C

80 °C

## Certificates

Reference code	
• acc. to DIN EN 61346-2	Q
• acc. to DIN EN 81346-2	Q
<b>General Product Approval</b>	<b>other</b>



CCC

[Miscellaneous](#)

[Miscellaneous](#)

#### Further information

**Information- and Downloadcenter (Catalogs, Brochures,...)**

<http://www.siemens.com/lowvoltage/catalogs>

**Industry Mall (Online ordering system)**

<https://mall.industry.siemens.com/mall/en/en/Catalog/product?mlfb=3KF1303-0MR11>

**Service&Support (Manuals, Certificates, Characteristics, FAQs,...)**

<https://support.industry.siemens.com/cs/ww/en/ps/3KF1303-0MR11>

**Image database (product images, 2D dimension drawings, 3D models, device circuit diagrams, ...)**

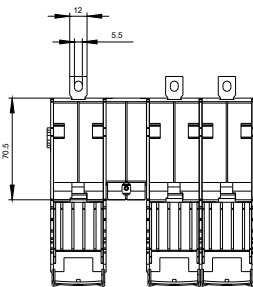
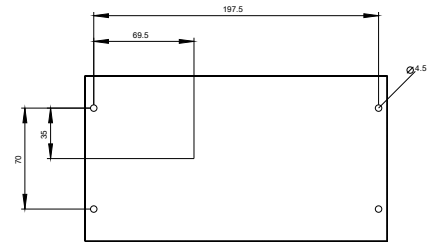
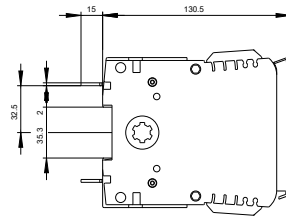
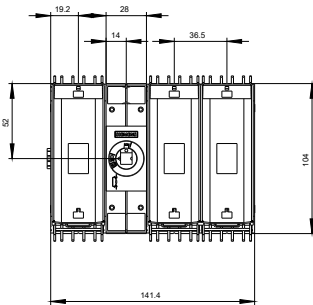
[http://www.automation.siemens.com/bilddb/cax\\_en.aspx?mlfb=3KF1303-0MR11](http://www.automation.siemens.com/bilddb/cax_en.aspx?mlfb=3KF1303-0MR11)

**CAX-Online-Generator**

<http://www.siemens.com/cax>

**Tender specifications**

<http://www.siemens.com/specifications>



U

