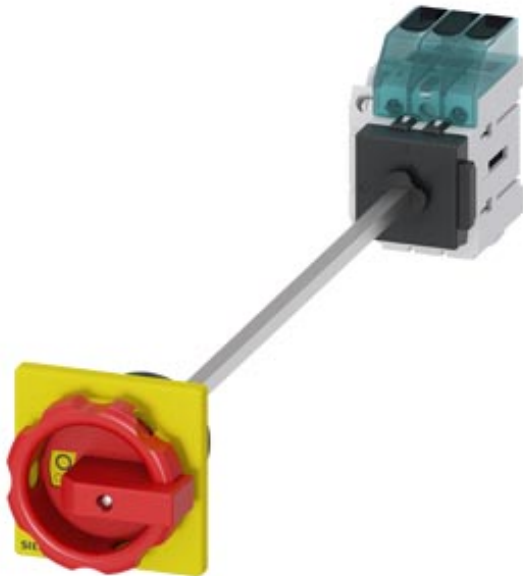


Load disconnecter 3LD3, Iu 63 A Main switch 3-pole Rated operating capacity at AC-23 A at 400V 22.0 kW floor mounting Basic switch with door coupling Central hole mounting 22.5mm Rotary actuator red / yellow 66 x 66 mm with auxiliary switch 1OE + 1S



Model	
Product brand name	SENTRON
Product designation	3LD Switch disconnecter
Design of the product	EMERGENCY-STOP switch
Display version / for switch position indicator manual operation	1 ON - 0 OFF
Design of the operating mechanism	Short rotary knob
Design of handle	rotary operating mechanism, red/yellow
Type of the driving mechanism / motor drive	No
General technical data	
Number of poles	3
Number of poles / Note	3
Type of device	fixed mounting
Type of switch	Floor mounting with door coupling
Operating frequency / maximum	50 1/h
Voltage	
Insulation voltage / rated value	690 V
Surge voltage resistance / rated value	6 kV

Protection class	
Protection class IP	IP65
Protection class IP / on the front	IP65
Dissipation	
Power loss [W] / for rated value of the current / at AC / in hot operating state / per pole	4.5 W
Electricity	
Current / at AC / rated value	63 A
Continuous current / rated value	63 A
Continuous current / of upstream fuse / rated value	63 A
Short-time current resistance (I <sub>cw</sub> ) / at 690 V / limited to 1 s / rated value	1 000 A
Main circuit	
Operating frequency	
• initial value	50 Hz
• Full-scale value	60 Hz
Operating power	
• at AC-23 A / at 400 V / rated value	22 kW
• at AC-23 A / at 690 V / rated value	18.5 kW
• at AC-3 / at 400 V / rated value	18.5 kW
• at AC-3 / at 690 V / rated value	15 kW
Operating voltage	
• at AC / at 50/60 Hz / rated value	690 V
Auxiliary circuit	
Number of CO contacts / for auxiliary contacts	0
Number of NC contacts / for auxiliary contacts	1
Number of NO contacts / for auxiliary contacts	1
Operating voltage / of auxiliary contacts / at AC / maximum	500 V
Continuous current / of the auxiliary contact / rated value	10 A
Insulation voltage / of the auxiliary switch / rated value	500 V
Suitability	
<b>Suitability for use</b>	
• Main switch	Yes
• switch disconnecter	Yes
• EMERGENCY OFF switch	Yes
• safety switch	Yes
• maintenance/repair switch	Yes
Product details	

Product feature / interlock	Yes
Number of bracket locks / maximum	2
Hasp thickness / of bracket locks / minimum	4 mm
Hasp thickness / of bracket locks / maximum	6 mm
Product extension / optional	
• motor drive	No
• Voltage trigger	No

### Short circuit

Conditional short-circuit current / with line-side fuse protection	
• at 690 V / by gG fuse / rated value	6 kA
Number of NC contacts	1
Number of NO contacts	1

### Connections

<b>Type of connectable conductor cross-sections</b>	
• for copper conductor / solid	1x (2.5 to 16 mm <sup>2</sup> )
• for copper conductor / stranded	1x (2.5 to 16 mm <sup>2</sup> )
• for auxiliary contacts / solid	2x (0.75 ... 2.5 mm <sup>2</sup> ), 1x 4 mm <sup>2</sup>
• for auxiliary contacts / finely stranded / with core end processing	2x (0.75 ... 1.5 mm <sup>2</sup> ), 1x 2.5 mm <sup>2</sup>
• for auxiliary contacts / stranded	2x (0.75 ... 2.5 mm <sup>2</sup> ), 1x 4 mm <sup>2</sup>
<b>Type of electrical connection</b>	
• for main current circuit	box terminal
• for auxiliary contacts	Box terminals

### Requirements

Design of the fuse link	
• for short-circuit protection of the main circuit / required	fuse gL/gG: 63 A
• for short-circuit protection of the auxiliary switch / required	fuse gL/gG: 10 A

### Mechanical Design

Height	60 mm
Width	47 mm
Depth	380 mm
Mounting type	Built-in unit fixed-mounted version
Mounting type	
• front mounting with 4-hole attachment	No
• front mounting with central attachment	Yes
• rail mounting	Yes
Net weight	300 g

### Environmental conditions

Ambient temperature	
<ul style="list-style-type: none"> <li>during operation / minimum</li> </ul>	-25 °C
<ul style="list-style-type: none"> <li>during operation / maximum</li> </ul>	55 °C

### Certificates

Reference code	
<ul style="list-style-type: none"> <li>acc. to DIN EN 61346-2</li> </ul>	S
<ul style="list-style-type: none"> <li>acc. to DIN EN 81346-2</li> </ul>	SF

<b>General Product Approval</b>	<b>Declaration of Conformity</b>
---------------------------------	----------------------------------



### Further information

**Information- and Downloadcenter (Catalogs, Brochures,...)**

<http://www.siemens.com/lowvoltage/catalogs>

**Industry Mall (Online ordering system)**

<https://mall.industry.siemens.com/mall/en/en/Catalog/product?mlfb=3LD3448-1TK53>

**Service&Support (Manuals, Certificates, Characteristics, FAQs,...)**

<https://support.industry.siemens.com/cs/ww/en/ps/3LD3448-1TK53>

**Image database (product images, 2D dimension drawings, 3D models, device circuit diagrams, ...)**

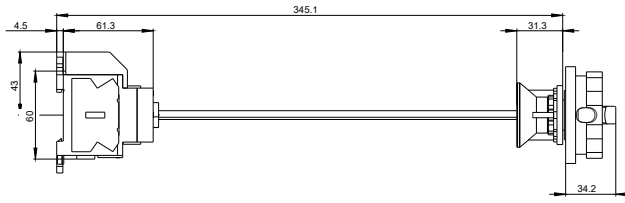
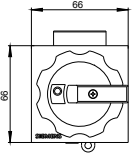
[http://www.automation.siemens.com/bilddb/cax\\_en.aspx?mlfb=3LD3448-1TK53](http://www.automation.siemens.com/bilddb/cax_en.aspx?mlfb=3LD3448-1TK53)

**CAX-Online-Generator**

<http://www.siemens.com/cax>

**Tender specifications**

<http://www.siemens.com/specifications>



Tueri/ Door/ Porte  
Puerta/ Porta/ Porta



Boden/ Base/ Plancher/  
Base/ Pavimento/ Fundo

