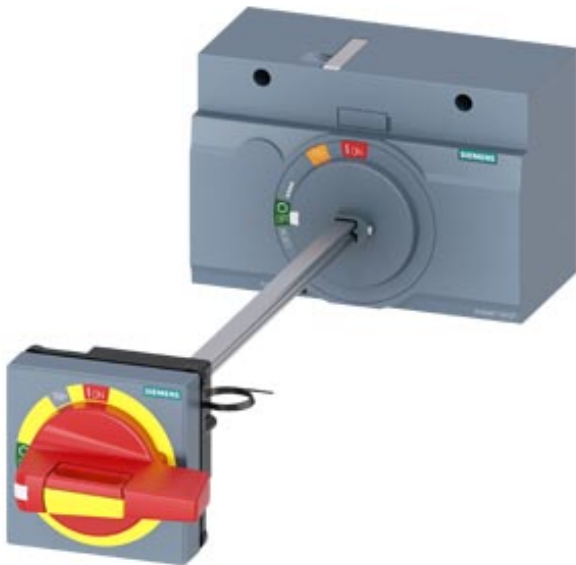






door mounted rotary operator emergency-off IEC IP65 with door interlock 24V DC lighting kit accessory for: 3VA1 400/630 3VA2 400/630



Model	
Product brand name	SETRON
Product designation	Accessories
Product version	Door-coupling rotary operating mechanism
Accessories	DOOR-COUPLING ROTARY OPERATING MECHANISM
General technical data	
Protection class IP	IP65
Mechanical Design	
Height	94 mm
Width	138 mm
Net weight	706 g
Certificates	

General Product Approval	EMC	Declaration of Conformity	Shipping Approval	other
<a href="#">Miscellaneous</a> 	 RCM	 EG-Konf.	 LRS	<a href="#">Manufacturer Declaration</a>

other
<a href="#">Miscellaneous</a>

### Further information

**Information- and Downloadcenter (Catalogs, Brochures,...)**

<http://www.siemens.com/lowvoltage/catalogs>

**Industry Mall (Online ordering system)**

<https://mall.industry.siemens.com/mall/en/en/Catalog/product?mlfb=3VA9467-0FK27>

**Service&Support (Manuals, Certificates, Characteristics, FAQs,...)**

<https://support.industry.siemens.com/cs/ww/en/ps/3VA9467-0FK27>

**Image database (product images, 2D dimension drawings, 3D models, device circuit diagrams, ...)**

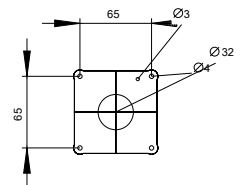
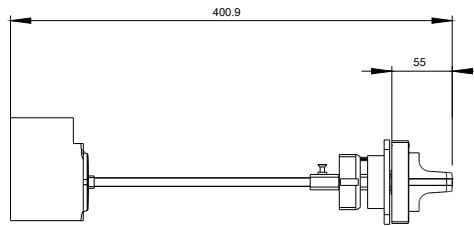
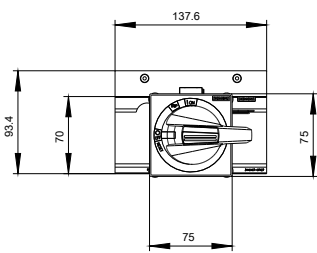
[http://www.automation.siemens.com/bilddb/cax\\_en.aspx?mlfb=3VA9467-0FK27](http://www.automation.siemens.com/bilddb/cax_en.aspx?mlfb=3VA9467-0FK27)

**CAX-Online-Generator**

<http://www.siemens.com/cax>

**Tender specifications**

<http://www.siemens.com/specifications>



**last modified:**

02/28/2019