

PLEASE CHECK WWW.MOLEX.COM FOR LATEST PART INFORMATION

Part Number:

0436500216

Status:

Active

Overview:

Micro-Fit Connector System

Description:

Micro-Fit 3.0 Vertical Header, 3.00mm Pitch, Single Row, 2 Circuits, with PCB Polarizing Peg, Gold, Glow-Wire Capable, Black

Documents:

- Drawing (PDF)

3D Model

Product Specification PS-43650 (PDF)

Packaging Specification PK-70873-0811-001 (PDF)

Test Summary TS-43045-001-001 (PDF)
- Test Summary TS-43045-002-001 (PDF)

Test Summary TS-46235-001-001 (PDF)

RoHS Certificate of Compliance (PDF)

Product Literature (PDF)

Agency Certification

CSA

UL

LR19980

E29179

General

Product Family

Series

3D Viewer

Application

CURRENT-MAX-NUMERIC

Comments

PCB Headers

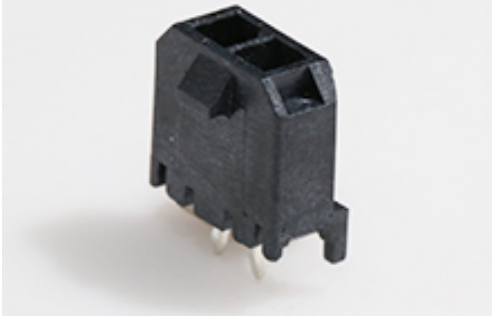
43650

Yes

Power, Wire-to-Board

8.5

High Temperature|Square Pin|Offset Through Hole Mounting|Solder Type<P><P>This Molex product is manufactured from material that has the following ratings, tested by independent agencies:. a) A Glow Wire Ignition Temperature (GWIT) of at least 775 deg C per IEC 60695-2-13.. b) A Glow Wire Flammability Index (GWFI) above 850 deg C per IEC 60695-2-12.and hence complies with the requirements set out in the International Standard IEC 60335-1 5th edition - household and similar electrical appliances - safety, section 30 Resistance to heat and fire. <P><P> The customers using this product must determine its suitability for use in their particular application through testing or other acceptable means as described in end-product glow-wire flammability test standard IEC 60695-2-11 and any applicable product end-use standard(s). <P> If it is determined during the customer's evaluation of suitability, that higher performance is required, please contact Molex for possible product options. High Temperature|Square Pin|Offset Through Hole Mounting|Solder Type<P><P>This Molex product is manufactured from material that has the following ratings, tested by independent agencies:. a) A Glow Wire Ignition Temperature (GWIT) of at least 775 deg C per IEC 60695-2-13.. b) A Glow Wire Flammability Index (GWFI) above 850 deg C per IEC 60695-2-12.and hence complies with the requirements set out in the International Standard IEC 60335-1 5th edition - household and similar electrical appliances - safety, section 30 Resistance to heat and fire. <P><P> The customers using this product must determine its suitability for use in their particular application through testing or other acceptable means as described in



Series image - Reference only

EU ELV

Not Relevant

EU RoHS

Compliant

REACH SVHC

Not Contained Per
-ED/88/2018 (15
January 2019)

Halogen-Free

Status

Low-Halogen

For more information, please visit [Contact US](#)

China RoHS

China ROHS

ELV

RoHS Phthalates

Green Image

Not Relevant

Not Contained

Search Parts in this Series

43650 Series

Mates With

Micro-Fit 3.0 Receptacle Housing [43645](#)

Micro-Fit 3.0 TPA Receptacle Housing
[171850](#)

Overview	end-product glow-wire flammability test standard IEC 60695-2-11 and any applicable product end-use standard(s). <P> If it is determined during the customer's evaluation of suitability, that higher performance is required, please contact Molex for possible product options. """"""""
PITCH-MATING-NUMERIC	<u>Micro-Fit Connector System</u>
Product Literature Order No	3.00
Product Name	987650-5984
UPC	Micro-Fit 3.0
	800753853232
Physical	
Breakaway	No
Circuits (Loaded)	2
Circuits (maximum)	2
Color - Resin	Black
Durability (mating cycles max)	30
Flammability	94V-0
Glow-Wire Capable	Yes
Mated Height	17.27mm
Material - Metal	Brass
Material - Plating Mating	Gold
Material - Plating Termination	Tin
Material - Resin	High Temperature Thermoplastic
Net Weight	0.459/g
Number of Rows	1
Orientation	Vertical
PCB Locator	Yes
PCB Retention	Yes
PCB Thickness - Recommended	1.60mm
Packaging Type	Tray
Pitch - Mating Interface	3.00mm
Plating min - Mating	0.381µm
Plating min - Termination	2.540µm
Polarized to PCB	Yes
Shrouded	Fully
Stackable	No
Surface Mount Compatible (SMC)	Yes
Temperature Range - Operating	-40° to +105°C
Termination Interface: Style	Through Hole - Kinked Pin
Electrical	
Current - Maximum per Contact	8.5A
Voltage - Maximum	600V
Solder Process Data	
Duration at Max. Process Temperature (seconds)	030
Lead-freeProcess Capability	SMC&WAVE
Max. Cycles at Max. Process Temperature	003
Process Temperature max. C	260
Material Info	
Reference - Drawing Numbers	
Packaging Specification	PK-70873-0811-001
Product Specification	PS-43650
Sales Drawing	SD-43650-006
Symbol/Footprint Data	SYM-43650-0215
Test Summary	TS-43045-001-001, TS-43045-002-001, TS-46235-001-001

This document was generated on 07/29/2019

PLEASE CHECK WWW.MOLEX.COM FOR LATEST PART INFORMATION