

## Features

- **XLR CONNECTOR**
- **MALE**
- **CABLE MOUNT**
- **STRAIGHT BODY ORIENTATION**

## RS PRO Cable Mount XLR Connector

RS Stock No.: 458-018



RS Professionally Approved Products bring to you professional quality parts across all product categories. Our product range has been tested by engineers and provides a comparable quality to the leading brands without paying a premium price.

## Product Description

- *RS Pro Cable Mount Connectors with Backshell*
- *From RS Pro, these Multipole audio/video connectors are manufactured for professional use. The "AXR"/"XLR" compatible connectors are precision made with zinc diecast bodies and silver-plated, solid brass turned contacts. Wiring and assembly are also simple operations and a collet arrangement can accommodate cable diameters ranging from 2.8 mm to 8.0 mm to provide an effective cable grip. All models are highly reliable and excellent quality.*
- *RS XLR Connectors*
- *Straight body orientation*
- *Cable mounting*
- *Cable mounting plugs and sockets with plastic backshells. Incorporated are an anti-vibration collar and are inter-mateable with the standard and universal chassis mount plugs and sockets.*

## General Specifications

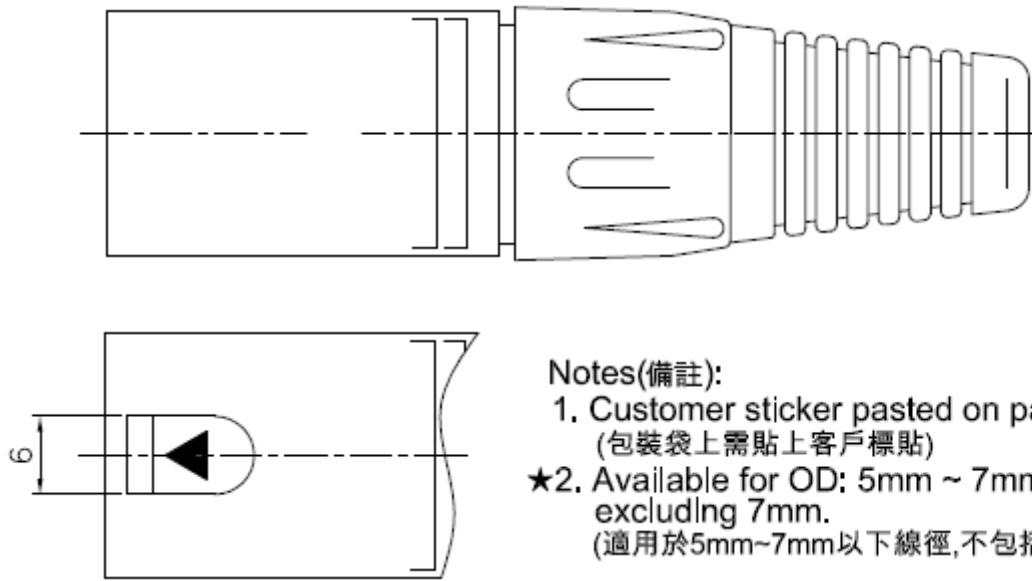
STYLE	Cable Mount XLR Connector
GENDER	MALE
PIN	Silver plated 5 pins
BODY ORIENTATION	Straight
MOUNTING TYPE	Cable Mount
TERMINATION METHOD	Solder
HOUSING MATERIAL	Zinc with electrophoresis black plated

## Electrical Specifications

CONTACT RESISTANCE	MEASURED AT SMALL CURRENT (1 A OR LESS) 1000Hz	<5mΩ
INSULATION RESISTANCE	APPLY A VOLTAGE OF 500V DC FOR 1 MIN TO FOLLOWING PORTIONS AFTER WHICH MEASUREMENT SHALL BE MADE: (1) BETWEEN BODY AND CONDUCTOR (2) BETWEEN CONDUCTORS NOT TO BE CONTACT (3) BETWEEN CONDUCTORS NOT TO BE WHEN PLUG IS INSERTED DC 250V 1 MIN	≥5000MΩ
DIELECTRIC STRENGTH	WHEN HAS THE INSULATION COMPONENTS TEST	1500V@60S
NORMAL TYPE	RATED CURRENT/ VOLTAGE	10A/125VAC

## Similar Products

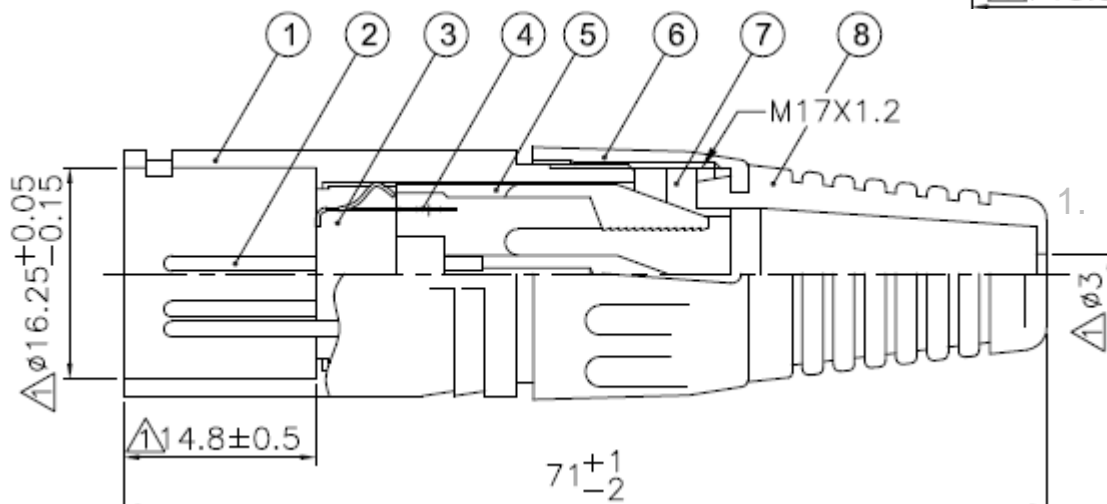
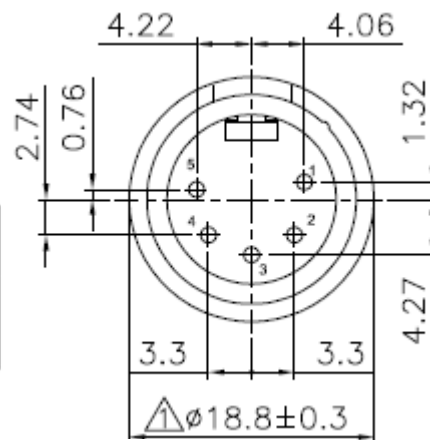
Stock No.	Brand	Attribute 1	Attribute 2	Attribute 3
457-904	RS PRO	XLR CONNECTOR	MALE CONNECTOR	3 PIN XLR CONNECTOR
455-122	RS PRO	XLR CONNECTOR	MALE CONNECTOR	3 PIN XLR CONNECTOR
457-960	RS PRO	XLR CONNECTOR	MALE CONNECTOR	3 PIN XLR CONNECTOR
457-875	RS PRO	XLR CONNECTOR	MALE CONNECTOR	3 PIN XLR CONNECTOR
457-998	RS PRO	XLR CONNECTOR	MALE CONNECTOR	3 PIN XLR CONNECTOR
457-908	RS PRO	XLR CONNECTOR	MALE CONNECTOR	4 PIN XLR CONNECTOR
457-869	RS PRO	XLR CONNECTOR	MALE CONNECTOR	4 PIN XLR CONNECTOR
457-982	RS PRO	XLR CONNECTOR	MALE CONNECTOR	4 PIN XLR CONNECTOR
457-986	RS PRO	XLR CONNECTOR	MALE CONNECTOR	5 PIN XLR CONNECTOR
457-897	RS PRO	XLR CONNECTOR	MALE CONNECTOR	5 PIN XLR CONNECTOR
457-914	RS PRO	XLR CONNECTOR	MALE CONNECTOR	5 PIN XLR CONNECTOR



#### Notes(備註):

1. Customer sticker pasted on packaging  
(包裝袋上需貼上客戶標貼)
- ★2. Available for OD: 5mm ~ 7mm(below) cable,  
excluding 7mm.  
(適用於5mm~7mm以下線徑,不包括7mm)

RS Item No. (客戶品號)	Shell plating (鍍殼電鍍)	Pin plating (插針電鍍)
458018	Electrophoretic black (電泳黑)	Silver 0.5μm (鍍銀)



8	膠套(BOOT)	PVC	黑色(BLACK)	1
7	T型環(T-RING)	POM	黑色(BLACK)	1
6	螺套(CAP)	PA	黑色(BLACK)	1
5	夾線爪(CHUCK)	POM	鍍銀(SILVER)	1
4	端子(TERMINAL)	H62	鍍銀(SILVER)	1
3	絕緣(INSULATOR)	PA	黑色(BLACK)	1
2	插針(PIN)	H59-1	鍍銀(SILVER)	5
1	針殼 (DIE-CAST SHELL)	ZZnAl4-0	see list	1
NO.	DESCRIPTION	MATERIAL	FINISH	QTY