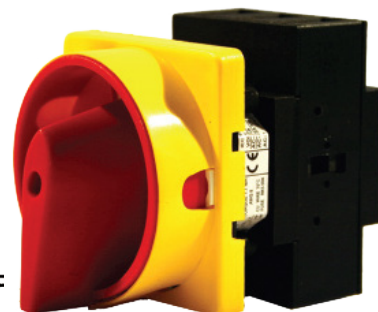


RS Part Number: 466-150 Specifications and dimensions



- Back of door mounting load break switch
- Red/Yellow handle padlockable

Dimensions	
Back of panel switch:	
Height	87 mm
Width	68 mm
Depth	56 mm
Handle:	
Height	64 mm
Width	64 mm
Depth	42 mm
Weight	0.265 Kg
Features	
Rated operational voltage Ue IEC &EN	690 V
Rated operational voltage Ue UL	600 V
Rated impulse withstand voltage Uimp	6 kV
Rated uninterrupted current Iu	32 A
Rated operational current Ie AC22A	32 A
Rated operational current Ie AC21A	40 A
Rated operational current Ie AC1	40 A
Rated operational power AC23A (50/60Hz) 230V	15 kW
Rated operational power AC23A (50/60Hz) 415V	18.5 kW
Rated operational power AC23A (50/60Hz) 690V	22 kW
Rated operational power AC3 (50/60Hz) 230V	11 kW
Rated operational power AC3 (50/60Hz) 415V	11 kW
Rated operational power AC3 (50/60Hz) 690V	15 kW
UL power rating 3 phase DOL 110V	3 hp
UL power rating 3 phase DOL 230V	7.5 hp
UL power rating 3 phase DOL 480V	20 hp
UL power rating 3 phase DOL 600V	25 hp
UL power rating 1 phase DOL 110V	2 hp
UL power rating 1 phase DOL 230V	3 hp
UL short circuit fuse rating class J	45 A
UL rated fused short circuit current	10 kA
IEC short circuit capacity max fuse size GI	32 A
IEC rated fused short circuit current	30 kA
Maximum terminal capacity	10 mm ²
Recommended tightening torque	1.7 Nm
Related Products	
Extended main pole + 1NC/1NO auxilliary	136-5280
Main pole contact	136-5281
Gasket to provide IP65 rating	773-7995