

FEATURES

- Smooth plastic construction
- Secures and protects cables and wire
- Offers a degree of vibration resistance

RS PRO Black PVC 12.5mm Round Cable Grommet for Maximum of 9.5mm Cable Dia.

RS Stock No.: 543-210



RS Professionally Approved Products bring to you professional quality parts across all product categories. Our product range has been tested by engineers and provides a comparable quality to the leading brands without paying a premium price.

Product Description

From the trusted RS PRO brand, this cable grommet is ideal for smoothing boreholes for cable feed-through. The open grommet is designed to snap neatly and quickly into position. Made from PVC material, the grommet has an advantage over rubber grommets in that it improves friction, allowing for smoother cabling.

543-197 - 4.0 mm
543-204 - 6.4 mm
543-210 - 9.5 mm
605-649 - 16 mm
605-655 - 18.5 mm

General Specifications

Grommet Type	Round
Material	Rubber
Colour	Black
Application	Cable management, For passing cable into trunking or panels, Secure a cable and prevent potential abrasion to the cable sheaths, Office desks to junction boxes

Mechanical Specifications

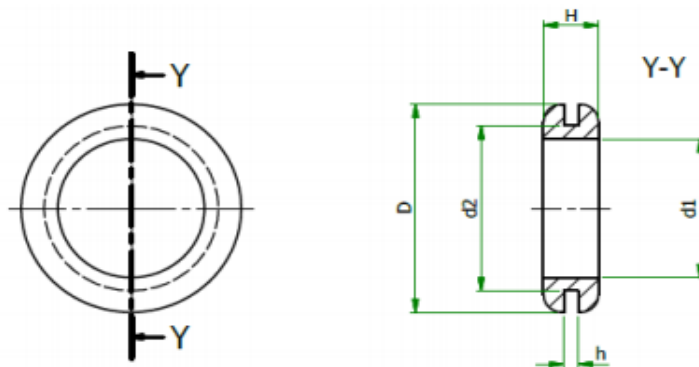
Maximum Panel Thickness	1.6mm
Panel Hole Diameter	12.5mm
Maximum Cable Diameter	9.5mm

Operation Environment Specifications

Operating Temperature Range	-40°C to +130°C
Minimum Operating Temperature	-40°C
Maximum Operating Temperature	+130°C

Approvals

Standards Met	ANSI/ESD S20.20:2014 and BS EN 61340-5-1:2007
----------------------	---



Dimensions

Stock Number	Mounting Hole (d2)	Panel Thickness (h)	d1	D	H	Material
543-197	6.4 (0.252")	1.6 (0.063")	4.0 (0.157")	9.5 (0.347")	6.3 (0.248")	PVC
543-204	9.5 (0.374")	1.6 (0.063")	6.4 (0.252")	14.2 (0.559")	5 (0.196")	PVC
543-210	12.5 (0.492")	1.6 (0.063")	9.5 (0.374")	17 (0.669")	7 (0.275")	PVC

Linear Tolerance

SIZE	(0)	(0.0)	(0.00)
0 - 10 mm	± 0.5	± 0.15	± 0.10
10 - 30 mm	± 0.5	± 0.20	± 0.15
30 - 50 mm	± 0.5	± 0.30	± 0.20
50 - 100 mm	± 0.8	± 0.50	± 0.25
100 - 200 mm	± 1.5	± 0.80	± 0.40
200 - 300 mm	± 2.0	± 1.20	± 0.80
300 - 500 mm	± 3.0	± 2.00	± 1.00
+ 500 mm	± 5.0	± 3.00	± 1.50