

RoHS Compliant

MATERIALS:

- A. BOOT: PE + 2L
- B. MIDDLE HOOD: PA-757/ PS-475
- C. METAL SHELL:
COPPER NICKEL PLATED
- D. INSULATOR: NYLON 6 + G.F.
- E. PIN CONTACT:
BRASS SILVER PLATED

| | |
|---|----------------------------|
| | 7.0Ø BACK SHELL |
| | 6.0Ø BACK SHELL |
| ⊗ | 5.0Ø BACK SHELL (STANDARD) |
| | COVER DIM. |

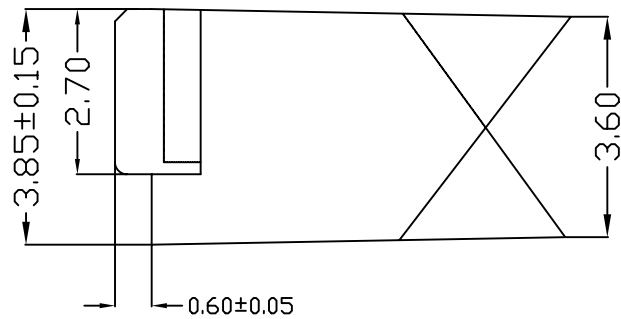
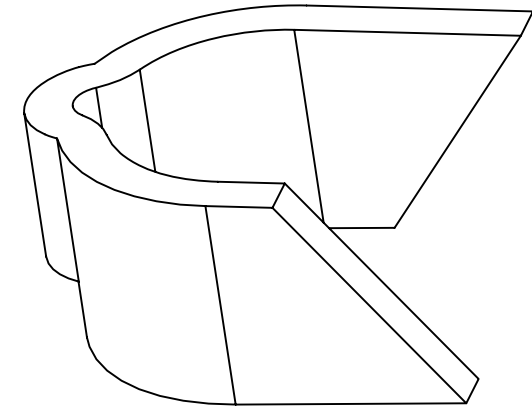
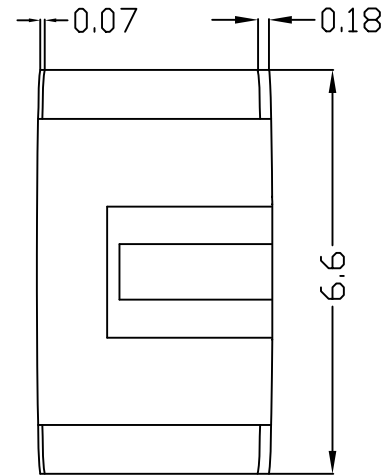
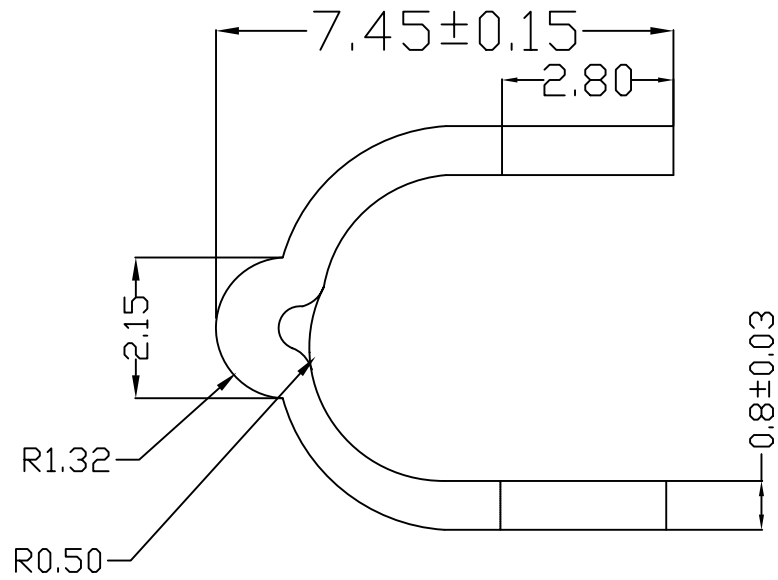
TABLE A

SPECIFICATIONS:

1. RATION: 100V AC 1A MAX or 12V DC 2A MAX.
2. INSULATION RESISTANCE: 50M OHM MIN at 250V DC.
3. DIELECTRIC STRENGTH: 250 V AC / 1 MINUTE.
4. CONTACT RESISTANCE: 30M OHM MAX.
5. INSERTION FORCE: 4.5KG MAX.
6. WITHDRAWAL FORCE: 0.9KG ~ 3KG.
7. OPERATING TEMPERATURE: -20°C ~ 105°C

 **笙龍實業有限公司**
SONION INDUSTRIAL CO., LTD.

| | | | |
|----------------|-----------|-----------------|----------------------|
| TOLERANCES | | PART NUMBER | |
| .X ± 0.1 | .XXX ± | 63000SER | |
| .XX ± 0.05 | ANGLES | | |
| DRAFT | | SCALE | DESCRIPTION |
| Maggie 012507' | | mm | Mini Din, Jack Ass'y |
| CHECK | APPROVAL | REV. | SHEET |
| Janne Hung | Danny Hsu | 120507' | 1/1 |



NOTES

1. MATERIAL: Fe 0.8t

NICKEL PLATED

| | |
|---|---|
|  笙龍實業有限公司 SONION INDUSTRIAL CO., LTD. | |
| TOLERANCES .x ± 0.15 .xxx ± .xx ± 0.1 ANGLES | PART NUMBER SR |
| DRAFT W.RAY013105' | DESCRIPTION SR FOR MINI DIN SERIES |
| CHECK JANNE HUNG | REV. A |
| APPROVAL DANNY HSU | SHEET 1/1 |