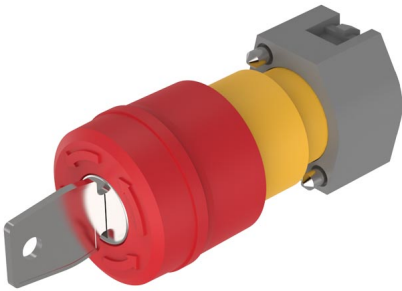


EAO – Your Expert Partner for Human Machine Interfaces

704.066.2 - Stop switch actuator

704.066.2 - Stop switch actuator



Attention: The preview is based on a sample product. This can differ from your current configuration.

Mounting

Mounting cut-out
Design \varnothing 22,3 mm
raised

Front

Front shape round
Front dimension \varnothing 37 mm

Other Attributes

Marking Arrows
Weight 0,300 kg

Operating-/Indication part

Lens material Plastic
Lens optics opaque
Lens profile Mushroom
Lens colour red
Lens illumination non-illuminative

IP-Rating

Front protection IP65

Actuator

Switching action Maintained
Housing colour yellow
Housing material Plastic

Switching element

max. number of switching elements 3

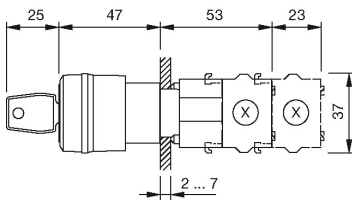
Function

Stop switch

EAO – Your Expert Partner for Human Machine Interfaces

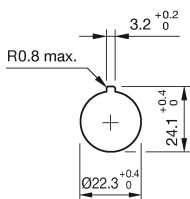
704.066.2 - Stop switch actuator

Dimensions

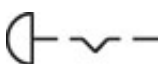


X = Screw terminal

Mounting cut-outs



Wiring diagram



Additional information

Shaft yellow
Key to unlock anti-clockwise
Lock type Euro-Locks 9500
Two keys are supplied with each key lock switch
Max. 3 slow-make elements can be clipped on

Legend

Switching action: C = Maintained