



DATA SHEET	10190000
EPIC® H-BE 6 SS / H-BE 6 BS	Valid from: 09.07.2015

Description

- Standard inserts with screw termination, crimp termination, cage clamp termination and Push-In termination
- The EPIC® H-BE series is suitable for applications that require a reliable connection when working with high voltages and currents



General Characteristics

Series	H-BE 6
Version	Male/Female(Article 10191000)
Wire Protection	Yes
Number of Contacts	6 + PE
Termination Methods	Screw termination: 0.5 - 2.5 mm ²
Temperature Range	-40°C to +100°C, short-term up to +125°C

Mechanical Characteristics

Cycle of mechanical operation	100
-------------------------------	-----

Electrical Characteristics

Rated Voltage, IEC	500 V
Rated Voltage, UL	600 V
Rated Voltage, CSA	600 V
Rated Impulse Voltage	6 kV
Rated Current, IEC	16 A
Rated Current, UL	16 A
Rated Current, CSA	16 A
Contact Resistance	< 2 mOhm
Degree of Soiling	3

Materials and Surfaces

Contacts	Copper alloy, hard silver-plated
Insulating Body	PC
Flammability Class according to UL 94	V0

Approvals

UL-Approval, E-File-Number	E75770
VDE-Approval, VDE-REG.-Nr.	B437

Standard

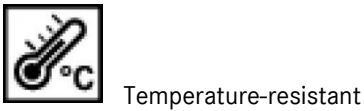
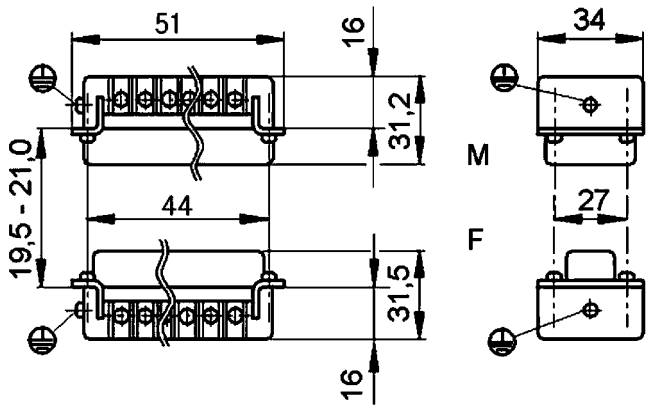
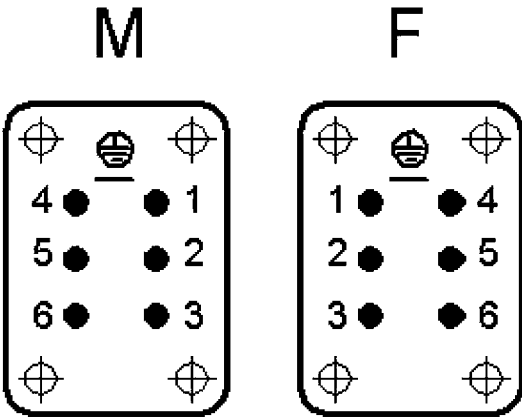
Product Standard	IEC 61984, UL 1977
------------------	--------------------

Creator: MANU2/PDP Released: IVSE1/PDP	Document: DB10190000EN Version: 00	Page 1 of 2
---	---------------------------------------	-------------

We reserve all rights according to DIN ISO 16016.

DATA SHEET	10190000
EPIC® H-BE 6 SS / H-BE 6 BS	Valid from: 09.07.2015

Technical Drawings



Info

Multifunctional insert for versatile applications
Screw, crimp, cage clamp and Push-In version - freely combinable

Application range

Mechanical engineering
Light & sound technology
Plastics industry

Remark

Photographs are not to scale and do not represent detailed images of the respective products.

Creator: MANU2/PDP Released: IVSE1/PDP	Document: DB10190000EN Version: 00	Page 2 of 2
---	---------------------------------------	-------------



DATA SHEET	19011000
EPIC® H-B 6 TG	Valid from: 23.07.2015

Description

- The smallest housing out of the H-B series.
- For inserts with high properties.



General Characteristics

Series	H-B 6
Version	Hood M20 / M25 (Article 19021000)
Locking	Bolt for single lever
Cable gland	No
Cable entry	Straight
Protection	IP 65(latched)
Temperature Range	-40°C to +100°C, short term up to +125°C

Materials and Surfaces

Housing	powder-coated aluminium alloy, grey
Lever	Zinc-plated steel

Approvals

VDE-Approval, VDE-REG.-Nr.	B437
----------------------------	------

Standard

Product Standard	IEC 61984
------------------	-----------

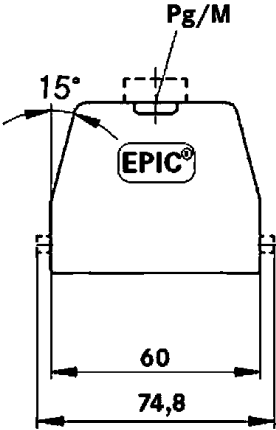
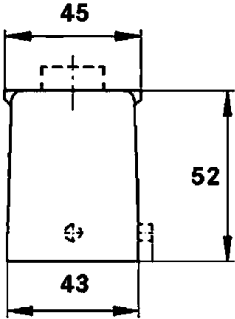
Creator: MANU2/PDP Released: IVSE1/PDP	Document: DB19011000EN Version: 00	Page 1 of 2
---	---------------------------------------	-------------

We reserve all rights according to DIN ISO 16016.



DATA SHEET	19011000
EPIC® H-B 6 TG	Valid from: 23.07.2015

Technical Drawings



Automation



Industrial machinery and plant engineering



Mechanical resistance



Robust



Waterproof

Info

Universal, robust metal housings size H-B 6

Application range

- Plant engineering
- Control engineering
- Plastics industry

Remark

Photographs are not to scale and do not represent detailed images of the respective products.

Creator: MANU2/PDP Released: IVSE1/PDP	Document: DB19011000EN Version: 00	Page 2 of 2
---	---------------------------------------	-------------

We reserve all rights according to DIN ISO 16016.