

# OTTA 6 - Bolt connection terminal block



0790433

<https://www.phoenixcontact.com/pc/products/0790433>

Please be informed that the data shown in this PDF document is generated from our online catalog. Please find the complete data in the user documentation. Our general terms of use for downloads are valid.



Bolt connection terminal block, nom. voltage: 800 V, nominal current: 41 A, number of connections: 2, connection method: Bolt connection, Rated cross section: 6 mm<sup>2</sup>, mounting type: NS 35/7,5, NS 35/15, NS 32, color: gray

## Commercial data

Item number	0790433
Packing unit	50 pc
Minimum order quantity	1 pc
Product key	BE4513
Catalog page	Page 564 (C-1-2019)
GTIN	4017918005542
Weight per piece (including packing)	22.329 g
Weight per piece (excluding packing)	22.329 g
Customs tariff number	85369010
Country of origin	IN

# OTTA 6 - Bolt connection terminal block



0790433

<https://www.phoenixcontact.com/pc/products/0790433>

## Technical data

### Product properties

Product type	Bolt connection terminal block
Product family	OTTA
Number of connections	2
Number of rows	1
Potentials	1

### Insulation characteristics

Overvoltage category	III
Degree of pollution	3

### Electrical properties

Rated surge voltage	8 kV
Maximum power dissipation for nominal condition	1.31 W

### Connection data

Number of connections per level	2
Nominal cross section	6 mm <sup>2</sup>
Stripping length	The stripping length depends on the specification provided by the cable lug manufacturer.
Connection in acc. with standard	IEC 60947-7-1
Nominal current	41 A
Maximum load current	41 A (with 6 mm <sup>2</sup> conductor cross section)
Nominal voltage	800 V (the nominal voltage applies to insulated cable lugs)
Nominal cross section	6 mm <sup>2</sup>

### Cable lug connection DIN 46234:1980-03

Connection in acc. with standard	DIN 46234:1980-03
Cross section	0.1 mm <sup>2</sup> ... 6 mm <sup>2</sup>
Cross section range AWG	24 ... 10 (converted acc. to IEC)
Hole diameter	4.3 mm
Width	9.6 mm
Bolt diameter	4 mm
Screw thread	M4
Tightening torque	1.5 ... 1.8 Nm
Identification color of ring cable lugs : red	1.5 mm <sup>2</sup>
Identification color of ring cable lugs : blue	2.5 mm <sup>2</sup>
Identification color of ring cable lugs : yellow	6 mm <sup>2</sup>
Connection in acc. with standard	DIN 46237:1970-07
Cross section	0.5 mm <sup>2</sup> ... 2.5 mm <sup>2</sup>
Cross section range AWG	20 ... 14 (converted acc. to IEC)
Hole diameter	4.3 mm
Width	9.6 mm

# OTTA 6 - Bolt connection terminal block



0790433

<https://www.phoenixcontact.com/pc/products/0790433>

Bolt diameter	4 mm
Screw thread	M4
Tightening torque	1.5 ... 1.8 Nm

## Dimensions

Width	11 mm
End cover width	1.5 mm
Height	43.5 mm
Depth on NS 32	57 mm
Depth on NS 35/7,5	52 mm
Depth on NS 35/15	59.5 mm

## Material specifications

Color	gray
Flammability rating according to UL 94	V0
Insulating material group	I
Insulating material	PA
Static insulating material application in cold	-60 °C
Temperature index of insulation material (DIN EN 60216-1 (VDE 0304-21))	130 °C
Relative insulation material temperature index (Elec., UL 746 B)	130 °C
Fire protection for rail vehicles (DIN EN 45545-2) R22	HL 1 - HL 3
Fire protection for rail vehicles (DIN EN 45545-2) R23	HL 1 - HL 3
Fire protection for rail vehicles (DIN EN 45545-2) R24	HL 1 - HL 3
Fire protection for rail vehicles (DIN EN 45545-2) R26	HL 1 - HL 3
Calorimetric heat release NFPA 130 (ASTM E 1354)	28 MJ/kg
Surface flammability NFPA 130 (ASTM E 162)	passed
Specific optical density of smoke NFPA 130 (ASTM E 662)	passed
Smoke gas toxicity NFPA 130 (SMP 800C)	passed

## Electrical tests

### Surge voltage test

Test voltage setpoint	9.8 kV
Result	Test passed

### Temperature-rise test

Requirement temperature-rise test	Increase in temperature $\leq$ 45 K
Result	Test passed
Short-time withstand current 6 mm <sup>2</sup>	0.72 kA
Result	Test passed

### Power-frequency withstand voltage

Test voltage setpoint	2 kV
Result	Test passed

# OTTA 6 - Bolt connection terminal block



0790433

<https://www.phoenixcontact.com/pc/products/0790433>

## Mechanical properties

### Mechanical data

Open side panel	Yes
-----------------	-----

## Mechanical tests

### Mechanical strength

Result	Test passed
--------	-------------

### Attachment on the carrier

DIN rail/fixing support	NS 32/NS 35
Test force setpoint	5 N
Result	Test passed

## Environmental and real-life conditions

### Needle-flame test

Time of exposure	30 s
Result	Test passed

### Oscillation/broadband noise

Specification	DIN EN 50155 (VDE 0115-200):2018-05
Frequency	5 Hz ... 150 Hz
Acceleration	5g (25 Hz ... 150 Hz)
Test duration per axis	2 h
Test directions	X-, Y- and Z-axis
Result	Test passed

### Shocks

Specification	DIN EN 50155 (VDE 0115-200):2018-05
Pulse shape	Half-sine
Acceleration	5g
Shock duration	50 ms
Test directions	X-, Y- and Z-axis (pos. and neg.)
Result	Test passed

### Ambient conditions

Ambient temperature (operation)	-60 °C ... 110 °C (Operating temperature range incl. self-heating; for max. short-term operating temperature, see RTI Elec.)
Ambient temperature (storage/transport)	-25 °C ... 60 °C (for a short time, no longer than 24 h, -60°C to +70°C)
Ambient temperature (assembly)	-5 °C ... 70 °C
Ambient temperature (actuation)	-5 °C ... 70 °C
Permissible humidity (operation)	20 % ... 90 %
Permissible humidity (storage/transport)	30 % ... 70 %

# OTTA 6 - Bolt connection terminal block



0790433

<https://www.phoenixcontact.com/pc/products/0790433>

## Standards and regulations

Connection in acc. with standard	IEC 60947-7-1
----------------------------------	---------------

## Mounting

Mounting type	NS 35/7,5
	NS 35/15
	NS 32

# OTTA 6 - Bolt connection terminal block



0790433

<https://www.phoenixcontact.com/pc/products/0790433>

## Drawings

### Circuit diagram

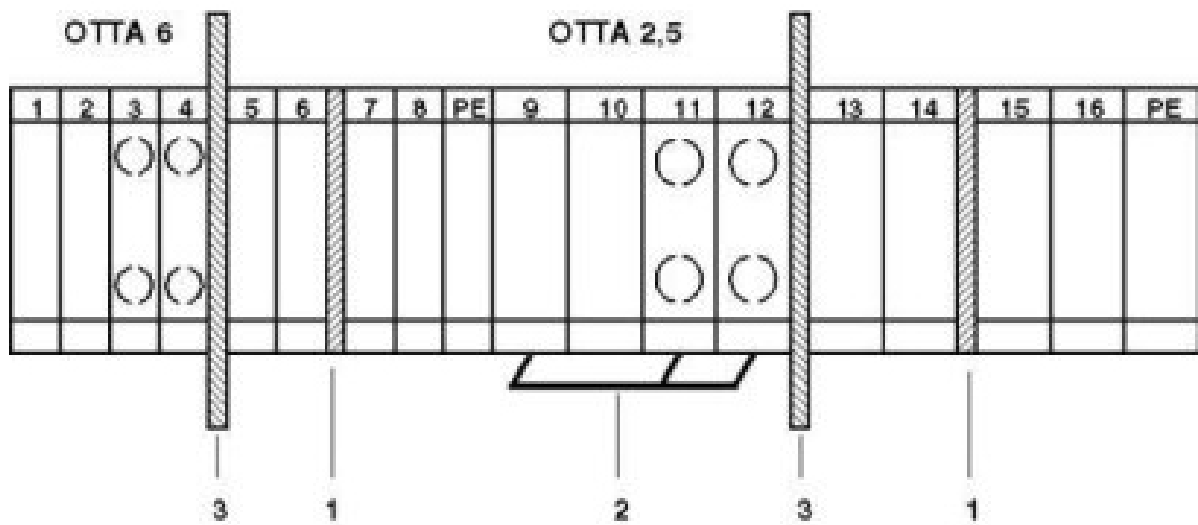


# OTTA 6 - Bolt connection terminal block

0790433

<https://www.phoenixcontact.com/pc/products/0790433>

Circuit diagram



# OTTA 6 - Bolt connection terminal block



0790433

<https://www.phoenixcontact.com/pc/products/0790433>

## Approvals

To download certificates, visit the product detail page: <https://www.phoenixcontact.com/pc/products/0790433>

### DNV

Approval ID: TAE00001CT



### CSA

Approval ID: 13631

	Nominal voltage $U_N$	Nominal current $I_N$	Cross section AWG	Cross section $\text{mm}^2$
	600 V	30 A	22 - 10	-



### UL Recognized

Approval ID: E60425

	Nominal voltage $U_N$	Nominal current $I_N$	Cross section AWG	Cross section $\text{mm}^2$
Use group B	600 V	30 A	-	-
Use group C	600 V	30 A	-	-



### IECEE CB Scheme

Approval ID: DE1-64022

	Nominal voltage $U_N$	Nominal current $I_N$	Cross section AWG	Cross section $\text{mm}^2$
	800 V	41 A	-	0.2 - 2.5



### EAC

Approval ID: RU C-DE.BL08.B.00540



### LR

Approval ID: LR2041789TA-02



### VDE Zeichengenehmigung

Approval ID: 40017896

	Nominal voltage $U_N$	Nominal current $I_N$	Cross section AWG	Cross section $\text{mm}^2$
	800 V	41 A	-	0.2 - 6



# OTTA 6 - Bolt connection terminal block



0790433

<https://www.phoenixcontact.com/pc/products/0790433>

## Classifications

### ECLASS

ECLASS-11.0	27141120
ECLASS-13.0	27250101

### ETIM

ETIM 9.0	EC000897
----------	----------

### UNSPSC

UNSPSC 21.0	39121400
-------------	----------

# OTTA 6 - Bolt connection terminal block



0790433

<https://www.phoenixcontact.com/pc/products/0790433>

## Environmental product compliance

REACH SVHC	Lead 7439-92-1
China RoHS	Environmentally Friendly Use Period = 50 years
	For information on hazardous substances, refer to the manufacturer's declaration available under "Downloads"

# OTTA 6 - Bolt connection terminal block

0790433

<https://www.phoenixcontact.com/pc/products/0790433>

## Accessories

 Note: Applying some accessories below might limit this product.


### EB 2-OTTA 6 - Insertion bridge

0790608

<https://www.phoenixcontact.com/pc/products/0790608>

Insertion bridge, pitch: 11 mm, number of positions: 2, color: gray



 Max. current carrying capacity: 41 A

---

### EB 3-OTTA 6 - Insertion bridge

3026036

<https://www.phoenixcontact.com/pc/products/3026036>

Insertion bridge, pitch: 11.1 mm, number of positions: 3, color: gray



 Max. current carrying capacity: 41 A

# OTTA 6 - Bolt connection terminal block

0790433

<https://www.phoenixcontact.com/pc/products/0790433>


## EB 4-OTTA 6 - Insertion bridge

3026049

<https://www.phoenixcontact.com/pc/products/3026049>

Insertion bridge, pitch: 11.1 mm, number of positions: 4, color: gray



 Max. current carrying capacity: 41 A

---


## EB 5-OTTA 6 - Insertion bridge

3026050

<https://www.phoenixcontact.com/pc/products/3026050>

Insertion bridge, pitch: 11.1 mm, number of positions: 5, color: gray



 Max. current carrying capacity: 41 A

# OTTA 6 - Bolt connection terminal block

0790433

<https://www.phoenixcontact.com/pc/products/0790433>


## EB 7-OTTA 6 - Insertion bridge

3026052

<https://www.phoenixcontact.com/pc/products/3026052>

Insertion bridge, pitch: 11.1 mm, number of positions: 7, color: gray



 Max. current carrying capacity: 41 A

---


## EB 10- OTTA 6 - Insertion bridge

0790420

<https://www.phoenixcontact.com/pc/products/0790420>

Insertion bridge, pitch: 11.1 mm, number of positions: 10, color: gray



 Max. current carrying capacity: 41 A

# OTTA 6 - Bolt connection terminal block

0790433

<https://www.phoenixcontact.com/pc/products/0790433>

## D-OTTA 6 - End cover

0790417

<https://www.phoenixcontact.com/pc/products/0790417>

End cover, depth: 40.8 mm, width: 1.5 mm, height: 43.5 mm, color: gray



## ATP-OTTA 6 - Partition plate

0790475

<https://www.phoenixcontact.com/pc/products/0790475>

Partition plate, depth: 40.8 mm, width: 1.5 mm, height: 69 mm, color: gray



# OTTA 6 - Bolt connection terminal block

0790433

<https://www.phoenixcontact.com/pc/products/0790433>

## NS 32 PERF 2000MM-VPE 10 - DIN rail perforated

1201002

<https://www.phoenixcontact.com/pc/products/1201002>



DIN rail perforated, Pack of 10 (20 m), acc. to EN 60715, material: Steel, galvanized, passivated with a thick layer, G profile, color: silver

---

## NS 32 UNPERF 2000MM-VPE 10 - DIN rail, unperforated

1201015

<https://www.phoenixcontact.com/pc/products/1201015>



DIN rail, unperforated, Pack of 10 (20 m), acc. to EN 60715, material: Steel, galvanized, passivated with a thick layer, G profile, color: silver

# OTTA 6 - Bolt connection terminal block

0790433

<https://www.phoenixcontact.com/pc/products/0790433>

## NS 35/ 7,5 PERF 2000MM - DIN rail perforated

0801733

<https://www.phoenixcontact.com/pc/products/0801733>



DIN rail perforated, Pack of 25 (50 m), acc. to EN 60715, material: Steel, galvanized, passivated with a thick layer, Standard profile, color: silver

---

## NS 35/ 7,5 UNPERF 2000MM - DIN rail, unperforated

0801681

<https://www.phoenixcontact.com/pc/products/0801681>



DIN rail, unperforated, Pack of 25 (50 m), acc. to EN 60715, material: Steel, galvanized, passivated with a thick layer, Standard profile, color: silver



# OTTA 6 - Bolt connection terminal block

0790433

<https://www.phoenixcontact.com/pc/products/0790433>

## NS 35/ 7,5 WH PERF 2000MM - DIN rail perforated

1204119

<https://www.phoenixcontact.com/pc/products/1204119>



DIN rail perforated, Pack of 25 (50 m), acc. to EN 60715, material: Steel, Galvanized, white passivated, Standard profile, color: silver

---

## NS 35/ 7,5 WH UNPERF 2000MM-VPE 10 - DIN rail, unperforated

1204122

<https://www.phoenixcontact.com/pc/products/1204122>



DIN rail, unperforated, Pack of 10 (20 m), acc. to EN 60715, material: Steel, Galvanized, white passivated, Standard profile, color: silver

# OTTA 6 - Bolt connection terminal block

0790433

<https://www.phoenixcontact.com/pc/products/0790433>

## NS 35/ 7,5 AL UNPERF 2000MM - DIN rail, unperforated

0801704

<https://www.phoenixcontact.com/pc/products/0801704>



DIN rail, unperforated, Pack of 25 (50 m), acc. to EN 60715, material: Aluminum, uncoated, Standard profile, color: silver

---

## NS 35/ 7,5 ZN PERF 2000MM - DIN rail perforated

1206421

<https://www.phoenixcontact.com/pc/products/1206421>



DIN rail perforated, Pack of 25 (50 m), acc. to EN 60715, material: Steel, galvanized, Standard profile, color: silver

# OTTA 6 - Bolt connection terminal block

0790433

<https://www.phoenixcontact.com/pc/products/0790433>

## NS 35/ 7,5 ZN UNPERF 2000MM - DIN rail, unperforated

1206434

<https://www.phoenixcontact.com/pc/products/1206434>



DIN rail, unperforated, Pack of 25 (50 m), acc. to EN 60715, material: Steel, galvanized, Standard profile, color: silver

---

## NS 35/ 7,5 CU UNPERF 2000MM-VPE 10 - DIN rail, unperforated

0801762

<https://www.phoenixcontact.com/pc/products/0801762>



DIN rail, unperforated, Pack of 10 (20 m), acc. to EN 60715, material: Copper, uncoated, Standard profile, color: copper-colored

# OTTA 6 - Bolt connection terminal block

0790433

<https://www.phoenixcontact.com/pc/products/0790433>

## NS 35/ 7,5 CAP - End cap

1206560

<https://www.phoenixcontact.com/pc/products/1206560>

DIN rail end piece, for DIN rail NS 35/7.5



---

## NS 35/15 PERF 2000MM - DIN rail perforated

1201730

<https://www.phoenixcontact.com/pc/products/1201730>



DIN rail perforated, Pack of 25 (50 m), similar to EN 60715, material: Steel, galvanized, passivated with a thick layer, Standard profile, color: silver

# OTTA 6 - Bolt connection terminal block

0790433

<https://www.phoenixcontact.com/pc/products/0790433>

## NS 35/15 UNPERF 2000MM - DIN rail, unperforated

1201714

<https://www.phoenixcontact.com/pc/products/1201714>



DIN rail, unperforated, Pack of 25 (50 m), similar to EN 60715, material: Steel, galvanized, passivated with a thick layer, Standard profile, color: silver

---

## NS 35/15 WH PERF 2000MM - DIN rail perforated

0806602

<https://www.phoenixcontact.com/pc/products/0806602>



DIN rail perforated, Pack of 25 (50 m), similar to EN 60715, material: Steel, Galvanized, white passivated, Standard profile, color: white

# OTTA 6 - Bolt connection terminal block

0790433

<https://www.phoenixcontact.com/pc/products/0790433>

## NS 35/15 WH UNPERF 2000MM-VPE 10 - DIN rail, unperforated

1204135

<https://www.phoenixcontact.com/pc/products/1204135>



DIN rail, unperforated, Pack of 10 (20 m), similar to EN 60715, material: Steel, Galvanized, white passivated, Standard profile, color: silver

---

## NS 35/15 AL UNPERF 2000MM - DIN rail, unperforated

1201756

<https://www.phoenixcontact.com/pc/products/1201756>



DIN rail, unperforated, similar to EN 60715, material: Aluminum, uncoated, Standard profile, color: silver

# OTTA 6 - Bolt connection terminal block

0790433

<https://www.phoenixcontact.com/pc/products/0790433>

## NS 35/15 ZN PERF 2000MM - DIN rail perforated

1206599

<https://www.phoenixcontact.com/pc/products/1206599>



DIN rail perforated, Pack of 25 (50 m), similar to EN 60715, material: Steel, galvanized, Standard profile, color: silver

---

## NS 35/15 ZN UNPERF 2000MM - DIN rail, unperforated

1206586

<https://www.phoenixcontact.com/pc/products/1206586>



DIN rail, unperforated, Pack of 25 (50 m), similar to EN 60715, material: Steel, galvanized, Standard profile, color: silver

# OTTA 6 - Bolt connection terminal block

0790433

<https://www.phoenixcontact.com/pc/products/0790433>



## NS 35/15 CU UNPERF 2000MM-VPE 10 - DIN rail, unperforated

1201895

<https://www.phoenixcontact.com/pc/products/1201895>



DIN rail, unperforated, Pack of 10 (20 m), similar to EN 60715, material: Copper, uncoated, Standard profile, color: copper-colored

---

## NS 35/15 CAP - End cap

1206573

<https://www.phoenixcontact.com/pc/products/1206573>

DIN rail end piece, for DIN rail NS 35/15





# OTTA 6 - Bolt connection terminal block

0790433

<https://www.phoenixcontact.com/pc/products/0790433>



## NS 35/15-2,3 UNPERF 2000MM-VPE 10 - DIN rail, unperforated

1201798

<https://www.phoenixcontact.com/pc/products/1201798>



DIN rail, unperforated, Pack of 10 (20 m), acc. to EN 60715, material: Steel, galvanized, passivated with a thick layer, Standard profile 2.3 mm, color: silver

---

## ZB 10:UNBEDRUCKT - Zack marker strip

1053001

<https://www.phoenixcontact.com/pc/products/1053001>



Zack marker strip, Strip, white, unlabeled, can be labeled with: PLOTMARK, CMS-P1-PLOTTER, mounting type: snapped, for terminal block width: 10.2 mm, lettering field size: 10.5 x 10.15 mm, Number of individual labels: 10

# OTTA 6 - Bolt connection terminal block

0790433

<https://www.phoenixcontact.com/pc/products/0790433>

## ZB 10 CUS - Zack marker strip

0824941

<https://www.phoenixcontact.com/pc/products/0824941>



Zack marker strip, can be ordered: Strip, white, labeled according to customer specifications, mounting type: snap into tall marker groove, for terminal block width: 10.2 mm, lettering field size: 10,15 x 10,5 mm, Number of individual labels: 10

---

## ZB10,LGS:FORTL.ZAHLEN - Zack marker strip

1053014

<https://www.phoenixcontact.com/pc/products/1053014>



Zack marker strip, Strip, white, labeled, can be labeled with: CMS-P1-PLOTTER, printed horizontally: consecutive numbers 1 ... 10, 11 ... 20, etc. up to 91 ... 100, mounting type: snapped, for terminal block width: 10.2 mm, lettering field size: 10,15 x 10,5 mm, Number of individual labels: 10

# OTTA 6 - Bolt connection terminal block

0790433

<https://www.phoenixcontact.com/pc/products/0790433>

## ZB10,QR:FORTL.ZAHLEN - Zack marker strip

1053027

<https://www.phoenixcontact.com/pc/products/1053027>



Zack marker strip, Strip, white, labeled, can be labeled with: CMS-P1-PLOTTER, Printed vertically: consecutive numbers 1 ... 10, 11 ... 20, etc. up to 91 ... 100, mounting type: snapped, for terminal block width: 10.2 mm, lettering field size: 10,15 x 10,5 mm, Number of individual labels: 10

---

## ZB10,LGS:L1-N,PE - Marker for terminal blocks

1053412

<https://www.phoenixcontact.com/pc/products/1053412>



Marker for terminal blocks, Strip, white, labeled, can be labeled with: CMS-P1-PLOTTER, horizontal: L1, L2, L3, N, PE, L1, L2, L3, N, PE, mounting type: snapped, for terminal block width: 10.2 mm, lettering field size: 10,15 x 10,5 mm, Number of individual labels: 10

# OTTA 6 - Bolt connection terminal block



0790433

<https://www.phoenixcontact.com/pc/products/0790433>

## ZB10,LGS:U-N - Marker for terminal blocks

1053438

<https://www.phoenixcontact.com/pc/products/1053438>



Marker for terminal blocks, Strip, white, labeled, can be labeled with: CMS-P1-PLOTTER, horizontal: U, V, W, N, GND, U, V, W, N, GND, mounting type: snapped, for terminal block width: 10.2 mm, lettering field size: 10,15 x 10,5 mm, Number of individual labels: 10

---

## UC-TM 10 - Marker for terminal blocks

0818069

<https://www.phoenixcontact.com/pc/products/0818069>



Marker for terminal blocks, Sheet, white, unlabeled, can be labeled with: BLUEMARK ID COLOR, BLUEMARK ID, BLUEMARK CLED, PLOTMARK, CMS-P1-PLOTTER, mounting type: snapped, for terminal block width: 10.2 mm, lettering field size: 9.6 x 10.5 mm, Number of individual labels: 48

# OTTA 6 - Bolt connection terminal block



0790433

<https://www.phoenixcontact.com/pc/products/0790433>

## UC-TM 10 CUS - Marker for terminal blocks

0824605

<https://www.phoenixcontact.com/pc/products/0824605>



Marker for terminal blocks, can be ordered: by sheet, white, labeled according to customer specifications, mounting type: snap into tall marker groove, for terminal block width: 10.2 mm, lettering field size: 9.6 x 10.5 mm, Number of individual labels: 48

---

## UCT-TM 10 - Marker for terminal blocks

0829142

<https://www.phoenixcontact.com/pc/products/0829142>



Marker for terminal blocks, Sheet, white, unlabeled, can be labeled with: TOPMARK NEO, TOPMARK LASER, BLUEMARK ID COLOR, BLUEMARK ID, BLUEMARK CLED, THERMOMARK PRIME, THERMOMARK CARD 2.0, THERMOMARK CARD, mounting type: snapped, for terminal block width: 10.2 mm, lettering field size: 8.9 x 9.6 mm, Number of individual labels: 36

# OTTA 6 - Bolt connection terminal block

0790433

<https://www.phoenixcontact.com/pc/products/0790433>



## UCT-TM 10 CUS - Marker for terminal blocks

0829623

<https://www.phoenixcontact.com/pc/products/0829623>



Marker for terminal blocks, can be ordered: by sheet, white, labeled according to customer specifications, mounting type: snap into tall marker groove, for terminal block width: 10.2 mm, lettering field size: 8.9 x 9.6 mm, Number of individual labels: 36

---

## CLIPFIX 35 - End bracket

3022218

<https://www.phoenixcontact.com/pc/products/3022218>



Quick mounting end clamp for NS 35/7,5 DIN rail or NS 35/15 DIN rail, with marking option, width: 9.5 mm, color: gray

# OTTA 6 - Bolt connection terminal block

0790433

<https://www.phoenixcontact.com/pc/products/0790433>

## CLIPFIX 35-5 - End bracket

3022276

<https://www.phoenixcontact.com/pc/products/3022276>



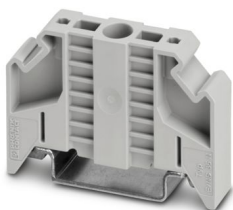
Quick mounting end clamp for NS 35/7,5 DIN rail or NS 35/15 DIN rail, with marking option, with parking option for FBS...5, FBS...6, KSS 5, KSS 6, width: 5.15 mm, color: gray

---

## E/NS 35 N - End bracket

0800886

<https://www.phoenixcontact.com/pc/products/0800886>



End clamp, width: 9.5 mm, color: gray

# OTTA 6 - Bolt connection terminal block

0790433

<https://www.phoenixcontact.com/pc/products/0790433>

## E/UK - End bracket

1201442

<https://www.phoenixcontact.com/pc/products/1201442>

End bracket, Mounting on a DIN rail NS 32 or NS 35, material: PA, color: gray



---

## E/UK 1 - End bracket

1201413

<https://www.phoenixcontact.com/pc/products/1201413>

End clamps, for supporting the ends of double-level and three-level terminal blocks, width: 10 mm, color: gray





# OTTA 6 - Bolt connection terminal block



0790433

<https://www.phoenixcontact.com/pc/products/0790433>

## SZS 1,0X6,5 VDE - Screwdriver

1205079

<https://www.phoenixcontact.com/pc/products/1205079>



Screwdriver, slot-headed, VDE insulated, size: 1.0 x 6.5 x 150 mm, 2-component grip, with non-slip grip

---

Phoenix Contact 2024 © - all rights reserved

<https://www.phoenixcontact.com>

PHOENIX CONTACT GmbH & Co. KG

Flachsmarktstraße 8

D-32825 Blomberg

+49 (0) 5235-3 00

[info@phoenixcontact.com](mailto:info@phoenixcontact.com)