



# LOTUS™ RT

## Sit-Stand Workstation

Ultimate flexibility with TriMotion™  
180° rotation at the base, 90° vertical  
adjustment, 180° worksurface rotation

Strong and stable with  
real wood work surface  
and steel gas spring arm

Transition easily with  
one-handed adjustment  
(left or right handed)

Keep essentials in reach  
with dual work surfaces and  
device viewing channel

Manage all cables with  
integrated cable channel



Mount to the back edge of any work  
surface with adjustable clamp design

Arrives assembled—just mount  
to the back of any work surface  
with adjustable clamp design



# LOTUS™ RT

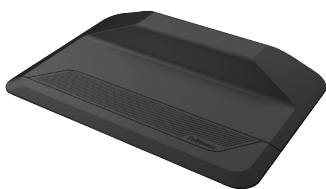
## Sit-Stand Workstation



<b>White - Mfr #</b>	8081701 - Single 8081801 - Dual
<b>Black - Mfr #</b>	8081501 - Single 8081601 - Dual
<b>Keyboard Platform (W x D)</b>	29.05" x 10.5"
<b>Top Platform (W x D)</b>	28.36" x 8.28"
<b>Top Platform Height (in lowest setting)</b>	5.38"
<b>Weight Capacity</b>	35 lbs
<b>Max Height from Desk</b>	17" to Keyboard Platform
<b>Height Adjustments</b>	Infinite Within Range
<b>Warranty</b>	5 Years
<b>Price</b>	

 [Click to Watch Product Video](#)

Get the most out of your workstation with these accessories:



**ActiveFusion™ Mat**  
Unique shape promotes stretching and movement throughout the day



**Professional Series Back Support**  
Stay more comfortable and help eliminate neck strain and lower back pain



**PlushTouch™ Keyboard Wrist Support**  
Helps to alleviate wrist pain and fatigue