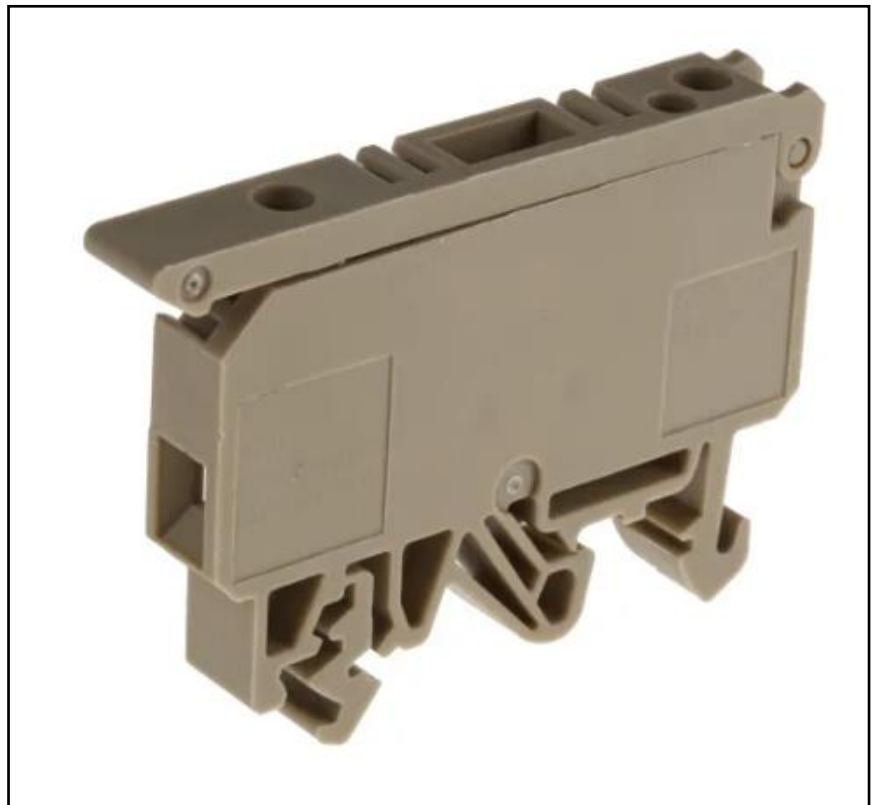


## FEATURES

- Foot can be snapped on TS 16, TS 32 and TS 35 DIN rails
- Housing made from polyamide 6.6 UL 94-V2
- Beige
- Single level
- Screw termination method
- Wire size of 22AWG to 12AWG
- 4mm<sup>2</sup> Cable CSA

## RS PRO, 600 V Disconnect Terminal Block, Screw Termination

RS Stock No.: 872-5615



RS Professionally Approved Products bring to you professional quality parts across all product categories. Our product range has been tested by engineers and provides a comparable quality to the leading brands without paying a premium price.

## Product Description

These fuse-disconnect terminals are used to stop the flow of electricity through a circuit. Unlike regular fused terminal blocks, which you may need to replace regularly, disconnect terminal blocks are a more permanent solution for safely cutting off a circuit.

## General Specifications

<b>Colour</b>	Beige
<b>Number of levels</b>	Single
<b>Termination method</b>	Screw Down
<b>Material</b>	Polyamide 6.6
<b>Screw Size</b>	Slotted M3
<b>Rail Type Compatibility</b>	TS 16, TS 32 and TS 35 DIN rails
<b>Contamination Degree</b>	3
<b>Poles</b>	2P
<b>Application</b>	Circuit boards and control panels for industrial electronics

## Electrical Specifications

<b>Current Rating</b>	16A (UL), 6.3A (CSA), 6.3A (IEC)
<b>Voltage Rating</b>	600V
<b>Rated Impulse Voltage</b>	6kV

## Mechanical Specifications

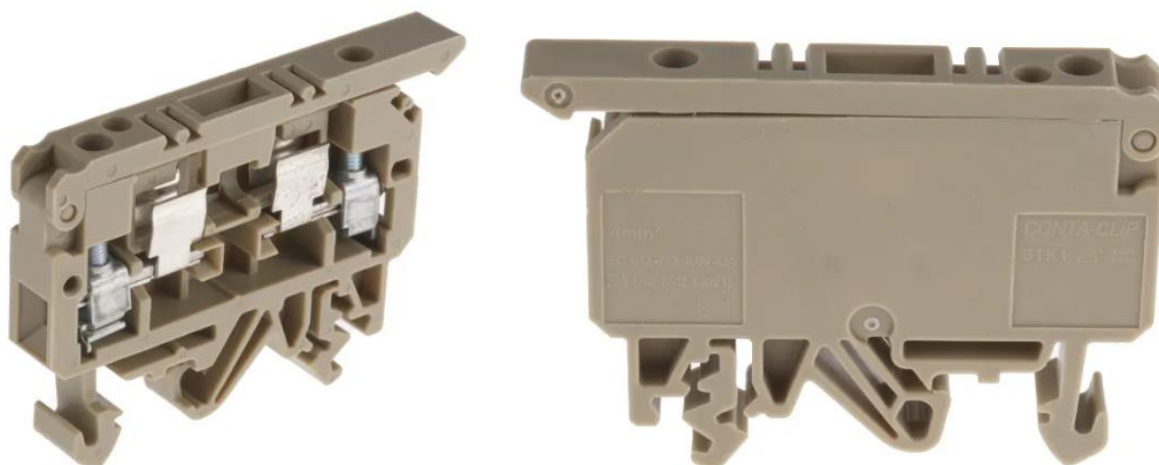
Wire size	22AWG to 12AWG
Cable CSA	4mm <sup>2</sup>
Fuse Size	5 x 20/5 x 25
Rated Wire Cross-Section	4mm <sup>2</sup>
Stripping Length	9mm
Contact Wire Range	0.2mm <sup>2</sup> to 4mm <sup>2</sup>
Torque	0.5Nm to 1Nm

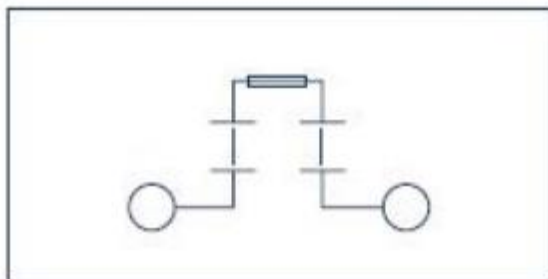
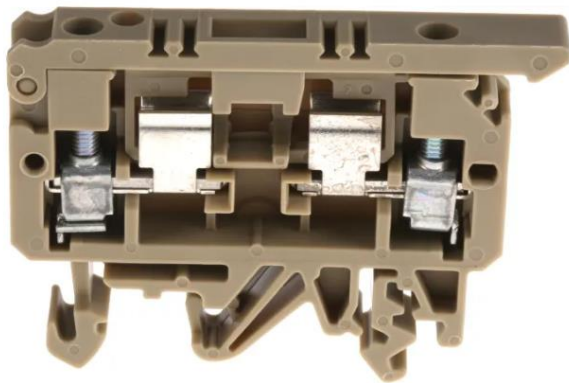
## Operation Environment Specifications

Minimum operating temperature	-40°C
Maximum operating temperature	105°C

## Approvals

Standard met	UL, CSA, IEC
--------------	--------------





Fuse-disconnect terminal  
2 connections/hinged lever