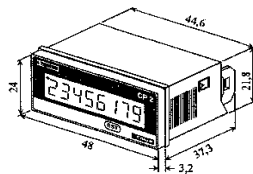


Replacement of 2108 (87610340) with CTR24 2241/2251

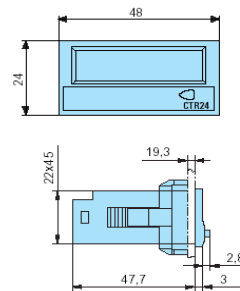
DIMENSIONS

CTR24 is bigger than 2108, depth of 47.7 mm

87610340



87622061 / 87622062

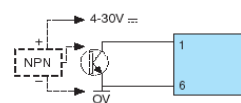
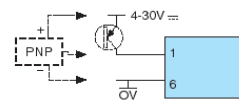
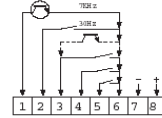
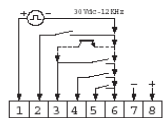
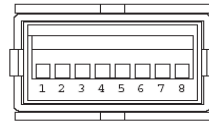
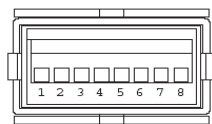


WIRING

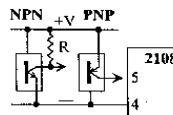
CTR24 must be chosen depending on the type of sensor (PNP or NPN) connected to the high speed input between 1 and 6. For applications using slow speed input between 2 and 6 (dry contact) both part number can be used

2241 / 87622061

2251 / 87622062



2108 / 87610340



- Détecteur 3 fils / 3 wire detectors / 3-Leiter-Sensoren / Rilevatore 3 fili / Detector 3 hilos
- PNP, +V : 4 - 30 V
- NPN, +V : 6.5 - 30 V
- +R : 3.9 kΩ 1/4 W