

ACT20X-2HTI-2SAO-S

Weidmüller Interfaces GmbH & Co. KG

Postfach 3030

32760 Detmold

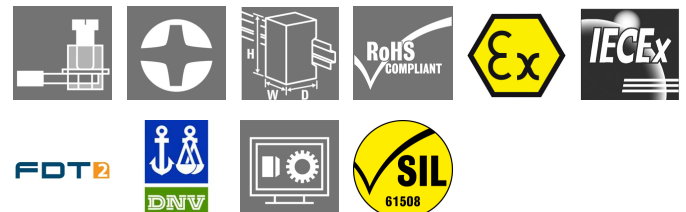
Tel. +49 5231 14-0

Fax. +49 5231 14-2083

info@weidmueller.com

www.weidmueller.com

Product image



The ACT20X-HTI-SAO / 2HTI-2SAO temperature transducers record temperatures from PT100 sensors and thermocouples from Ex zone 0. Current loops from 0(4) to 20 mA can also be connected on the input side. On the output side, there are active and passive current loops available for the safe zone. Integrated alarm contacts issue an alert in the event of a malfunction; this makes troubleshooting easier and increases system availability. The rail-mounted current output isolators are optionally available in one- or two-channel versions. With 11 mm width per channel, the devices need little space in the electrical cabinet.

General ordering data

Version	EX signal isolating converter, Ex-input: I,9, Safe-output: 4-20mA, 2-channel
Order No.	8965480000
Type	ACT20X-2HTI-2SAO-S
GTIN (EAN)	4032248785094
Qty.	1 pc(s).

ACT20X-2HTI-2SAO-S

Weidmüller Interfaces GmbH & Co. KG

Postfach 3030

32760 Detmold

Tel. +49 5231 14-0

Fax. +49 5231 14-2083

info@weidmueller.com

www.weidmueller.com

Technical data

Dimensions and weights

Depth	113.6 mm	Depth (inches)	4.472 inch
Height	119.2 mm	Height (inches)	4.693 inch
Width	22.5 mm	Width (inches)	0.886 inch
Net weight	180 g		

Temperatures

Storage temperature	-20 °C...85 °C	Operating temperature	-20 °C...60 °C
Operating temperature, min.	-20 °C	Operating temperature, max.	60 °C
Humidity	0...95 % (no condensation)		

Probability of failure

SIL PAPER	SIL certificate	SIL in compliance with IEC 61508	2
MTBF	111 Years		

Input EX

Input current	0...20 mA, 4...20mA	Input resistance, current	20 Ω + PTC 50 Ω
Line resistance in measuring circuit		Sensor	2-/3-/4-wire, RTD: PT10, PT20, PT50, PT100, PT250, PT300, PT400, PT500, PT1000, Ni50, Ni100, Ni120, Ni1000, Thermocouples: B, E, J, K, N, R, S, T ; in compliance with IEC 60584-1 and L, U in compliance with DIN43710
Temperature input range	≤ 50 Ω Configurable, PT100: -200...+850 °C, PT200: -200...+850 °C, PT1000: -200...+850 °C, NI100: -60 °C...+250 °C, Ni120: -80 °C...+320 °C, NI1000: -60 °C...+250 °C, B: +100...+1820 °C, E: (-100...+1000 °C), J: (-100...+1200 °C), K: (-180...+1372 °C), L: (-200...+900 °C), N: (-180...+1300 °C), R: (-50...+1760 °C), S: (-50...+1760 °C), T: (-200...+400 °C), U: (-200...+600 °C), W3: (0...+2300 °C), W5: (0...+2300 °C), LR: (-200...+800 °C)	Type	intrinsically safe circuit, RTD, TC, DC (mA)

Output

Influence of load resistance	≤ 0.01% of span / 100 Ω	Load impedance current	≤ 600 Ω
Output current	0...23 mA, configurable: 0...20 / 4...20 / 20...4 mA, configurable downscale (3.5 mA) / upscale (23 mA) @ error	Output signal limit	3.8...20.5 mA / 0...20.5 mA (dependent on range)
Type	active (as current source) or passive (as current sink)		

Creation date February 21, 2023 2:26:52 PM CET

Catalogue status 18.02.2023 / We reserve the right to make technical changes.

ACT20X-2HTI-2SAO-S

Weidmüller Interfaces GmbH & Co. KG

Postfach 3030

32760 Detmold

Tel. +49 5231 14-0

Fax. +49 5231 14-2083

info@weidmueller.com

Technical data

Alarm output

Alarm function	Line interruption at the input, Short circuit at input, No supply voltage, Device error	Continuous current	www.weidmueller.com ≤ 0.5 A AC / 0.3 A DC (safe zone), ≤ 0.5 A AC / 1 A DC (zone 2)
Nominal switching voltage	≤ 125 V AC / 110 V DC (safe area) ≤ 32 V AC / 32 V DC (zone 2)	Power rating	≤ 62.5 VA / 32 W (safe area) ≤ 16 VA / 32 W (Zone 2)
Type	Status relay, 1 NC (voltage-free)		

General specifications

Configuration	With FDT/DTM software, Requires configuration adapter 8978580000 CBX200 USB	Humidity	0...95 % (no condensation)
Power consumption	≤ 1.4 W	Protection degree	IP20
Step response time	≤ 400 ms (with current), ≤ 1 s (with temperature)	Type of connection	Screw connection
Voltage supply	19.2...31.2 V DC		

Insulation coordination

EMC standards	DIN EN 61326, NE 21	Insulation voltage	2.6 kV (input / output)
Rated voltage	300 V		

Data for Ex applications (ATEX)

Current I ₀	18.4 mA	Installation location	Device installed in safe area, zone 2
Marking	II (1) G [Ex ia Ga] IIC/IIB/ IIA, II (1) D [Ex ia Da] IIIC, I (M1) [Ex ia Ma] I	Power P ₀	40 mW
Voltage U ₀	8.7 V DC		

Safety-related basic specifications

Description of the "safe state"	analogue Output ≤ 3.6 mA or output ≥ 21 mA	Device type	B
Diagnostic test interval	30 s	T _{proof}	3 Years
Total failure rate for safe detected failures (λ _{Sd})	0 FIT	Hardware fault tolerance (HFT)	0
Safety category	SIL 2	Safe Failure Fraction (SFF)	90 %
Mean Time To Repair (MTTR)	24 h	Total failure rate for safe undetected failures (λ _{SU})	234 FIT
Total failure rate for dangerous detected failures (λ _{DD})	367 FIT	Total failure rate for dangerous undetected failures (λ _{DU})	61 FIT
Probability of outage PFH	6.1 x 10 ⁻⁸ h ⁻¹	Demand mode	High
Demand rate	3,000 s	Demand response time	Signal input: < 0.5 s (opto output), Temperature input: < 1.1 s (opto output)

ACT20X-2HTI-2SAO-S

Weidmüller Interfaces GmbH & Co. KG

Postfach 3030

32760 Detmold

Tel. +49 5231 14-0

Fax. +49 5231 14-2083

info@weidmueller.com

www.weidmueller.com

Technical data**Safety-related specifications Low demand mode**

Average Probability of Failure on Demand (PFD_{avg}) 3.96×10^{-4} (T_{proof} = 1 year), 6.5×10^{-4} (T_{proof} = 2 years), 1.41×10^{-4} (T_{proof} = 5 years)

Connection data

Type of connection	Screw connection	Tightening torque, min.	0.4 Nm
Tightening torque, max.	0.6 Nm	Clamping range, rated connection	2.5 mm ²
Clamping range, min.	0.25 mm ²	Clamping range, max.	2.5 mm ²
Wire connection cross section AWG, min.	AWG 26	Wire connection cross section AWG, max.	AWG 12

Guarantee

Time interval 3 years

Classifications

ETIM 6.0	EC002919	ETIM 7.0	EC002919
ETIM 8.0	EC002919	ECLASS 9.0	27-21-01-29
ECLASS 9.1	27-21-01-29	ECLASS 10.0	27-21-01-29
ECLASS 11.0	27-21-01-29	ECLASS 12.0	27-21-01-29

ACT20X-2HTI-2SAO-S

Weidmüller Interfaces GmbH & Co. KG

Postfach 3030

32760 Detmold

Tel. +49 5231 14-0

Fax. +49 5231 14-2083

info@weidmueller.com

www.weidmueller.com

Technical data

Tender specification sheets

Long specification

Short specification

Ex temperature transducer for RTD-/TC temperature signals and DC current signals, 2-channel
2-channel temperature transducer in 22.5 mm width with external power supply, for capturing and isolating RTD- / TC sensors and DC current signals 0(4)...20 mA from the Ex Zones 0, 1, 2.
The outputs can be operated as either an active 0(4)...20 mA signal or as a passive 4...20 mA current loop.
Status and error messages are available via a relay contact (NO).
The component can be configured using standard FDT/DTM software.
Add-on housing for TS35 rail mounting
Dimensions: L/W/H 119.2/ 22.5/ 113.6
Screw connection/ Nominal cross-section 2.5 mm²
Protection degree: IP 20
Input / channel RTD: PT100, PT500, PT1000, Ni100, Ni120, Ni1000
TC- Type: B, E, J, K, N, R, S, T, U, L

0(4)...20 mA
Output / channel active

0(4)...20 mA / 20..4 mA configurable
passive 4...20 mA current loop 3.5...26 V DC
Load / channel < 600 Ohm
Accuracy < 0,1 % v.E.
Temperature coefficient < 0,01% v.E./°C (Tu)
Alarm output relay 1 NO contact
250 V AC / 30 V DC @ 2A safe zone

Creation date February 21, 2023 2:26:52 PM CET 32 V AC @ 0.5 A/ 32 VDC @ 1 A Zone 2

Catalogue status 18.02.2023 / Weidmüller reserves the right to make technical changes.

ACT20X-2HTI-2SAO-S

Weidmüller Interfaces GmbH & Co. KG

Postfach 3030

32760 Detmold

Tel. +49 5231 14-0

Fax. +49 5231 14-2083

info@weidmueller.com

www.weidmueller.com

Technical data

Environmental Product Compliance

REACH SVHC	Lead 7439-92-1	www.weidmueller.com
SCIP	2f6dd957-421a-46db-a0c2-cf1609156924	

Approvals

Approvals



Approvals	DNVGL;
ROHS	Conform
UL File Number Search	UL Website
Certificate no. (cULus)	E337701

Downloads

Approval/Certificate/Document of Conformity	Certification SIL Certification DNV GL Certification ATEX Certification IECEX Certification UL Declaration of Conformity
Engineering Data	CAD data – STEP
Engineering Data	WSCAD
Software	Library and function block – WI-Manager, DTM-Library for online installation Release notes for Weidmueller FDT-DTM Software version
User Documentation	Instruction sheet Safety Manual for SIL application Handbuch ACT20X- Serie. deutsch Manual ACT20X- series. english 20210120 Security Advisory - WI-Manager affected by MundM Software fdtCONTAINER vulnerability
Catalogues	Catalogues in PDF-format
Brochures	

ACT20X-2HTI-2SAO-S

Weidmüller Interfaces GmbH & Co. KG

Postfach 3030

32760 Detmold

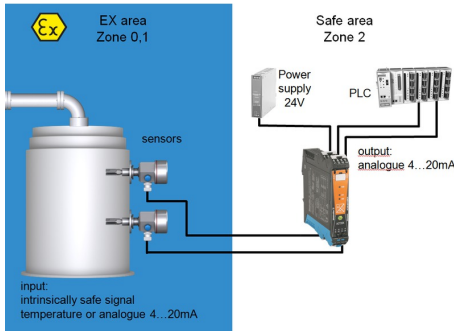
Tel. +49 5231 14-0

Fax. +49 5231 14-2083

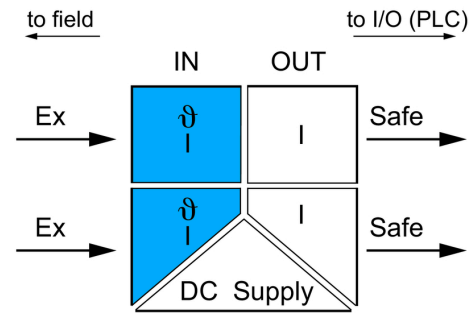
info@weidmueller.com

Drawings

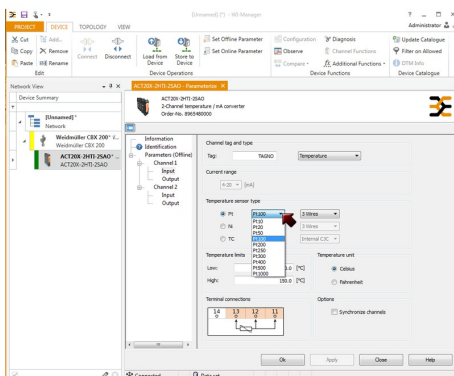
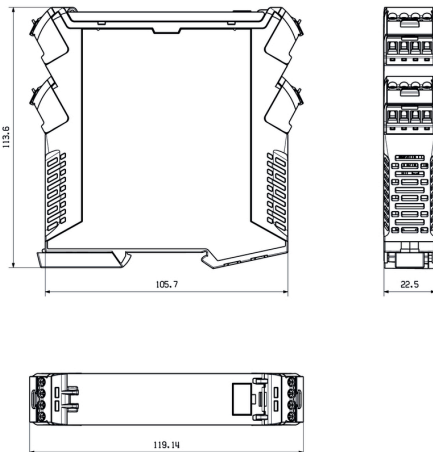
Application



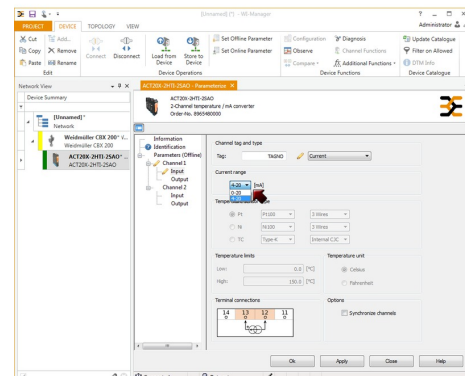
Block diagram



Dimensioned drawing



screenshot of temperature configuration with FDT2 / DTM software



screenshot of current configuration with FDT2 / DTM software

ACT20X-2HTI-2SAO-S

Weidmüller Interfaces GmbH & Co. KG

Postfach 3030

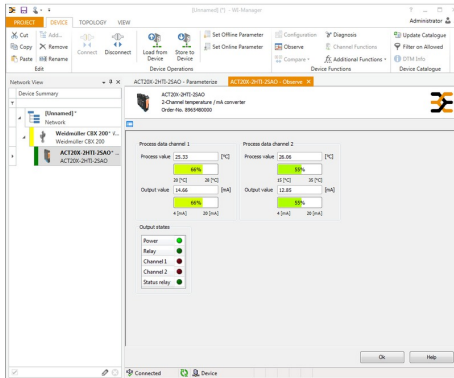
32760 Detmold

Tel. +49 5231 14-0

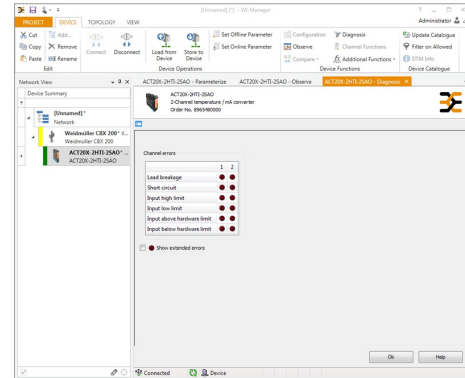
Fax. +49 5231 14-2083

info@weidmueller.com

Drawings



screenshot of "observe" with FDT2 / DTM software



screenshot of "diagnosis" with FDT2 / DTM software

Connection diagram

