

## ACT20X-HUI-SAO-S

Weidmüller Interfaces GmbH & Co. KG

Postfach 3030

32760 Detmold

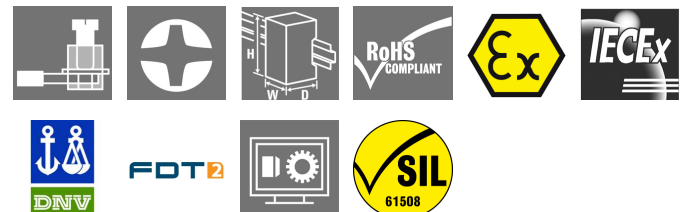
Tel. +49 5231 14-0

Fax. +49 5231 14-2083

info@weidmueller.com

www.weidmueller.com

### Product image, Similar to illustration



The ACT 20X HUI-SAO-S/ SAO-LP universal measurement and signal isolating converters can be configured individually.

Temperature signals from PT100 sensors and thermocouples as well as analogue DC current and voltage signals can be recorded from Ex zone 0.

On the output side, optional current/voltage (SAO-S) or 4...20 mA current loop signals (SAO-LP / SAO-S) are provided for the safe zone.

The ACT20X-HUI-SAO-S also has a relay output for configuring its switching threshold.

An integrated alarm contact is available on this device for issuing an alert in the event of a malfunction. This makes troubleshooting easier and also increases system availability.

The power supply of the signal isolating converter is either done using the integrated power supply (SAO-S) or alternatively over the output-side current loop (SAO-LP).

The rail mountable devices are designed with one channel, and are optionally available in widths of 12.5 mm (SAO-LP) or 22.5 mm (SAO-S).

### General ordering data

Version	EX signal isolating converter, Ex-output: U, I, R, S, Safe-output: 4-20mA/ relay, 1-channel
Order No.	<a href="#">8965490000</a>
Type	ACT20X-HUI-SAO-S
GTIN (EAN)	4032248785100
Qty.	1 pc(s).

## ACT20X-HUI-SAO-S

Weidmüller Interfaces GmbH & Co. KG

Postfach 3030

32760 Detmold

Tel. +49 5231 14-0

Fax. +49 5231 14-2083

info@weidmueller.com

www.weidmueller.com

## Technical data

### Dimensions and weights

Depth	113.6 mm	Depth (inches)	4.472 inch
Height	119.2 mm	Height (inches)	4.693 inch
Width	22.5 mm	Width (inches)	0.886 inch
Net weight	202 g		

### Temperatures

Storage temperature	-20 °C...85 °C	Operating temperature	-20 °C...60 °C
Operating temperature, min.	-20 °C	Operating temperature, max.	60 °C
Humidity	0...95 % (no condensation)		

### Probability of failure

SIL PAPER	SIL certificate	SIL in compliance with IEC 61508	2
MTBF	74 Years		

### Input EX

Input current	0...20 mA, 4...20 mA	Input resistance	configurable, 0... 10 kΩ
Input resistance, current	20 Ω + PTC 50 Ω	Input resistance, voltage	> 10 MΩ @ 600 mV, 2 MΩ @ 28 V
Input voltage	configurable, 0...1 V DC, 0,2...1 V DC, 1...5 V DC, 0...(5)10 V, 2...10 V DC	Line resistance in measuring circuit	≤ 50 Ω
Potentiometer		Sensor	2-/3-/4-wire, RTD: PT10, PT20, PT50, PT100, PT250, PT300, PT400, PT500, PT1000, Ni50, Ni100, Ni120, Ni1000, Thermocouples: B, E, J, K, N, R, S, T ; in compliance with IEC 60584-1 and L, U in compliance with DIN43710, Potentiometer, Resistance: 0 - 12 kΩ
Sensor supply	10 Ω... 10 kΩ	Temperature input range	Configurable, PT100: -200...+850 °C, PT200: -200...+850 °C, PT1000: -200...+850 °C, NI100: -60°C...+250 °C, Ni120: -80 °C...+320 °C, NI1000: -60°C...+250 °C, B: +100...+1820 °C, E: (-100...+1000 °C), J: (-100...+1200 °C), K: (-180...+1372 °C), L: (-200...+900 °C), N: (-180...+1300 °C), R: (-50...+1760 °C), S: (-50...+1760 °C), T: (-200...+400 °C), U: (-200...+600 °C), W3: (0...+2300 °C), W5: (0...+2300 °C), LR: (-200...+800 °C)
Type	21.4...16.5 V DC / 0...20 mA intrinsically safe circuit, active (as current source) or passive (as current sink)		

## ACT20X-HUI-SAO-S

Weidmüller Interfaces GmbH & Co. KG

Postfach 3030

32760 Detmold

Tel. +49 5231 14-0

Fax. +49 5231 14-2083

info@weidmueller.com

## Technical data

### Output

Influence of load resistance	$\leq 0.01\%$ of span / $100 \Omega$	Load impedance current	$\leq 600 \Omega$
Output current	0...23 mA, configurable: 0...20 / 4...20 / 20...4 mA, configurable downscale (3.5 mA) / upscale (23 mA) @ error	Output signal limit	3.8...20.5 mA / 0...20.5 mA (dependent on range)
Type	active (as current source) or passive (as current sink)		

### Digital output

Continuous current	$\leq 2$ A AC/DC (safe area, Zone 2 area)	Function	Configurable switching thresholds, Window function, Sensor error
Nominal switching voltage	$\leq 250$ V AC / $30$ V DC (safe area) $\leq 32$ V AC / $32$ V DC (zone 2)	Power rating	$\leq 500$ VA / $60$ W (safe area) $\leq 16$ VA / $32$ W (Zone 2)
Type	Relay, 1 NO		

### Alarm output

Alarm function	Short circuit at input, Open circuit at input, No supply voltage, Device error	Continuous current	$\leq 0.5$ A AC / $0.3$ A DC (safe zone), $\leq 0.5$ A AC / $1$ A DC (zone 2)
Nominal switching voltage	$\leq 125$ V AC / $110$ V DC (safe area) $\leq 32$ V AC / $32$ V DC (zone 2)	Power rating	$\leq 62.5$ VA / $32$ W (safe area) $\leq 16$ VA / $32$ W (Zone 2)
Type	Status relay, 1 NC (voltage- free)		

### General specifications

Configuration	With FDT/DTM software, Requires configuration adapter 8978580000 CBX200 USB	Humidity	0...95 % (no condensation)
Power consumption	$\leq 2.1$ W	Protection degree	IP20
Type of connection	Screw connection	Voltage supply	19.2...31.2 V DC

### Insulation coordination

EMC standards	DIN EN 61326, NE 21	Insulation voltage	2.6 kV (input / output)
Pollution severity	2	Rated voltage	300 V

### Data for Ex applications (ATEX)

Current $I_0$	18.4 mA	Installation location	Device installed in safe area, zone 2
Marking	II (1) G [Ex ia Ga] IIC/IIB/ IIA, I (M1) [Ex ia Ma] I, II (1) G [Ex ia Ga] IIC, II (1) D [Ex ia Da] IIIC	Power $P_0$	40 mW
Voltage $U_0$	8.7 V DC		

Creation date February 21, 2023 2:26:19 PM CET

Catalogue status 18.02.2023 / We reserve the right to make technical changes.

## ACT20X-HUI-SAO-S

Weidmüller Interfaces GmbH &amp; Co. KG

Postfach 3030

32760 Detmold

Tel. +49 5231 14-0

Fax. +49 5231 14-2083

info@weidmueller.com

## Technical data

## Safety-related basic specifications

Description of the "safe state"	analogue Output $\leq 3.6$ mA or output $\geq 21$ mA, de-energized (relay output)	Device type	www.weidmueller.com
Diagnostic test interval	30 s		B
Total failure rate for safe detected failures ( $\lambda_{SD}$ )	0 FIT	$T_{proof}$	4 Years
Safety category	SIL 2	Hardware fault tolerance (HFT)	0
Safe Failure Fraction (SFF)	93 %	Relay lifetime	100000 times
Total failure rate for safe undetected failures ( $\lambda_{SU}$ )	278 FIT	Mean Time To Repair (MTTR)	24 h
Total failure rate for dangerous undetected failures ( $\lambda_{DU}$ )	43 FIT	Total failure rate for dangerous detected failures ( $\lambda_{DD}$ )	352 FIT
Demand mode	High	Probability of outage PFH	$4.33 \times 10^{-8} \text{ h}^{-1}$
Demand response time	Signal input: $< 0.5$ s (opto output), Temperature input: $< 1.1$ s (opto output)	Demand rate	3,000 s

## Safety-related specifications Low demand mode

Average Probability of Failure on Demand (PFD <sub>avg</sub> )	2.82 x $10^{-4}$ ( $T_{proof} = 1$ year), 4.63 x $10^{-4}$ ( $T_{proof} = 2$ years), 1.00 x $10^{-3}$ ( $T_{proof} = 5$ years), additional data in the safety manual
--	--

## Connection data

Type of connection	Screw connection	Tightening torque, min.	0.4 Nm
Tightening torque, max.	0.6 Nm	Clamping range, rated connection	2.5 mm <sup>2</sup>
Clamping range, min.	0.25 mm <sup>2</sup>	Clamping range, max.	2.5 mm <sup>2</sup>
Wire connection cross section AWG, min.	AWG 26	Wire connection cross section AWG, max.	AWG 12

## Guarantee

Time interval	3 years
---------------	---------

## Classifications

ETIM 6.0	EC002653	ETIM 7.0	EC002653
ETIM 8.0	EC002653	ECLASS 9.0	27-21-01-20
ECLASS 9.1	27-21-01-20	ECLASS 10.0	27-21-01-20
ECLASS 11.0	27-21-01-20	ECLASS 12.0	27-21-01-20

**ACT20X-HUI-SAO-S**

**Weidmüller Interfaces GmbH & Co. KG**

Postfach 3030

32760 Detmold

Tel. +49 5231 14-0

Fax. +49 5231 14-2083

info@weidmueller.com

**Technical data**

www.weidmueller.com

**Tender specification sheets**

Long specification

Short specification

**Ex universal measurement isolating transformer and trip amplifier for RTD-/ TC temperature and DC-current-/ voltage signals**  
**1-channel measurement isolating transformer and trip amplifier in 22.5 mm width with external power supply, for capturing and isolating RTD- / TC sensors, resistors , potentiometers and DC current signals**  
**0(4)...20 mA and voltages 0...12 V from Ex zones 0,1,2. Sensors can be supplied via the 0...20 mA current loop. The output can be operated as either an active 0(4)...20 mA signal or as a passive 4...20 mA current loop. A relay contact (NO) is available on the output side for limit value monitoring. Status/error messages are issued via a relay contact (NO). The component can be configured using standard FDT/DTM software.**

**Add-on housing for TS35 rail mounting**  
**Dimensions: L/W/H**  
**119.2/ 22.5/ 113.6**  
**Screw connection/**  
**Nominal cross-section**  
**2.5 mm<sup>2</sup>**  
**Protection degree: IP**  
**20**  
**Input RTD:**  
**PT100, PT500, PT1000,**  
**Ni50, Ni100, Ni120,**  
**Ni1000**

**Resistance 0...10**  
**kOhm / Potentiometer**  
**10 Ohm... 10 kOhm**

**TC-**  
**Type: B, E, J, K, N, R, S,**  
**T, U, L**

**0(4)...20 mA**

**0...12 V/ 2...10 V**  
**Sensor supply 28...16.5**  
**VDC / 0...20 mA**

**Output**

Creation date February 21, 2023 2:26:19 PM CET

**ACT20X-HUI-SAO-S**

**Weidmüller Interfaces GmbH & Co. KG**

Postfach 3030

32760 Detmold

Tel. +49 5231 14-0

Fax. +49 5231 14-2083

[info@weidmueller.com](mailto:info@weidmueller.com)

[www.weidmueller.com](http://www.weidmueller.com)

**Technical data**

**Environmental Product Compliance**

REACH SVHC	Lead 7439-92-1	<a href="http://www.weidmueller.com">www.weidmueller.com</a>
SCIP	2f6dd957-421a-46db-a0c2-cf1609156924	

**Approvals**

Approvals



Approvals	DNVGL;
ROHS	Conform
UL File Number Search	UL Website
Certificate no. (cULus)	E337701

**Downloads**

Approval/Certificate/Document of Conformity	<a href="#">Certification SIL</a> <a href="#">Certification DNV GL</a> <a href="#">Certification ATEX</a> <a href="#">Certification IECEX</a> <a href="#">Certification UL</a> <a href="#">Declaration of Conformity</a>
Engineering Data	<a href="#">CAD data – STEP</a>
Engineering Data	<a href="#">WSCAD</a>
Software	<a href="#">Library and function block – WI-Manager, DTM-Library for online installation</a> <a href="#">Release notes for Weidmueller FDT-DTM Software version</a>
User Documentation	<a href="#">Instruction sheet</a> <a href="#">Safety Manual for SIL application</a> <a href="#">Handbuch ACT20X- Serie. deutsch</a> <a href="#">Manual ACT20X- series. english</a> <a href="#">20210120 Security Advisory - WI-Manager affected by MundM Software fdtCONTAINER vulnerability</a>
Catalogues	<a href="#">Catalogues in PDF-format</a>
Brochures	

**ACT20X-HUI-SAO-S**

**Weidmüller Interfaces GmbH & Co. KG**

Postfach 3030

32760 Detmold

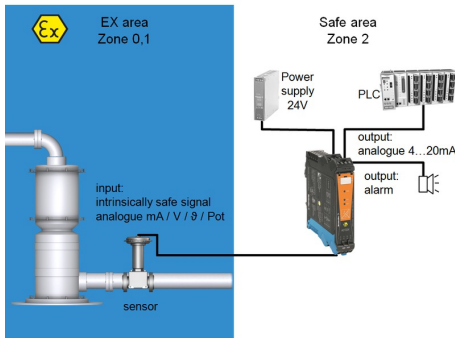
Tel. +49 5231 14-0

Fax. +49 5231 14-2083

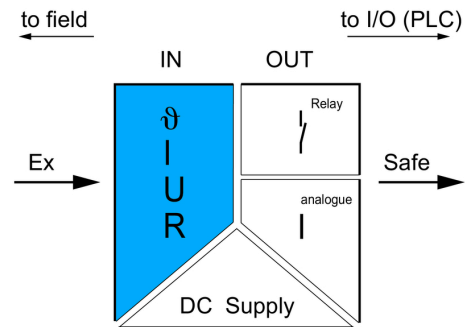
info@weidmueller.com

**Drawings**

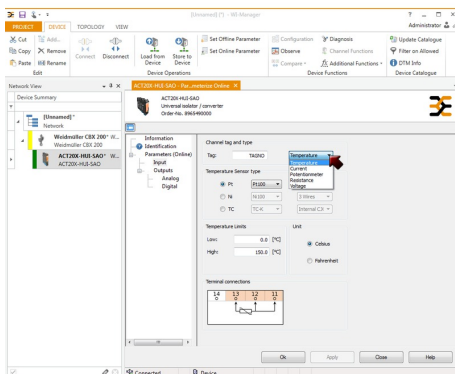
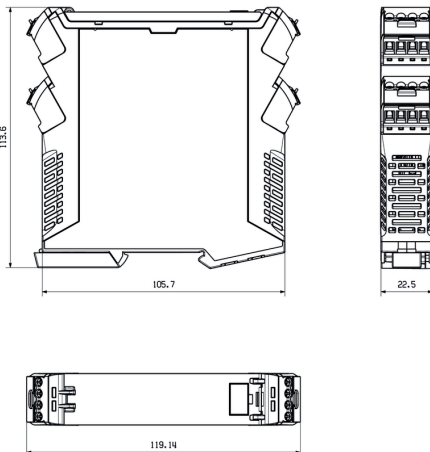
**Application**



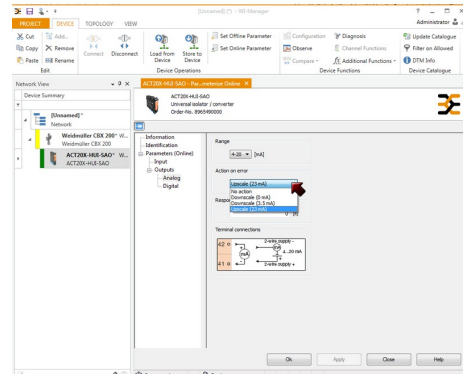
**Block diagram**



**Dimensioned drawing**



screenshot of temperature input configuration with FDT2 / DTM software



screenshot of output configuration with FDT2 / DTM software

**ACT20X-HUI-SAO-S**

**Weidmüller Interfaces GmbH & Co. KG**

Postfach 3030

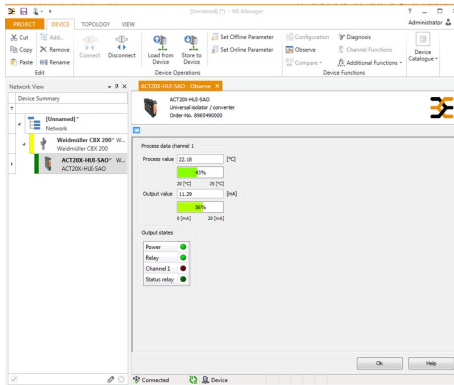
32760 Detmold

Tel. +49 5231 14-0

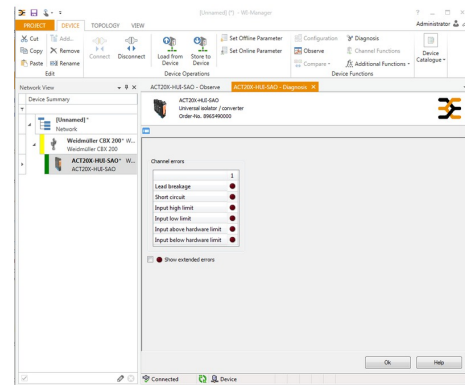
Fax. +49 5231 14-2083

info@weidmueller.com

**Drawings**



screenshot of "observe" with FDT2 / DTM software



screenshot of "diagnosis" with FDT2 / DTM software

**Connection diagram**

