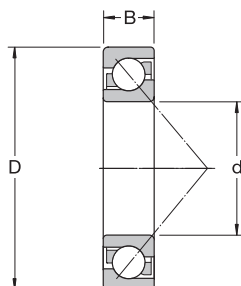


Single row angular contact ball bearings

d 10 - 35 mm

d 0.394 - 1.378 in



40° contact angle

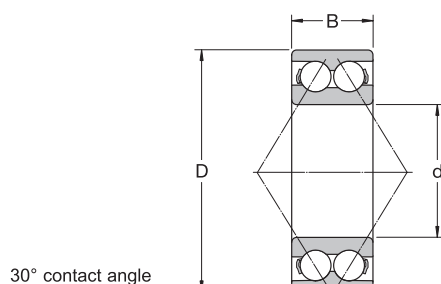
Principal dimensions						Basic load ratings		Fatigue load limit P_u	Speed ratings		Mass kg	Designations	
d	D	B	d	D	B	C	C_0		Reference speed	Limiting speed		Universally matchable bearing	Basic design bearing
mm			in			kN		kN	r/min		kg	–	
10	30	9	0.394	1.181	0.354	7.02	3.35	0.14	30 000	30 000	0.03	7200 BECBP	7200 BEP
12	32	10	0.472	1.260	0.394	7.61	3.8	0.16	26 000	26 000	0.036	7201 BECBP	7201 BEP
	37	12		1.457	0.472	10.6	5	0.208	24 000	24 000	0.063	–	7301 BEP
15	35	11	0.591	1.378	0.433	8.84	4.8	0.204	24 000	24 000	0.045	7202 BECBP	7202 BEP
	42	13		1.654	0.512	13	6.7	0.28	20 000	20 000	0.081	7302 BECBP	7302 BEP
17	40	12	0.669	1.575	0.472	11	5.85	0.25	22 000	22 000	0.064	* 7203 BECBP	–
	40	12		1.575	0.472	10.4	5.5	0.236	20 000	20 000	0.064	–	7203 BEP
	40	12		1.575	0.472	11.1	6.1	0.26	20 000	20 000	0.064	–	7203 BEY
	40	12		1.575	0.472	11	5.85	0.25	22 000	22 000	0.07	* 7203 BECBM	–
	47	14		1.850	0.551	15.9	8.3	0.355	19 000	19 000	0.11	7303 BECBP	7303 BEP
20	47	14	0.787	1.850	0.551	14	8.3	0.355	18 000	18 000	0.11	7204 BECBP	7204 BEP
	47	14		1.850	0.551	14	8.3	0.355	18 000	18 000	0.11	7204 BECBY	–
	47	14		1.850	0.551	13.3	7.65	0.325	18 000	19 000	0.11	7204 BECBM	–
	52	15		2.047	0.591	19	10	0.425	18 000	18 000	0.14	* 7304 BECBP	–
	52	15		2.047	0.591	17.4	9.5	0.4	16 000	16 000	0.14	–	7304 BEP
	52	15		2.047	0.591	19	10.4	0.44	16 000	16 000	0.15	7304 BECBY	7304 BEY
	52	15		2.047	0.591	19	10	0.425	18 000	18 000	0.15	* 7304 BECBM	–
25	52	15	0.984	2.047	0.591	15.6	10	0.43	17 000	17 000	0.13	* 7205 BECBP	–
	52	15		2.047	0.591	14.8	9.3	0.4	15 000	15 000	0.13	–	7205 BEP
	52	15		2.047	0.591	15.6	10.2	0.43	15 000	15 000	0.13	7205 BECBY	7205 BEY
	52	15		2.047	0.591	15.6	10	0.43	17 000	17 000	0.14	* 7205 BECBM	–
	62	17		2.441	0.669	26.5	15.3	0.655	15 000	15 000	0.23	* 7305 BECBP	–
	62	17		2.441	0.669	24.2	14	0.6	14 000	14 000	0.23	–	7305 BEP
	62	17		2.441	0.669	26	15.6	0.655	14 000	14 000	0.24	7305 BECBY	7305 BEY
	62	17		2.441	0.669	26.5	15.3	0.655	15 000	15 000	0.24	* 7305 BECBM	–
30	62	16	1.181	2.441	0.630	24	15.6	0.655	14 000	14 000	0.19	* 7206 BECBP	–
	62	16		2.441	0.630	22.5	14.3	0.61	13 000	13 000	0.19	–	7206 BEP
	62	16		2.441	0.630	23.8	15.6	0.655	13 000	13 000	0.21	7206 BECBY	7206 BEY
	62	16		2.441	0.630	24	15.6	0.655	14 000	14 000	0.21	* 7206 BECBM	–
	72	19		2.835	0.748	35.5	21.2	0.9	13 000	13 000	0.33	* 7306 BECBP	–
	72	19		2.835	0.748	32.5	19.3	0.815	12 000	12 000	0.33	–	7306 BEP
	72	19		2.835	0.748	34.5	21.2	0.9	12 000	12 000	0.37	7306 BECBY	7306 BEY
35	72	17	1.378	2.835	0.669	31	20.8	0.88	12 000	12 000	0.28	* 7207 BECBP	–
	72	17		2.835	0.669	29.1	19	0.815	11 000	11 000	0.28	–	7207 BEP
	72	17		2.835	0.669	30.7	20.8	0.88	11 000	11 000	0.3	7207 BECBY	7207 BEY
	72	17		2.835	0.669	31	20.8	0.88	12 000	12 000	0.3	* 7207 BECBM	–
	80	21		3.150	0.827	41.5	26.5	1.14	11 000	11 000	0.45	* 7307 BECBP	–
	80	21		3.150	0.827	39	24.5	1.04	10 000	10 000	0.45	–	7307 BEP
	80	21		3.150	0.827	39	24.5	1.04	10 000	10 000	0.49	7307 BECBY	7307 BEY
	80	21		3.150	0.827	41.5	26.5	1.14	11 000	11 000	0.49	* 7307 BECBM	–

* SKF Explorer bearing

Double row angular contact ball bearings

d 10 - 65 mm

d 0.397 - 2.582 in

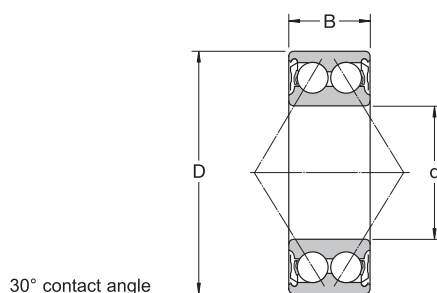


Principal dimensions						Basic load ratings		Fatigue load limit P_u	Speed ratings		Mass kg	Designations		
d	D	B	d	D	B	dynamic C	static C_0		Reference speed	Limiting speed		Bearing with metal cage	polyamide cage	
mm			in			kN		kN	r/min		–			
10	30	14	0.3937	1.1811	0.5512	7.61	4.3	0.183	22 000	24 000	0.051	–	3200 ATN9	
12	32	15.9	0.4724	1.2598	0.6260	10.1	5.6	0.24	20 000	22 000	0.058	–	3201 ATN9	
15	35	15.9	0.5906	1.3780	0.6260	11.2	6.8	0.285	17 000	18 000	0.066	–	3202 ATN9	
	42			19	1.6535	0.7480	15.1	9.3	0.4	15 000	16 000	0.13	–	3302 ATN9
17	40	17.5	0.6693	1.5748	0.6890	14.3	8.8	0.365	15 000	16 000	0.096	–	3203 ATN9	
	47			22.2	1.8504	0.8740	21.6	12.7	0.54	14 000	14 000	0.18	–	3303 ATN9
20	47	20.6	0.7874	1.8504	0.8110	20	12	0.51	14 000	14 000	0.16	* 3204 A	* 3204 ATN9	
	52			22.2	2.0472	0.8740	23.6	14.6	0.62	13 000	13 000	0.22	* 3304 A	* 3304 ATN9
25	52	20.6	0.9843	2.0472	0.8110	21.6	14.3	0.6	12 000	12 000	0.18	* 3205 A	* 3205 ATN9	
	62			25.4	2.4409	1.0000	32	20.4	0.865	11 000	11 000	0.35	* 3305 A	* 3305 ATN9
30	62	23.8	1.1811	2.4409	0.9370	30	20.4	0.865	10 000	10 000	0.29	* 3206 A	* 3206 ATN9	
	72			30.2	2.8346	1.1890	41.5	27.5	1.16	9 000	9 000	0.53	* 3306 A	* 3306 ATN9
35	72	27	1.3780	2.8346	1.0630	40	28	1.18	9 000	9 000	0.44	* 3207 A	* 3207 ATN9	
	80			34.9	3.1496	1.3740	52	35.5	1.5	8 500	8 500	0.71	* 3307 A	* 3307 ATN9
	80			34.9	3.1496	1.3740	52.7	41.5	1.76	7 500	8 000	0.79	3307 DJ1	–
40	80	30.2	1.5748	3.1496	1.1890	47.5	34	1.43	8 000	8 000	0.58	* 3208 A	* 3208 ATN9	
	90			36.5	3.5433	1.4370	64	44	1.86	7 500	7 500	1.05	* 3308 A	* 3308 ATN9
	90			36.5	3.5433	1.4370	49.4	41.5	1.76	6 700	7 000	1.2	3308 DNRCBM	–
	90			36.5	3.5433	1.4370	68.9	64	2.45	6 700	7 000	1.05	3308 DMA	3308 DTN9
45	85	30.2	1.7717	3.3465	1.1890	51	39	1.63	7 500	7 500	0.63	* 3209 A	* 3209 ATN9	
	100			39.7	3.9370	1.5630	75	53	2.24	6 700	6 700	1.4	* 3309 A	* 3309 ATN9
	100			39.7	3.9370	1.5630	61.8	52	2.2	6 000	6 300	1.5	3309 DNRCBM	–
	100			39.7	3.9370	1.5630	79.3	69.5	3	6 000	6 300	1.6	3309 DMA	–
50	90	30.2	1.9685	3.5433	1.1890	51	39	1.66	7 000	7 000	0.66	* 3210 A	* 3210 ATN9	
	110			44.4	4.3307	1.7480	90	64	2.75	6 000	6 000	1.95	* 3310 A	* 3310 ATN9
	110			44.4	4.3307	1.7480	81.9	69.5	3	5 300	5 600	1.95	3310 DNRCBM	–
	110			44.4	4.3307	1.7480	93.6	85	3.6	5 300	5 600	2.15	3310 DMA	–
55	100	33.3	2.1654	3.9370	1.3110	60	47.5	2	6 300	6 300	1.05	* 3211 A	* 3211 ATN9	
	120			49.2	4.7244	1.9370	112	81.5	3.45	5 300	5 300	2.55	* 3311 A	–
	120			49.2	4.7244	1.9370	95.6	83	3.55	4 800	5 000	2.55	3311 DNRCBM	–
	120			49.2	4.7244	1.9370	111	100	4.3	4 800	5 000	2.8	3311 DMA	–
60	110	36.5	2.3622	4.3307	1.4370	73.5	58.5	2.5	5 600	5 600	1.4	* 3212 A	* 3212 ATN9	
	130			54	5.1181	2.1260	127	95	4.05	5 000	5 000	3.25	* 3312 A	–
65	120	38.1	2.5591	4.7244	1.5000	80.6	73.5	3.1	4 500	4 800	1.75	3213 A	–	
	140			58.7	5.5118	2.3110	146	110	4.55	4 500	4 500	4.1	* 3313 A	–
	140			58.7	5.5118	2.3110	138	122	5.1	4 300	4 500	4	3313 DNRCBM	–

* SKF Explorer bearing

Sealed double row angular contact ball bearings

d 10 - 75 mm
d 0.394 - 2.953 in



Principal dimensions						Basic load ratings		Fatigue load limit P_u	Limiting speeds		Mass	Designations	
d	D	B	d	D	B	dynamic	static		Bearing with shields	seals		Bearing with shields	seals
mm			in			kN		kN	r/min		kg	–	
10	30	14	0.394	1.181	0.551	7.61	4.3	0.183	24 000	17 000	0.051	3200 A-2Z	3200 A-2RS1
12	32	15.9	0.472	1.260	0.626	10.1	5.6	0.24	22 000	15 000	0.058	3201 A-2Z	3201 A-2RS1
15	35	15.9	0.591	1.378	0.626	11.2	6.8	0.285	18 000	14 000	0.066	3202 A-2Z	3202 A-2RS1
	42	19		1.654	0.748	15.1	9.3	0.4	16 000	12 000	0.13	3302 A-2Z	3302 A-2RS1
17	40	17.5	0.669	1.575	0.689	14.3	8.8	0.365	16 000	12 000	0.1	3203 A-2Z	3203 A-2RS1
	47	22.2		1.850	0.874	21.6	12.7	0.54	14 000	11 000	0.18	3303 A-2Z	3303 A-2RS1
20	47	20.6	0.787	1.850	0.811	20	12	0.51	14 000	10 000	0.16	* 3204 A-2Z	* 3204 A-2RS1
	52	22.2		2.047	0.874	23.6	14.6	0.62	13 000	9 000	0.22	* 3304 A-2Z	* 3304 A-2RS1
25	52	20.6	0.984	2.047	0.811	21.6	14.3	0.6	12 000	8 500	0.18	* 3205 A-2Z	* 3205 A-2RS1
	62	25.4		2.441	1.000	32	20.4	0.865	11 000	7 500	0.35	* 3305 A-2Z	* 3305 A-2RS1
30	62	23.8	1.181	2.441	0.937	30	20.4	0.865	10 000	7 500	0.29	* 3206 A-2Z	* 3206 A-2RS1
	72	30.2		2.835	1.189	41.5	27.5	1.16	9 000	6 300	0.52	* 3306 A-2Z	* 3306 A-2RS1
35	72	27	1.378	2.835	1.063	40	28	1.18	9 000	6 300	0.44	* 3207 A-2Z	* 3207 A-2RS1
	80	34.9		3.150	1.374	52	35.5	1.5	8 500	6 000	0.73	* 3307 A-2Z	* 3307 A-2RS1
40	80	30.2	1.575	3.150	1.189	47.5	34	1.43	8 000	5 600	0.57	* 3208 A-2Z	* 3208 A-2RS1
	90	36.5		3.543	1.437	64	44	1.86	7 500	5 000	0.93	* 3308 A-2Z	* 3308 A-2RS1
45	85	30.2	1.772	3.346	1.189	51	39	1.63	7 500	5 300	0.63	* 3209 A-2Z	* 3209 A-2RS1
	100	39.7		3.937	1.563	75	53	2.24	6 700	4 800	1.25	* 3309 A-2Z	* 3309 A-2RS1
50	90	30.2	1.969	3.543	1.189	51	39	1.66	7 000	4 800	0.65	* 3210 A-2Z	* 3210 A-2RS1
	110	44.4		4.331	1.748	90	64	2.75	6 000	4 300	1.7	* 3310 A-2Z	* 3310 A-2RS1
55	100	33.3	2.165	3.937	1.311	60	47.5	2	6 300	4 500	0.91	* 3211 A-2Z	* 3211 A-2RS1
	120	49.2		4.724	1.937	112	81.5	3.45	5 300	3 800	2.65	* 3311 A-2Z	* 3311 A-2RS1
60	110	36.5	2.362	4.331	1.437	73.5	58.5	2.5	5 600	4 000	1.2	* 3212 A-2Z	* 3212 A-2RS1
	130	54		5.118	2.126	127	95	4.05	5 000	–	2.8	* 3312 A-2Z	–
65	120	38.1	2.559	4.724	1.500	80.6	73.5	3.1	4 800	3 600	1.75	3213 A-2Z	3213 A-2RS1
	140	58.7		5.512	2.311	146	110	4.55	4 500	–	4.1	* 3313 A-2Z	–
70	125	39.7	2.756	4.921	1.563	88.4	80	3.4	4 500	–	1.9	3214 A-2Z	–
	150	63.5		5.906	2.500	153	125	5	4 000	–	5.05	3314 A-2Z	–
75	130	41.3	2.953	5.118	1.626	95.6	88	3.75	4 500	–	2.1	3215 A-2Z	–
	160	68.3		6.299	2.689	176	140	5.5	4 000	–	5.6	* 3315 A-2Z	–

* SKF Explorer bearing