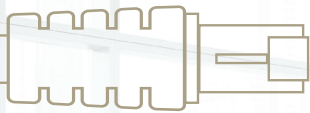





dLAN® pro 1200 DINrail



-  Secure integration in distribution boxes
-  3-phase network connection
-  Up to 1200 Mbps transfer rate (brutto)



The new gigabit Powerline bridge for DIN rails

The alternative backbone for networking – for the central integration of Powerline technology in control cabinets and distribution boxes.

Professional Powerline technology for control cabinet and distribution box integration: The dLAN® pro 1200 DINrail enables the implementation of a wide variety of scenarios, from machine-to-machine communication to comprehensive multimedia networks. The solution potential of integrating the dLAN pro 1200 DINrail into all kinds of distribution boxes in accordance with the DIN standard provides a core for building networking—every electrical socket in a building becomes a potential network jack. In addition, the dLAN® pro 1200 DINrail is also used for machine-to-

machine connections of all kinds due to the fact that machines also require network connections. The 3-phase connection to the mains supply, in combination with the MIMO technology developed by devoLO, enables exceptionally high Powerline network performance. In addition to distributing broadband Internet in buildings, the Ethernet-to-Powerline bridge is ideal for implementing projects that require special solutions for multimedia networks, building automation, energy data transmission or connecting network-capable machines.

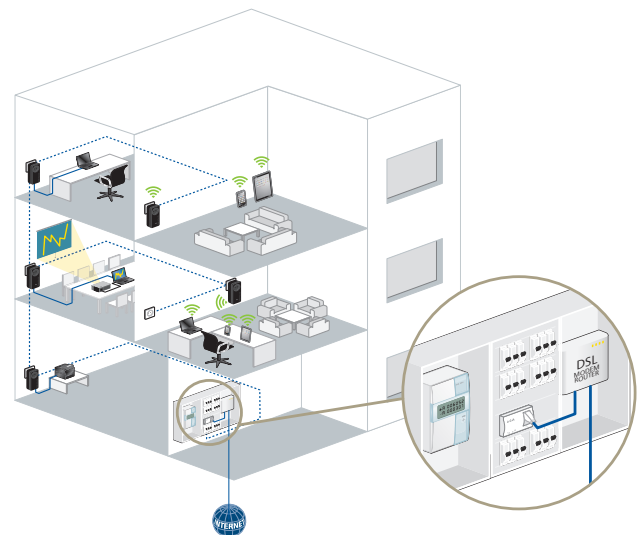
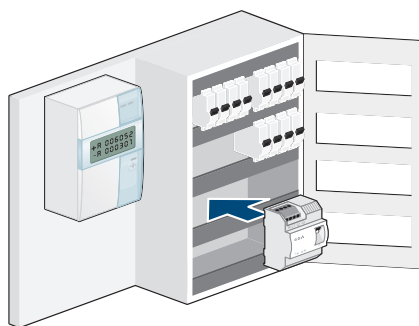
devoLO
BUSINESS SOLUTIONS



Single Powerline Bridge
Art.: 9569 (EU)

dLAN® pro 1200 DINrail Highlights:

- Ethernet-to-Powerline bridge for professional networking solutions
- 1,200 Mbps Powerline technology with MIMO transmission (also on PE)
- Maximised Powerline network performance using integrated phase coupling and patented signal coupling processes
- Secure integration in the control cabinet or distribution box on a DIN rail (DINrail – 4 sub-units) via direct installation
- Up to 400 metre range over the electrical wiring in the building
- Gigabit Ethernet port (RJ45)
- Enables extensive networking for multimedia transmission, building automation (smart home), energy data acquisition, machine-to-machine communication and much more
- Supports network architectures such as peer-to-peer or master/slave networks
- Certified in accordance with overvoltage category 3
- 3-phase/1-phase network connection (PE and N)
- Secure 128-bit AES encryption
- Professional remote management and comprehensive configuration options (via software – AVpro manager)



Do you have any questions or
a specific project?

We are happy to advise you!

Information line: +49 241-182 79 277
business@devolo.de

www.devolo.de/business-solutions

devolo
BUSINESS SOLUTIONS