

BBP12 Label Printer



The BBP12 Label Printer is an entry level benchtop label printer for cable, component, product and laboratory sample identification that offers great value for money. The compact BBP12 offers a high print speed of 100 mm/second and can handle a wide range of highly durable and specialised Brady identification labels.

There are a dozen good reasons to choose the compact benchtop entry level BBP12 Label Printer:

1. Compact in size, fits on every desk
2. Default Ethernet Connectivity, allowing you to work in a network
3. Connect any universal keyboard via USB 2.0 to work in stand-alone mode
4. Full colour LCD Display and intuitive software interface are simple to use, so no extensive training is required
5. Simple calibration menu with easy 1-2-3 step printing
6. Prints a wide range of identification labels from 6 mm up to 112 mm wide
7. Standard 300 dpi print quality allowing accurate image & barcode positioning on small labels
8. With its powerful 32 bit processor and its extended memory it can print up to 100 mm / sec
9. The printer supports the industry-standard Zebra[®] and Eltron[®] programming languages
10. Print time and date on to your labels via the "Real time clock feature"
11. Best price/quality in the market for low volume printing
12. Comes with a free unwinder accessory to print larger label rolls

Printer

Article No.	Description
195566	BBP12 Label printer 300 dpi - EU with Unwinder
195966	BBP12 Label printer 300 dpi - EU with Cutter and Unwinder
306866	BBP12 Label printer 300 dpi - EU with Unwinder and Brady Workstation LAB Suite
198595	BBP12 Label printer 300 dpi - EU with Unwinder and Brady Workstation PWID Suite
306867	BBP12 Label printer 300 dpi - EU with Cutter, Unwinder and Brady Workstation LAB Suite
195567	BBP12 Label printer 300 dpi - UK with Unwinder
195967	BBP12 Label printer 300 dpi - UK with Cutter and Unwinder
306868	BBP12 Label printer 300 dpi - UK with Unwinder and Brady Workstation LAB Suite
198600	BBP12 Label printer 300 dpi - UK with Unwinder and Brady Workstation PWID Suite
306869	BBP12 Label printer 300 dpi - UK with Cutter, Unwinder and Brady Workstation LAB Suite
195568	BBP12 Label printer 300 dpi - US with Unwinder
195968	BBP12 Label printer 300 dpi - US with Cutter and Unwinder
306870	BBP12 Label printer 300 dpi - US with Unwinder and Brady Workstation LAB Suite
198602	BBP12 Label printer 300 dpi - US with Unwinder and Brady Workstation PWID Suite
306871	BBP12 Label printer 300 dpi - US with Cutter, Unwinder and Brady Workstation LAB Suite



The Basic Suite is included with every printer, all you need to do is download it.
Workstation.BradyID.com/Free

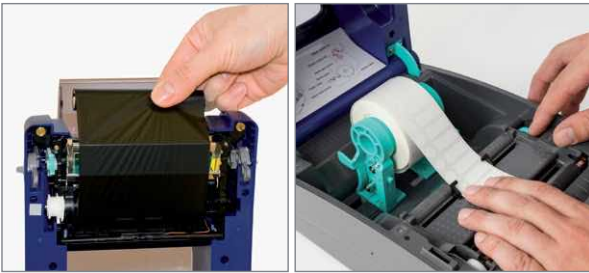


Quickly identify your products and wires with customised text or graphical labels, using serialised or imported data.
Workstation.BradyID.com/ProductandWire

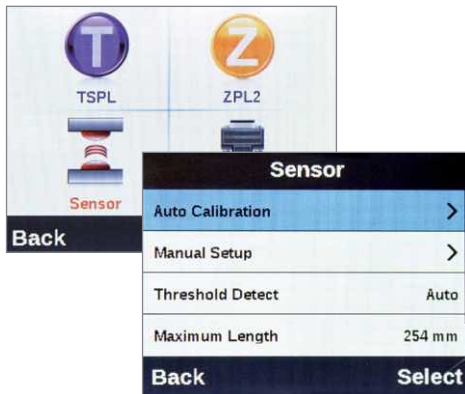


Ensure labels for all your lab samples and equipment are crisp, clear, readable and contain all necessary information. Easily design and create labels for your cryovials, centrifuge tubes, bottles, conicals, slides and other samples in your laboratory.
Workstation.BradyID.com/LAB

Ready to print in 1-2-3



Step 1: Insert media



Step 2: Calibrate via Full Colour LCD Display

Step 3: Print



Accessory

Article No.	Description
361064	BBP12/BBP11-VP - Peel & Present



Printer kits

Article No.	Description
198596	BBP12 Label printer 300 dpi - Laboratory Kit - EU
198597	BBP12 Label printer 300 dpi - Laboratory Kit - UK
198598	BBP12 Label printer 300 dpi - Laboratory Kit - US
198591	BBP12 Label printer 300 dpi - Electrical Kit - EU
198592	BBP12 Label printer 300 dpi - Electrical Kit - UK
198593	BBP12 Label printer 300 dpi - Electrical Kit - US
198588	BBP12 Label printer 300 dpi - Datacom Kit - EU
198589	BBP12 Label printer 300 dpi - Datacom Kit - UK
198590	BBP12 Label printer 300 dpi - Datacom Kit - US



Laboratory kits: This BBP12 label printer comes in a cardboard box. It ships with an unwinder, USB Cable, power cord, product CD, Quick Start Guide, Brady Workstation Laboratory ID Suite, THT-131-461-3, THT-156-492-3, THT-163-499-3, R7950 35mmx70m /O, R6400 65mmx70m / O, R4900 65mmx70m /O

Electrical kits: This BBP12 label printer comes in a cardboard box. It ships with an unwinder, USB Cable, power cord, product CD, Quick Start Guide, Brady Workstation Product and Wire ID Suite, THT-136-499-3, BPT-511-427, PS-187-2-WT-S, R4900 65mmx70m /O, R-7950 110MMX70M /O, R-6600 102MM X 74M/O

Datacom kits: This BBP12 label printer comes in a cardboard box. It ships with an unwinder, USB Cable, power cord, product CD, Quick Start Guide, Brady Workstation Product and Wire ID Suite, BPT-611-499, THT-75-427-3, BPT-5-8423-2.5, R-4900 65MMX70M /O, R-7950 65MMX70M /O, R6000HF 110MMX70M /O

Specifications

Printer	
Weight	2.50 kg
Dimensions	Size - Depth: 258 mm Size - Height: 173 mm Size - Width: 202 mm
Max. Print Width (mm)	105.60 mm
Mode of operation	Stand-Alone with external keyboard & Peripheral
Print resolution	300 dpi

Display	
Display Type	Full colour LCD display

Materials supported	
Materials	Nylon Cloth, Paper, Polyester, Polyethylene, Polyimide, Polyolefin (Sleeves), Polypropylene, Thermoplastic polyether-polyurethane, Vinyl, Vinyl Cloth, Outdoor Vinyl, Self-laminating Vinyl

Barcodes	
Barcode Type	2D and 1D (Linear)

Software & connectivity	
Connectivity	Serial, USB 2.0, Ethernet
Software Compatibility	Brady Workstation, LabelMark, CodeSoft, Windows® based driver for 3rd party software

Compliance	
Approval/Compliance	UL; cUL; CE; RoHS; EAC

Consult the video of the BBP12 Label Printer on www.bradyeurope.com/BBP12

