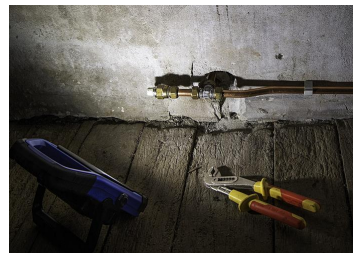
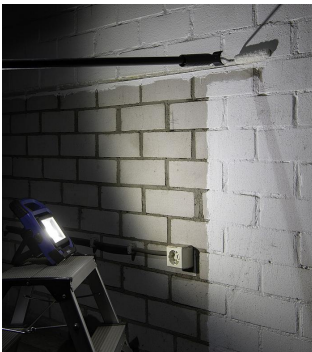
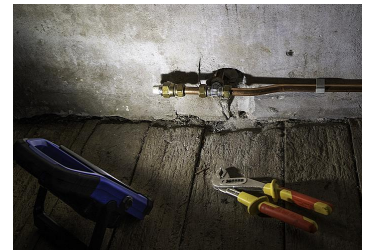


RoBust LED Portable 2.0 20W 4000K

Article number 140794

BAI RoBust LED Portable 2.0 20W 4000K 1600lm 120D Dimmer switch (Brightness 0-60-100%) IP44 Blue housing Magnets USB Exchangeable battery Chargers

Portable construction lamp with battery. Strong IP44 polycarbonate housing with anti-slip and impact-resistant rubber coating. Adjustable stand for stable placement, magnets, tempered glass and orientable. Replaceable battery with switch button (100% - 60% - 0%), battery indicator, USB output 5V 1A, high capacity lithium batteries and 230V and 12V chargers.



General ETIM properties

ETIM group	Luminaires
ETIM class	Building site lighting luminaire
Name	140794
Brand	Bailey
Productseries	Work lighting
Product type	LED RoBust Portable

ETIM specifications

Connection type	Other
Type of wiring	Ending
Colour rendering index CRI	80-89
Colour temperature [K]	4000 - 4000
Colour of light	White
Rated luminous flux according to IEC 62722-2-1 [lm]	1600
Max. system power [W]	20
Suitable for lamp power [W]	12 - 20
Impact strength	IK08
Protection class	III
Degree of protection (NEMA)	Other
Degree of protection (IP)	IP44
Rated life time L70/B50 at 25 °C [h]	30000
Energy efficiency class of the built-in lamp	A++, A+, A (LED)
Nominal voltage [V]	7.4 - 7.4
With socket outlet	No
With protective cover	No
With stand holder	Yes
With wheels	No
Material housing	Plastic
Lamp holder	Other
Suitable for number of lamps	1
With light source	Yes
Lamp type	LED not exchangeable

Alternative articles



90500034260

LED Portable Green
DIM 20W 1800lm
4000K