

Aluplan

Aluplan AP 5.... enclosure profile set



AP 52025

Order no.: 64052025

* = Available on request.

Characteristics

Colour of enclosure group

Black, similar to RAL 9005

Protection class

IP 65

Enclosure Material

Extruded profiles: Al Mg Si 0.5 powder-coated; corners: diecast zinc ZnAl 4 Cu 1, powder-coated; corner caps: PA-GF 15, corner seal TPV/TPE; sponge rubber seal (EPDM) in profile groove; for details see Technical Information

Scope of delivery

2 front profiles including seal, 2 side profiles including seal, 4 diecast corners, 4 corner seals, 4 covers, 16 screws, 4 rubber feet. Please order front panels separately.

Note

The smooth outer surface of the front profiles can be used to fit membranes or membrane keypads.

Determination of dimensions for AP 50 profile cuts (special dimensions):

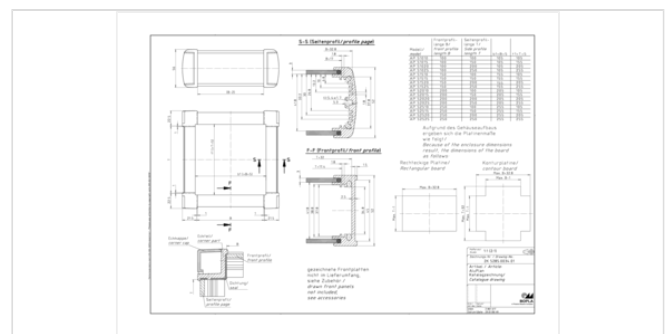
Length of AP 50 front profile = dim. A - 43 mm

Dimensions

Dimensions

243 x 295 x 56 mm

Product drawing



Length of AP 50 side profile = dim. B - 45 mm

Important!

To compensate for pressure when temperatures change and cause moisture in the enclosure, we recommend that you use a pressure compensation element.

» Additional information

Technical documentation / Downloads

Technical drawings

3D product data in STEP format: Registration necessary
Product drawing in PDF format: 64052025 AP-52025.pdf (109.2 KB)
Product drawing in DXF format: 64052025 AP-52025.dxf (704.4 KB)
Drawing for mechanical processing: 64052025 AP-52025-G.dxf (827.5 KB)

Milling contours are shown here as a DXF file. (Sub D, USB, HDMI, cable glands, ...)

Product information

Aluplan GB.pdf (428.9 KB)

Assembly Instructions

Aluplan AP-100 Gehaeusemontage Enclosure Assembly 64950163.pdf (595.0 KB)

Matching accessories



Handle for AP 5...

64110020 AP 20 HS

For side / front profile length 200 mm

64110025 AP 25 HS

For side / front profile length 250 mm



Wall brackets for AP 5...

64115000 AP 50000 WL

For wall mounting parallel to the front panel

64115010 AP 50000 WLS

For wall mounting on side profile

64115020 AP 50000 WLF

For wall mounting to the front profile



Front panels for AP 5..., 3 mm, natural coloured anodised aluminium

64102025 AP 02025 FA3

For AP 52025



Tip-up feet, polyamide

39603000 AB 1230

Including 4 sheet metal screws