


PCB TERMINAL BLOCKS

5mm DIN Rail Mounted Inverted/Reverse

- Horizontal orientations
- Polarized moldings
- Can be reversed on DIN clips
- Also available in 5.08mm pitch
- Molded in green UL94-V0 flame retardant PA 66
- 2.5mm² (28-14AWG)
-  approved
- 6-12 poles standard (13-24 also available)

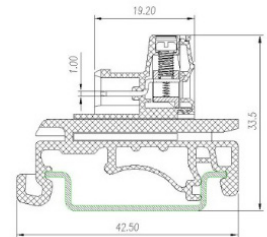
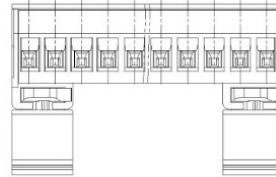
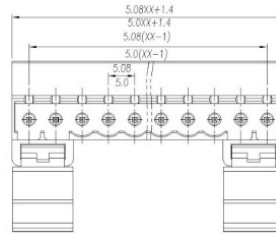
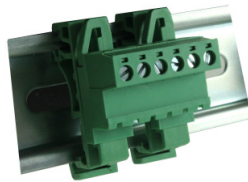
SPECIFICATION

Rating	UL=15A/300V IEC 20A/450V
Insulation resistance	500MΩ/500V
Withstand Voltage	AC2000V/1min
Contact Resistance	20mΩ (max)
Working Temperature	-40°C to 105+°C
Mouldings	UL94-V0 Flame retardant PA66
Pin/Terminal	Brass, Tin plated
Rising Clamp	Brass, nickel plated
Screw/Torque	M3 Steel, zinc plated 0.5Nm

DIN Rail PCB Mounting Female Horizontal

CTBPD96HG

TYPE NO.	POLES	LENGTH
CTBPD96HG/6	6	32.48mm
CTBPD96HG/7	7	37.56mm
CTBPD96HG/8	8	42.64mm
CTBPD96HG/9	9	47.72mm
CTBPD96HG/10	10	52.8mm
CTBPD96HG/11	11	57.88mm
CTBPD96HG/12	12	62.96mm



DIN Rail PCB Mounting Female Horizontal, Flanged

TYPE NO.	POLES	LENGTH A	LENGTH B
CTBPD96HG/6FL	6	32.48mm	40.64mm
CTBPD96HG/7FL	7	37.56mm	45.72mm
CTBPD96HG/8FL	8	42.64mm	50.8mm
CTBPD96HG/9FL	9	47.72mm	55.88mm
CTBPD96HG/10FL	10	52.8mm	60.96mm
CTBPD96HG/11FL	11	57.88mm	66.04mm
CTBPD96HG/12FL	12	62.96mm	71.12mm

CTBPD96HG/FL

