

# DEVELOPMENT BOARD ENCLOSURES

## RASPBERRY PI STYLE ENCLOSURES

### DIN Rail Pi B+ Enclosures

UNIVERSAL  
ENCLOSURES

HAND  
HELD  
CASES

HEAVY  
DUTY  
ENCLOSURES

DIN  
RAIL  
BOXES

INTERFACE  
SUPPORTS

CONTROL  
STATIONS

DIECAST  
& METAL  
BOXES

DESKTOP &  
INSTRUMENT  
CASES

POTTING  
BOXES

19"  
ENCLOSURES

19"  
CABINETS

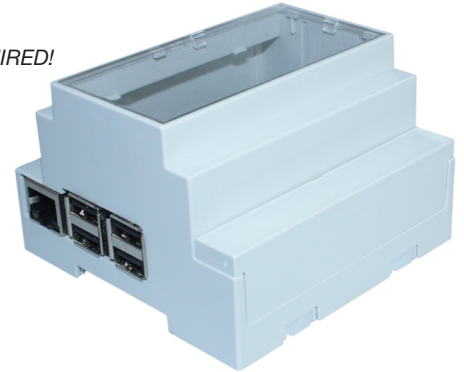
DEVELOPMENT  
BOARD  
ENCLOSURES

CUSTOM  
SIZED  
ENCLOSURES

CUSTOM  
SERVICES

No screws, no glue – just add your **Raspberry Pi** filling!

- Designed to house the **Raspberry Pi B+ or Pi 2** via clip-in design - **NO SCREWS REQUIRED!**
- All cut-outs are pre-cut into the case - **NO MODS REQUIRED!**
- I/O Connector can be accessed through the terminal guard
- Slot for display ribbon cable
- DIN rail mountable
- Wall mountable
- Moulded in PC (Polycarbonate)
- L 88mm x W 90mm x H 58mm



Raspberry Pi B+ or Pi 2 PCB not included



CB PART NO.	LID COLOUR
CBRPP-DR-CLR	Crystal Clear
CBRPP-DR-GRY	Grey