

19" CABINETS

CamRack-SX

UNIVERSAL ENCLOSURES

7U Wall mounted cabinets, designed for SOHO (Small Office, Home Office) installations
Assembled in **3 minutes!**

HAND HELD CASES

- Delivered flat packed for ease of access to all installations. Also reduces associated logistic costs and offers greater protection during transit.
- Fast and efficient assembly without tools.

HEAVY DUTY ENCLOSURES

- 2x mounting profiles. Variable depth, in 20mm increments. Numbered "U's" optional.

DIN RAIL ENCLOSURES

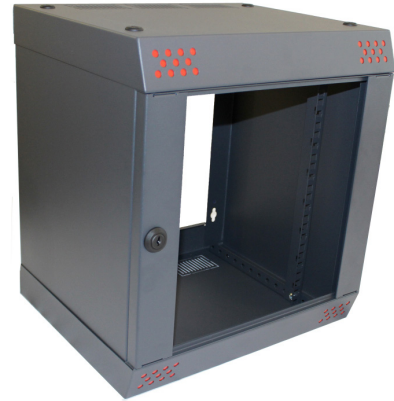
- Fast fixings 1/4 turn locks.
- Front door. Tempered, smoked safety glass.
- No rear panel or door.
- Cable entry options for the top panels.
- Cantilever tray supplied.

INTERFACE SUPPORTS

- Template for wall mounting included.
- Distributed recommended load capacity: 40 Kg

CONTROL STATIONS

- Finishes: RAL 7016, Dark grey, anthracite (See below for corner options)



DIECAST & METAL ENCLOSURES

DESKTOP & INSTRUMENT CASES

MULTI-PURPOSE & POTTING BOXES

19" ENCLOSURES

19" CABINETS

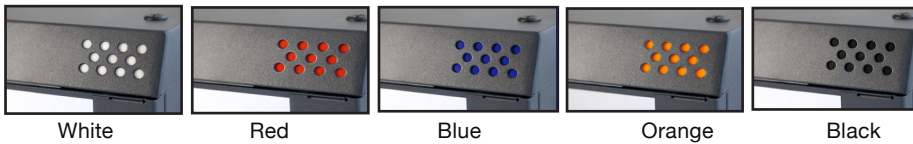
DEVELOPMENT BOARD ENCLOSURES

CUSTOM SIZED ENCLOSURES

FSPT/CUSTOM SERVICES

RED	BLUE	ORANGE	WHITE	BLACK	U	WIDTH	DEPTH	HEIGHT
CSX073211	CSX073212	CSX073213	CSX073214	CSX073215	7U	377mm	315mm	420mm

- **Standard corner colours:**



White

Red

Blue

Orange

Black

- **Other corner colours available upon request:**



Yellow

Green

Purple

Lilac

Grey

