

Touch, Test, Invent®

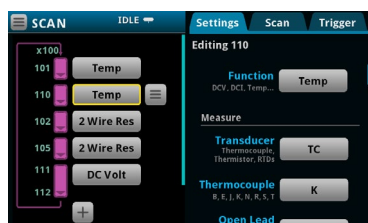
Combining Touchscreen Productivity with 15 Measurement Functions, Greater Sensitivity, and More Connectivity



DAQ6510 DATA ACQUISITION AND LOGGING MULTIMETER SYSTEM

Creating a new level of simplicity, the DAQ6510 touchscreen user interface enables faster setup time, real time monitoring of test status, and detailed data analysis on the instrument.

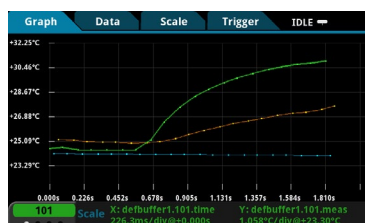
Set Up, Execute and Monitor, and Analyze Multi-Channel Measurements Quickly



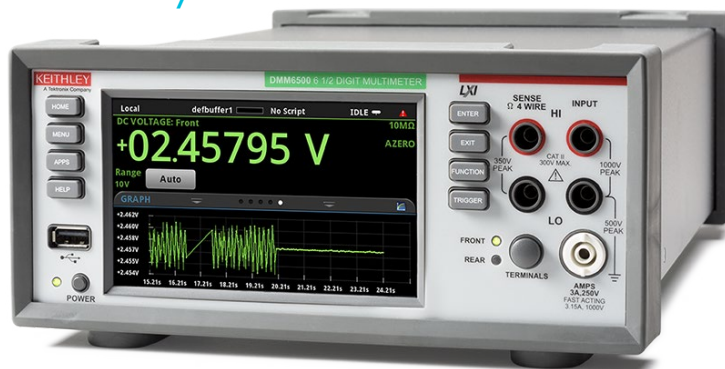
Set Up



Monitor



Analyze



DMM6500 6½-DIGIT BENCH/ SYSTEM DIGITAL MULTIMETER

The DMM6500 offers more measurement capability – including waveform capture, data visualization, and analysis – at a great price.

15 Built-In Measurement Functions and Increased Sensitivity for a Wider Range of Measurements

- 100 nV-1000 V with 0.0025% basic DCV accuracy
- 1 $\mu\Omega$ -120 M Ω
- 10 pA-10 A
- 0.1 pA-100 μ F
- 1 Msample/s 16-bit digitizing



The DMM6500 offers more current and resistance sensitivity to test new low power devices used in IoT and other low power products.

DAQ6510 Data Acquisition and Logging Multimeter System

Select from 12 optional 7700 Series Plug-in Switch Modules for a wide range of tests

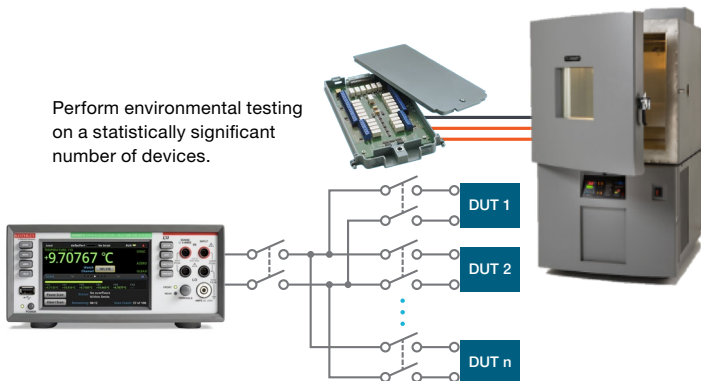


Up to 80, 2-pole multiplexed channel capacity



Rear panel of DAQ6510 showing two slots for 7700 Series Plug-in Switch Modules.

Perform environmental testing on a statistically significant number of devices.

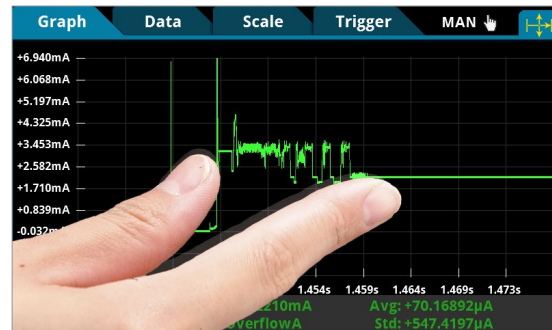


Built-in 6½-digit DMM for High Performance Measurements

- Use as DMM with the front panel input jacks

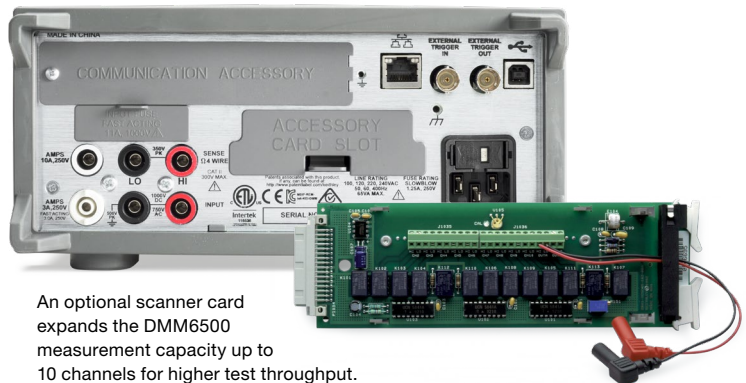
DMM6500 6½-Digit Bench/System Digital Multimeter

Capture and analyze complex waveforms and transients on the touchscreen display for faster measurement insights



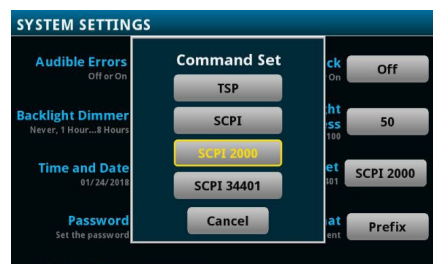
Use pinch and zoom control, cursors, and statistics for thorough waveform analysis.

Greater test throughput



An optional scanner card expands the DMM6500 measurement capacity up to 10 channels for higher test throughput.

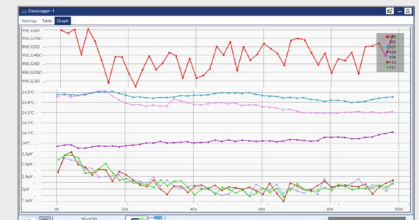
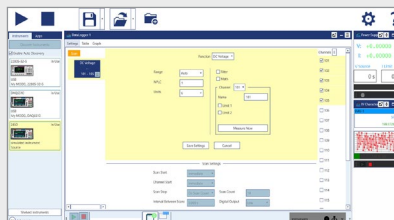
Upgrade hardware, not software



The DMM6500 emulates the Keithley 2000 and Keysight 34401A, so there's no need to change your existing test code.

Use KickStart Software for point-and-click PC programming and for multiple instrument control

KickStart's datalogger application lets you easily configure channels, set measurement parameters such as limits and trigger sources, and view results while the test is executing. Learn more about KickStart's other applications, including its DMM application, at www.Tek.com/Keithley-KickStart



Find more valuable resources at TEK.COM

Copyright © 2018, Tektronix. All rights reserved. Tektronix products are covered by U.S. and foreign patents, issued and pending. Information in this publication supersedes that in all previously published material. Specification and price change privileges reserved. TEKTRONIX and TEK are registered trademarks of Tektronix, Inc. All other trade names referenced are the service marks, trademarks or registered trademarks of their respective companies.

042518.sbg 1KW-61384-0

