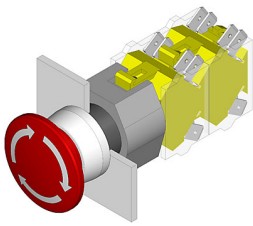


# EAO – Your Expert Partner for Human Machine Interfaces

## 704.075.2 - Stop switch actuator

### 704.075.2 - Stop switch actuator



*Attention: The preview is based on a sample product. This can differ from your current configuration.*

#### Mounting

Mounting cut-out  
Design  $\varnothing$  22,3 mm raised

#### Front

Front ring material Aluminium  
Front shape round  
Front dimension  $\varnothing$  40 mm  
Front ring colour natural anodized

#### Other Attributes

Marking Arrows  
Weight 0,047 kg

#### Operating-/Indication part

Lens material Plastic  
Lens optics opaque  
Lens profile Mushroom  
Lens colour red  
Lens illumination non-illuminative

#### IP-Rating

Front protection IP65

#### Actuator

Switching action Maintained

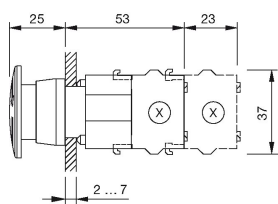
#### Function

Stop switch

# EAO – Your Expert Partner for Human Machine Interfaces

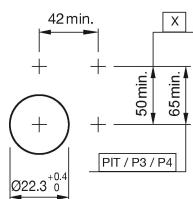
704.075.2 - Stop switch actuator

## Dimensions



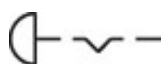
X = Screw terminal

## Mounting cut-outs



PIT = Push-in terminal

## Wiring diagram



## Additional information

Twist to unlock clockwise

Max. 3 switching elements can be clipped on

The colour of anodized aluminium parts can vary due to technical production reasons

## Legend

Switching action: C = Maintained