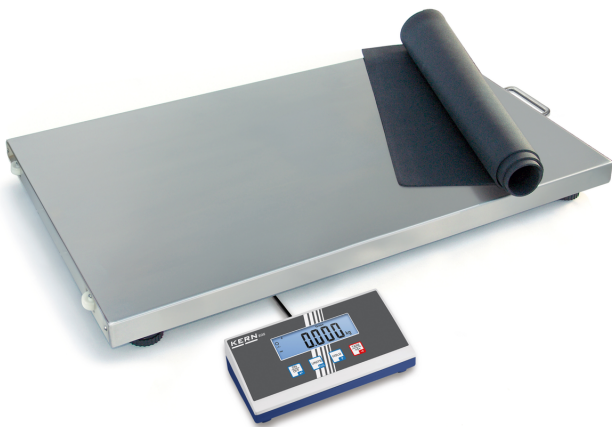


KERN EOS 150K50XL

KERN

Heavy duty parcel and veterinary platform scale with extra large stainless steel weighing plate



Dimensions weighing platform (W×D×H) 950×500×58 mm

Material housing plastic

Material display housing Plastics

Material weighing plate stainless steel

Material platform metal, lacquered, with black mat

Display device cable length 2,7 m

Levelling feet adjustable ✓

Functions

Number of keys for operation 4

Auto-off interval(s) in mains power mode off

Auto-off interval(s) in battery mode/rechargeable battery mode off 1 min - 99 min

Tare function manual (multi)

Hold function ✓

Function for averaging under unstable weighing conditions ✓

Underfloor weighing None

IP protection - complete device -

IP protection - display no IP protection

IP protection - load cell no IP protection

IP protection - platform no IP protection

Power Supply

Input voltage power supply / power [Max] 100 V - 240 V, 50 / 60 Hz

Plug-in power supply type Power adapter

Supplied plug-in power supply Power supply unit

Plug-in power supply / adapter for countries - included with the delivery EURO AUS UK US CH

Plug-in power supply / adapter for countries - optional EURO UK US CH

Battery 4×1.5 V AA

Battery operating time 60 h

Environmental conditions

Ambient temperature [Min] 5 °C

Ambient temperature [Max] 35 °C

Packing & Shipping

Readability force [d] (N) 1 d

Shipping method Parcel service

Dimensions packaging (W×D×H) 1140×640×80 mm

Net weight approx. 19 kg

Category

| | |
|------------------|-------------------|
| Brand | KERN |
| Product category | Industrial scales |
| Product group | Platform scales |

Measuring System

| | |
|--------------------------------|--------------------------------|
| Readability [d] | 50 g |
| Weighing capacity [Max] | 150 kg |
| Eccentric loading at 1/3 [Max] | 0,15 kg |
| Reproducibility | 0,05 kg |
| Linearity | ± 0,1 kg |
| Weighing system | Strain gauge |
| Resolution | 3.000 |
| Tare range | 150 kg |
| Units | kg lb PCS |
| Default unit | kg |
| Stabilization time | 3 s |
| Warm-up time | 10 min |
| Adjustment options | Adjusting with external weight |
| Recommended adjusting weight | 100 kg (M2) |
| Possible calibration points | 100 kg |

Approval

CE mark ✓

Display

Display digit height 25 mm

Display backlight ✓

Construction

Dimension display device (W×D×H) 235×114×51 mm

KERN EOS 150K50XL



Heavy duty parcel and veterinary platform scale with extra large stainless steel weighing plate

| | |
|----------------------|---------|
| Gross weight approx. | 20 kg |
| Shipping weight | 19,5 kg |

Services (optional)

| | |
|---------------------------------------------------------------|---------|
| Article number for adjustment at the location of installation | 961-249 |
| Article number for DAkkS calibration | 963-129 |
| Article number for certificate of conformity (verification) | 969-517 |

Piktogramme

STANDARD



OPTION

