




Float switch

Part no. SW
Catalog No. 088594
Eaton Catalog No. SW
EL-Nummer (Norway) 0004356150

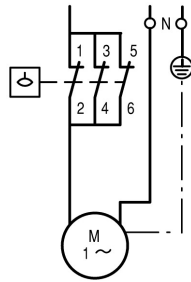
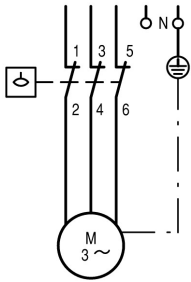
Delivery program

Product range		Float switch
Degree of Protection		IP65
		Lever can be turned to reverse contact effect
		1 insulated protective conductor terminal 
		1 insulated N terminal
		Impact-resistant shroud, green
		2 cable entry knockouts for M20, without cable gland
		IP65 in conjunction with V-M20 cable gland
		Wall mounting bracket
		Can be mounted in any position

Notes

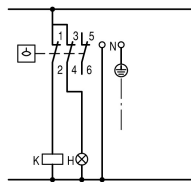
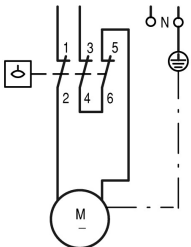
For use as a motor load switch for:
 Three-phase current AC-3

Single-phase current



Direct current DC

For use as control switch:



Parts:

Float, operating rod, and wire rope sleeve made of especially resistant plastic.

Resistant to:

- Tap water, river water, salt water: Max. 100 °C
- Deionized water: Max. 100 °C
- Brine: Max. 100 °C
- Acids (10%): Max. 40 °C
- Bases (10%): Max. 40 °C

Operation:

Minimum operation at lever: 24 mm

Technical data

General		
Standards		IEC/EN 60947-4-1
Operating frequency	Operations/h	≤ 1500
Ambient temperature		-25 - 70
Degree of Protection		IP65
Mounting position		As required
Mechanical shock resistance to IEC 60068-2-27	Half-sinusoidal shock 20 ms	g > 10

Vibration resistance acc. to IEC/EN 60068-2-6	Amplitude 1 mm	Hz	36
lifespan	Operations	x 10 ⁶	0.5
Terminal capacities		mm ²	
Solid		mm ²	1 x (0.75 - 2.5) 2 x (0.75 - 1.5)
Flexible with ferrules to DIN 46228		mm ²	1 x (0.5 - 1.5) 2 x (0.5 - 1.5)
Terminations			Flat terminal with clamping washer
Terminal screw			M4
Tightening torque of terminal screw		Nm	1.2

Contacts/switching capacity

Rated impulse withstand voltage	U _{imp}	V AC	4000
Rated insulation voltage	U _i	V	400
Overvoltage category/pollution degree			III/3
Max. short-circuit protective device			
Fuseless		Type	PKZM0-20
Fuse	gG/gL	A	20
Type of coordination			1
Rated short-circuit current	I _q (= Current r)	kA	1
AC-3			
Rated operational current			
230 V		A	15
400 V		A	11.5
Rated power P			
230 V		kW	4
400 V		kW	5.5
Rated frequency	f	Hz	50

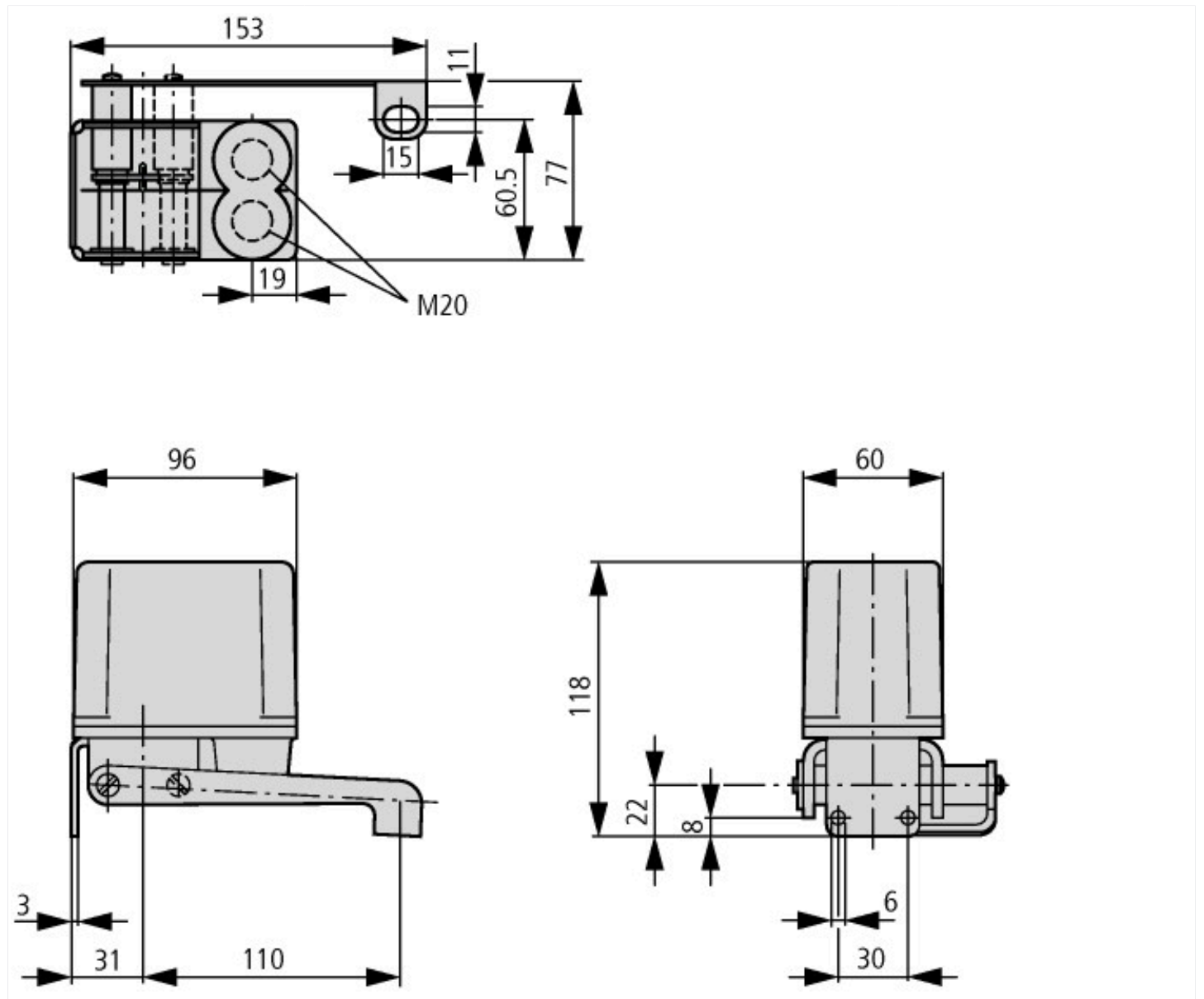
Design verification as per IEC/EN 61439

Technical data for design verification			
Operating ambient temperature min.		°C	-25
Operating ambient temperature max.		°C	70

Technical data ETIM 7.0

Low-voltage industrial components (EG000017) / Accessories for control circuit devices (EC002024)			
Type of electrical accessory			Other
Type of mechanical accessory			Other

Dimensions



Additional product information (links)

IL05212002Z (AWA133-135) Float switch

IL05212002Z (AWA133-135) Float switch

ftp://ftp.moeller.net/DOCUMENTATION/AWA_INSTRUCTIONS/IL05212002Z2018_06.pdf