

# ENSTO

**PRODUCT SPECIFICATION**

3/12/2018



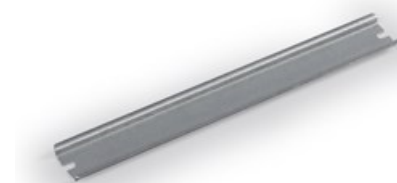
6418677151071

DR35160.4

**DIN rail**


---

Code DR35160.4  
 GTIN 6418677151071  
 ENumber  
 Name DIN rail Ensto Cubo D  
 DIN rail, length 170 mm, width 35 mm, DIN 46277/3, galvanized steel  
 Description Accessory for Ensto Cubo D thermoplastic enclosures  
 Vendor Ensto Finland Oy


**Technical specification**


---

**Dimensions**

**Weight:** 0.06 kg  
**Volume :** 4.34 cm<sup>3</sup>  
**Size:** 35 x 170

**Materials**

**Material:** Galvanized steel

**Ratings**

**ETIM 7:** EC001285 Mounting rail

**ETIM**


---

**ETIM**

**Punch shape:** None  
**Material thickness:** 1 mm  
**Drill hole distance centrally:** 160 mm  
**Height:** 7.5 mm  
**Surface finishing:** Galvanized  
**Material:** Stainless steel  
**Model:** DIN rail (top hat rail) 35/7.5 mm  
**Length:** 170 mm

## Packaging

---

### Default package

<b>Unit:</b>	PCS
<b>Size:</b>	10
<b>Length:</b>	40 mm
<b>Width:</b>	100 mm
<b>Height:</b>	220 mm
<b>Weight (net):</b>	0.55 kg
<b>Weight (brt):</b>	1.082 kg
<b>Volume:</b>	0.88