

# ENSTO

**PRODUCT SPECIFICATION**

3/12/2018



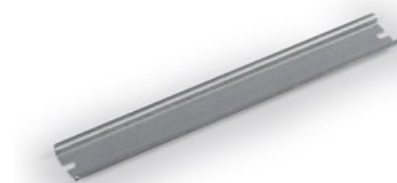
6418677151101

DR35275.4

**DIN rail**


---

Code DR35275.4  
 GTIN 6418677151101  
 ENumber  
 Name DIN rail Ensto Cubo D  
 DIN rail, length 285 mm, width 35 mm, DIN 46277/3, galvanized steel  
 Description Accessory for Ensto Cubo D thermoplastic enclosures  
 Vendor Ensto Finland Oy


**Technical specification**


---

**Dimensions**

**Weight:** 0.09 kg  
**Volume :** 7.28 cm<sup>3</sup>  
**Size:** 35 x 285

**Materials**

**Material:** Galvanized steel

**Ratings**

**ETIM 7:** EC001285 Mounting rail

**ETIM**


---

**ETIM**

**Punch shape:** None  
**Material thickness:** 1 mm  
**Drill hole distance centrally:** 275 mm  
**Height:** 7.5 mm  
**Surface finishing:** Galvanized  
**Material:** Stainless steel  
**Model:** DIN rail (top hat rail) 35/7.5 mm  
**Length:** 185 mm

## Packaging

---

### Default package

<b>Unit:</b>	PCS
<b>Size:</b>	10
<b>Length:</b>	40 mm
<b>Width:</b>	100 mm
<b>Height:</b>	320 mm
<b>Weight (net):</b>	0.93 kg
<b>Weight (brt):</b>	1.86 kg
<b>Volume:</b>	1.28