

Category 5e & 6 Inline Coupler



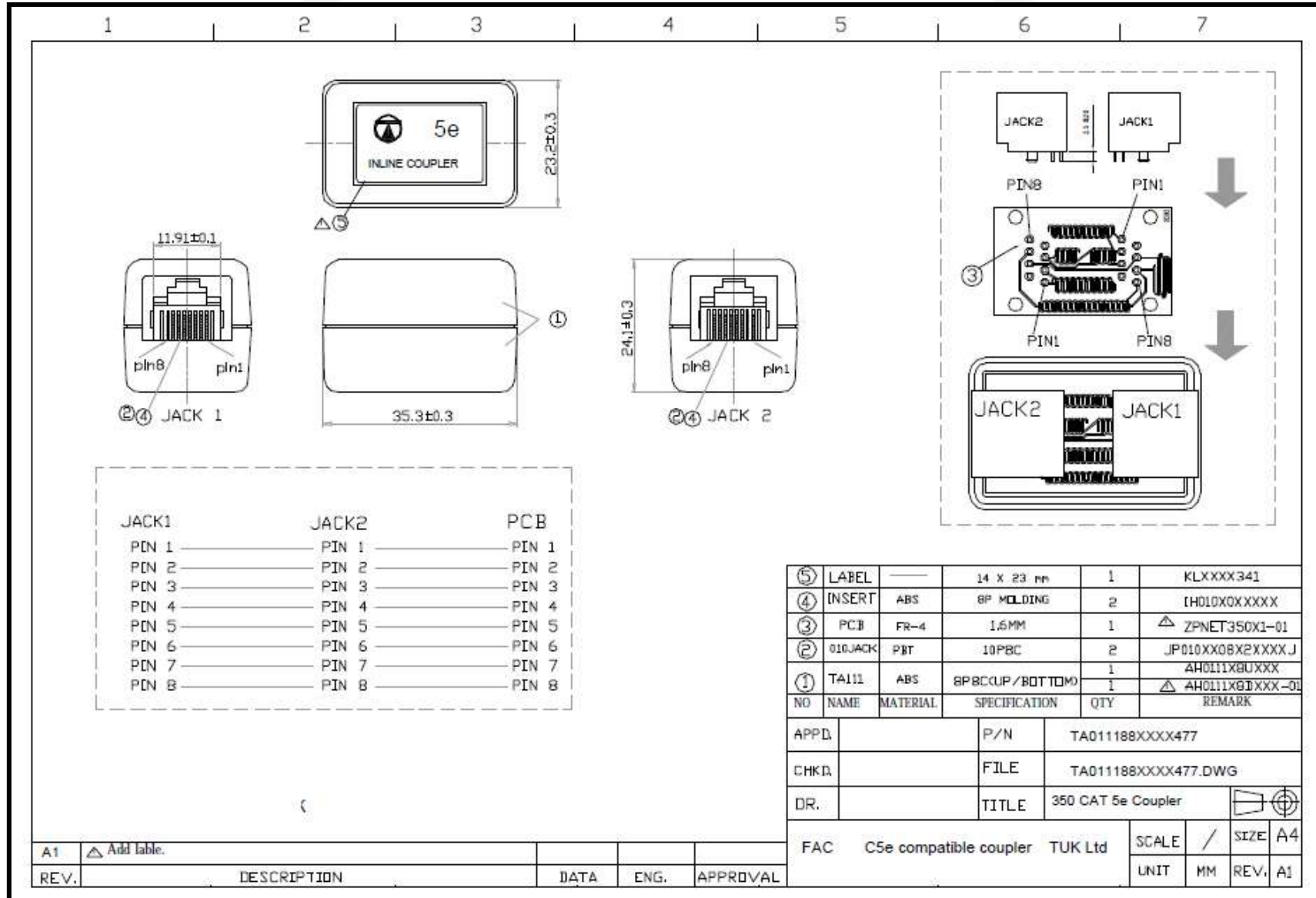
Category 5e & Category 6 Inline Coupler (FACbk + FACwh + FACnl + SAC)

Features

- High performance data throughput, meet Category 5e / Category 6 data transfer rates
- Robust & compact design
- Category 5e available in white, black, with or without label (note: no label product is more compact)
- Shielded versions also available
- Operating temperature range: -25°C~+55°C

Specifications

- Dimensions: 35 x 24 x 23mm (approx)
- Case: UL-94V-0 ABS
- Gold Plating: 6µ" + gold 0.8 µ"/0.02µm
- PCB: UL approved FR-4
- Colour: Black (FACBk) or white (FACWh + SAC)



TUK Ltd, Unit 4, Wimbledon Stadium Business Centre, Riverside Road, London, SW17 0BA

