

TECHNICAL DATA

Fluke TruTest™ Data Management and Reporting software



STREAMLINED DATA MANAGEMENT

Manage test results, client and site data with ease, and create reports quickly using the intuitive user interface and custom-report builder

CREATE CUSTOM AUTO-TESTS

Choose from pre-defined automatic test codes, or create your own to ensure technicians gather the right data at the right site

DASHBOARD INTERFACE

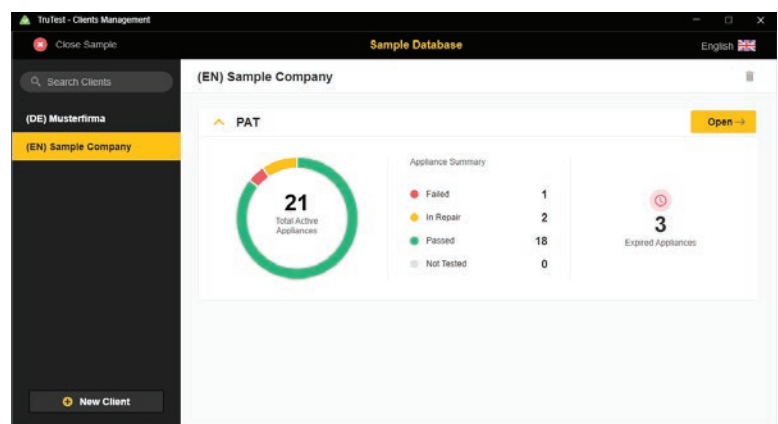
Live on-screen intuitive dashboard interface allows the user to see the status of all their clients instantly and navigate to further levels of detail if desired

The easy-to-use data management solution

Fluke TruTest Software is designed to eliminate the hassle associated with traditional electrical system data management and reporting. Whether you are testing appliances in an office, verifying repairs in a workshop, or performing annual inspections proper data management is critical for producing easy-to-understand reports for clients. Compatible with a growing list of Fluke and Beha-Amprobe test and measurement devices TruTest Software allows you to quickly and easily import measurement results directly from your test instruments, manage files transferred from instruments, or manually enter data as needed.

With a streamlined user interface and intuitive workflow, measurement data can be easily formatted into printable test certificates and reports complete with your company logo and electronic signature.

- Easily manage measurement data
- Quickly create test certificates and reports
- Free updates for 5 years after installation
- Easy data collection and database transfers
- Enables manual data entry
- Intuitive user interface
- Fast and simple operations



TruTest Software Active Appliance Report



Compatibility

TruTest™ is compatible with a growing list of Fluke and Beha-Amprobe test instruments including the following Portable Appliance Testers.

- Fluke 6500
- Fluke 6500-2
- Beha-Amprobe GT-600
- Beha-Amprobe GT-650
- Beha-Amprobe GT-800
- Beha-Amprobe GT-900

Databases from the Fluke DMS Software or Beha-Amprobe ES Control software can also be converted and transferred to the TruTest Software platform. Microsoft Access Runtime 2016 is required for the DMS/EsControl database conversion.

Tree topology

Hierarchical tree topology is used to represent clients, sites, locations and appliances, making it ideal for use in larger networks while allowing you to maintain testing and reporting flexibility. Each element is presented as a single tree node and the properties of each node are presented after selection. Tree topology can be maintained by adding nodes, deleting nodes, duplicating nodes, duplicating subtrees and node editing.

Demo software and software packages

Free demonstration software is available at www.fluke.com/trutestsoftware. After downloading start the installation by double clicking on the software file. The setup program will guide you through the installation procedure. Please follow the installation instructions displayed on the screen.

After purchasing TruTest Lite or TruTest Advanced, you will be provided with a code that will give you full access to the features purchased.

Specifications

Function	Demo	Lite	Advanced
Database structure (Local standalone or server based)	Local	Local	Local
PAT module	•	•	•
PATs supported	Fluke 6500, Fluke 6500-2, Beha-Amprobe GT-600, Beha-Amprobe GT-650, Beha-Amprobe GT-800, Beha-Amprobe GT-900		
Maximum addable clients	1	2	Unlimited
Maximum addable sites/client	2	5	Unlimited
Maximum addable locations/client	5	50	Unlimited
Maximum addable appliances/client	20	1000	Unlimited
Include demo database	•	•	•
Create clients	•	•	•
Rename clients	•	•	•
Delete clients	•	•	•

Specifications (continued)

Create nodes	•	•	•
Move nodes	•	•	•
Rename nodes		•	•
Delete nodes	•	•	•
Client Information			
Edit client information		•	•
Edit site information		•	•
Edit location information		•	•
Edit appliance information		•	•
Edit test information		•	•
Test Steps			
Add test step		•	•
Delete test step		•	•
Edit test step		•	•
Remarks			
Add remarks		•	•
Add attachment (file) to remark			•
Edit remark		•	•
Delete remark		•	•
Data Management			
Read data from instrument	•	•	•
Read data from file	•	•	•
Read data conflict management	•	•	•
Read data assign tree structure	•	•	•
Load data to instrument			•*
Search			
Use search	•	•	•
Reporting			
Show reports	With watermark	•	•
Show certificates	With watermark	•	•
Save (PDF, XML,...) /Print reports		•	•
Save (PDF, XML,...)/Print certificates		•	•
Users			
Add engineers	Demo engineer	•	•
Edit engineers		•	•
Delete engineers		•	•
Print engineers		•	•
Test Instruments			
Add test instruments	Demo instrument	•	•
Edit test instruments		•	•
Delete test instruments		•	•
Print test instruments		•	•
Company Information			
Edit my company info	Demo company	•	•
Edit company logo	Demo logo		•
Edit certification logo	Demo logo		•
Auto Test Codes			
View Auto Test Codes	•	•	•
Select favorites Auto Test Codes		•	•

* Compatible tool required

Print favorites Auto Test Codes		•	•
Print All Auto Test Codes		•	•
Create customized Auto Test Codes			•
Edit customized Auto Test Codes			•
Copy customized Auto Test Codes			•
Delete customized Auto Test Codes			•
Print Customized Auto Test Codes			•
Backup			
Create backup		•	•
Restore backup		•	•
User Management			
Maximum users	1 Demo user	2	Unlimited
Add users		•	•
Edit users		•	•
User roles		•	•
Edit user roles		•	•
Print users list		•	•
System Settings			
Edit limits		•	•
Available languages	EN, DE	EN, DE	EN, DE
Change language	•	•	•
Change country	•	•	•
Change report language			•
Expiration			
Expire duration	60 days (calculated from installation date)	Unlimited	
Free updates		5 years (calculated from enter serial code date)	
Expiration popup notice	Daily	Every 30 days after 5 year free update period	
Activation date with days left until expiration	•	•	•

System requirements

Type	Requirement
Operating System	<ul style="list-style-type: none"> • Microsoft Windows 10, 64-bit and 32-bit (recommended) • Microsoft Windows 8/8.1, 64-bit and 32-bit • Microsoft Windows 7 with Service Pack 1, 64-bit and 32-bit
System Memory	Minimum 4 GB RAM (64-bit) or 2 GB RAM (32-bit)
Hard disk space:	Minimum 2 GB available hard disk space,
Display resolution:	Minimum screen resolution 1366 x 768
Communication interfaces:	USB

Ordering information

FLK-TRUTEST-LITE Software

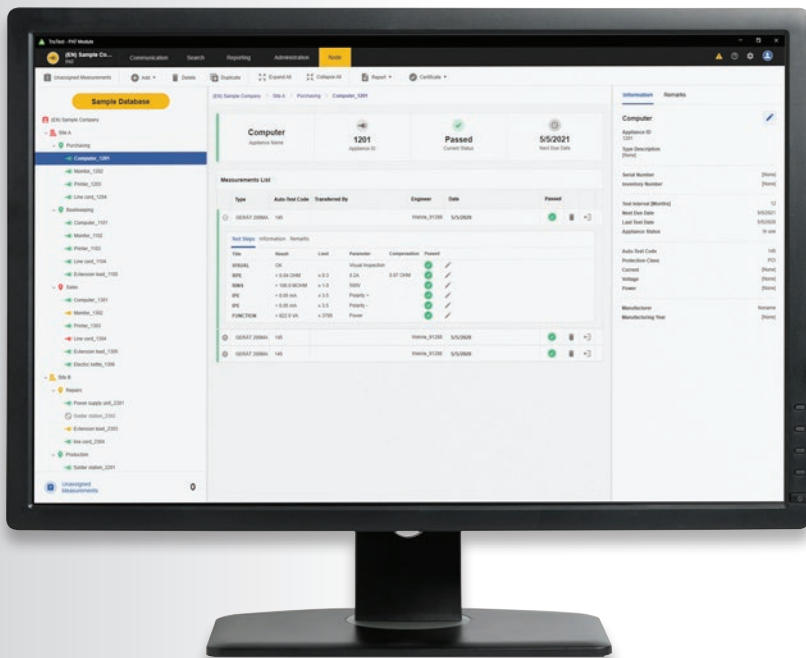
TruTest Lite Software Package license code

FLK-TRUTEST-ADV Software

TruTest Advanced Software Package with enhanced functionality license code

FLK-TRUTEST-CD Software Disc

TruTest Software disc. License code sold separately.



Fluke. *Keeping your world up and running.*®

Fluke Corporation

PO Box 9090, Everett, WA 98206 U.S.A.

Fluke Europe B.V.

PO Box 1186, 5602 BD Eindhoven, The Netherlands

For more information call:

In the U.S.A. (800) 443-5853 or

Fax (425) 446-5116

In Europe/M-East/Africa +31 (0) 40 2675 200 or

Fax +31 (0) 40 2675 222

In Canada (800)-36-FLUKE or

Fax (905) 890-6866

From other countries +1 (425) 446-5500 or

Fax +1 (425) 446-5116

Web access: <http://www.fluke.com>

© 2020 Fluke Corporation.

Specifications subject to change without notice.

11/2020 200427-en

Modification of this document is not permitted without written permission from Fluke Corporation.