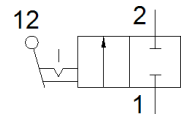
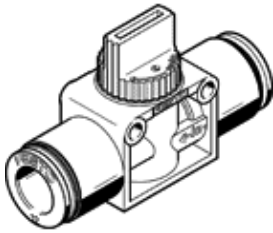


shut-off valve HE-2-QS-10

Part number: 153469

FESTO

This type is suitable for vacuum.



Data sheet

Feature	Value
Valve function	2/2 bistable
Pneumatic connection, port 1	QS-10
Pneumatic connection, port 2	QS-10
Type of actuation	manual
Mounting type	Optional Line installation with through hole
Standard nominal flow rate	761 l/min
Nominal size	7 mm
Operating pressure	-0.95 ... 10 bar
Ambient temperature	0 ... 60 °C
Material housing	PBT-reinforced
Operating medium	Compressed air in accordance with ISO8573-1:2010 [7:-:-]
Sealing principle	soft
Assembly position	Any
Design structure	Piston slide
Type of piloting	direct
Flow direction	non reversible
Note on operating and pilot medium	Lubricated operation possible (subsequently required for further operation)
Product weight	44 g
Materials note	Conforms to RoHS