



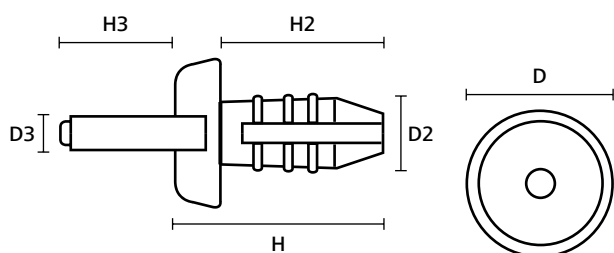
For installing wiring ducts into fixing holes

HelaDuct HTWD-R4 and HTWD-R6 rivets

HTWD-R4 and HTWD-R6 are used to rapidly mount and secure wiring ducts into fixing holes without the use of screws.

Features and benefits

- Very good mechanical properties
- Good resistance to vibration
- Easily and rapidly applied with HTWD-RT4 and HTWD-RT6 rivet tools
- Colour-coded for easy identification for use with rivet tools



HTWD-R4, -R6



HTWD-R4 and HTWD-R6 Rivet.

MATERIAL	Polyamide 6 (PA6)
Operating Temperature	-40 °C to +80 °C
Flammability	UL 94 V2

HF ✓

RoHS ✓

TYPE	Height (H)	Height (H2)	Height (H3)	Ø (D)	Ø (D2)	Ø (D3)	Colour	Pack Cont.	Article-No.
HTWD-R4	14.0	12.0	11.5	9.0	5.0	2.0	Blue (BU)	1,000 pcs.	181-42400
HTWD-R6	16.0	12.7	13.0	11.0	6.0	3.0	Black (BK)	250 pcs.	181-42600
	16.0	14.0	13.5	11.0	7.5	4.0	Orange (OG)	500 pcs.	181-42500

All dimensions in mm. Subject to technical changes.
Minimum Order Quantity (MOQ) may differ from package content.

For inserting R4 and R6 rivets

HelaDuct HTWD-RT4 and HTWD-RT6 Rivet Tools

HelaDuct HTWD-RT4 and HTWD-RT6 tools are used to insert HTWD-R4 and HTWD-R6 rivets into fixing holes and thus mounting ducts without the use of screws.

Features and benefits

- Durable and reliable
- Long aluminum body enables insertion even into very high ducts
- Soft plastic ergonomic handle
- Colour-coded for easy identification for use with correct rivets



Rivet Tools HTWD-RT4, -RT6.

MATERIAL	Metal (MET), Plastic (PL)
-----------------	---------------------------

RoHS ✓

TYPE	For Wiring Duct Rivets	Colour	Article-No.
HTWD-RT4	R4	Blue (BU)	181-41542
HTWD-RT6	R6	Orange (OG)	181-41564

Subject to technical changes.

