

# Actuator IA5



- ◆ IA5 is a high speed AC powered linear actuator designed with stainless steel extension tube, which is suitable for various outdoor industrial applications, such as construction machine, air bridge, mining transportation conveyor... etc. It also features its heavy load capability and low current deviation. The adjustable limit switches are equipped for users to fine-tune the stroke based on their needs. Ball screw or ACME screw threaded spindle is available for users to choose.
- ◆ Main applications : Industrial
- ◆ Input voltage : 115 V / 60Hz ; 230 V / 50Hz
- ◆ Max. dynamic load : 3,500N (ACME), 7,000N (Ball screw)
- ◆ Max. static load : 4,500N (ACME), 13,600N (Ball screw)
- ◆ Max. current : 3.5A @ 115V AC
- ◆ Max. speed : 52.8mm/sec @ no load
- ◆ Stroke : 102~610 mm
- ◆ Duty cycle : 25% or 4 min. continuous operation in 12 min.
- ◆ Working temperature range : -26°C ~ +65°C
- ◆ IP protection level : IP54
- ◆ Color : Black
- ◆ Certified : UL E362815, RoHS, EN61000-3, EN61000-4, EN6100-6, EN60335-1
- ◆ Overload protection by clutch
- ◆ Power wire length : 600mm (with tinned wires)

---

## Options

- ◆ IP65
- ◆ Potentiometer, analog positioning feedback
- ◆ Adjustable limit switches (IP65 grade is not allowed for users to adjust limits switches)
- ◆ Optional or Customized Front/Rear Mounting Bracket

## Compatibility

### 1. Control Box

None

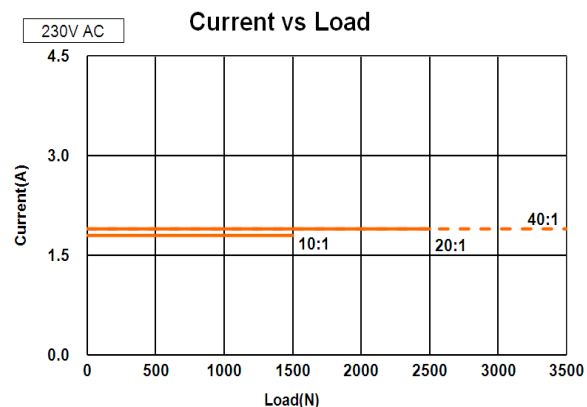
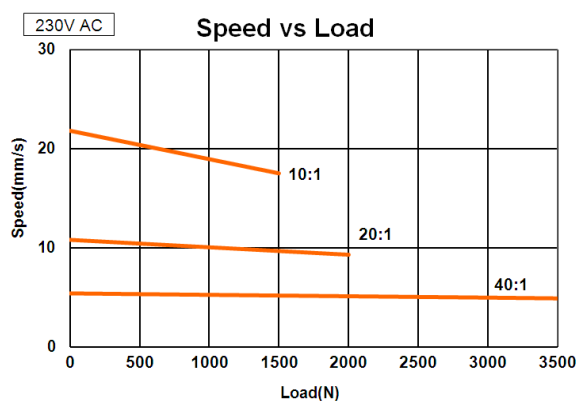
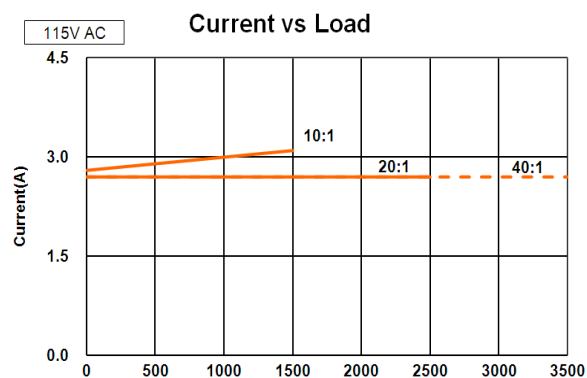
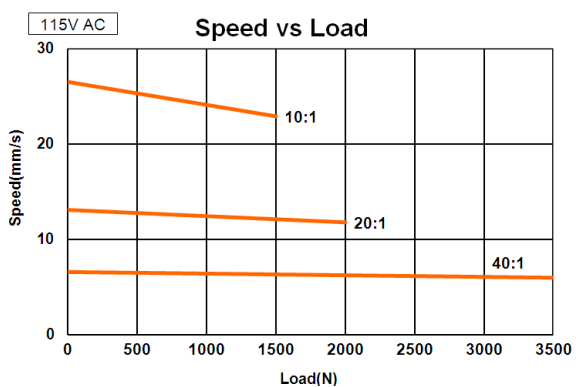
### 2. Accessory

None

# Performance Data

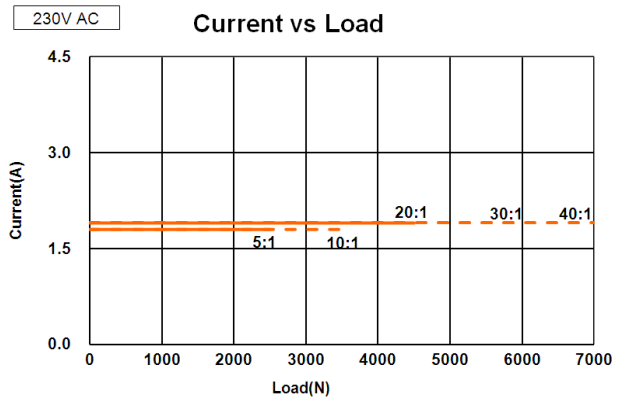
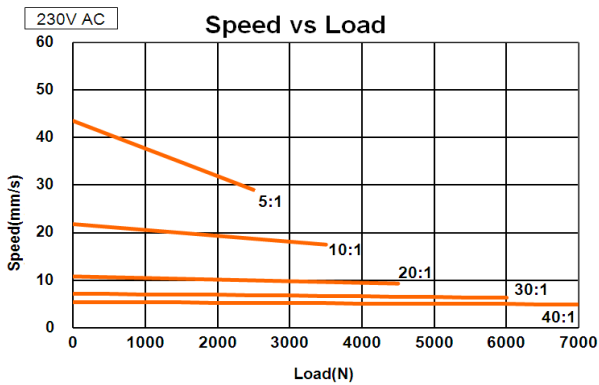
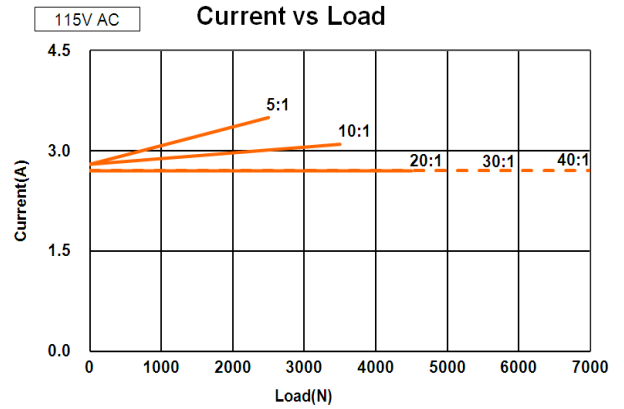
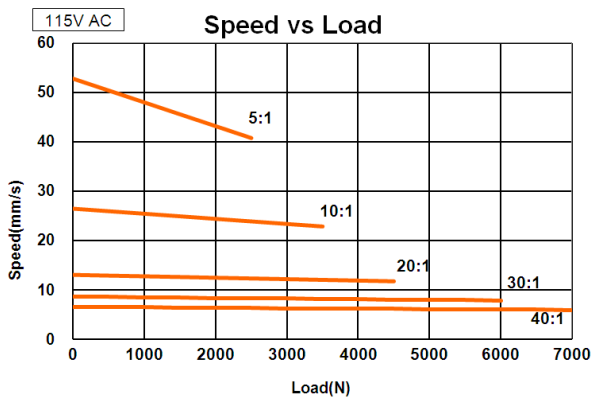
## ◆ IA5 ACME

Model No.	Push/Pull Max. (N)	Speed (mm/s)				Current (A)			
		115V		230V		115V		230V	
		No load	Full Load	No load	Full Load	No load	Full Load	No load	Full Load
IA5-XXX-10-A-XXX	1500	26.5	22.9	21.8	17.5	2.8	3.1	1.8	1.8
IA5-XXX-20-A-XXX	2500	13.1	11.8	10.8	9.3	2.7	2.7	1.9	1.9
IA5-XXX-40-A-XXX	3500	6.6	6.0	5.4	4.9	2.7	2.7	1.9	1.9



◆ IA5 Ball Screw

Model No.	Push/Pull Max. (N)	Speed (mm/s)				Current (A)			
		115V		230V		115V		230V	
		No load	Full Load	No load	Full Load	No load	Full Load	No load	Full Load
IA5-XXX-05-B-XXX	2500	52.8	40.8	43.5	29.0	2.8	3.5	1.8	1.8
IA5-XXX-10-B-XXX	3500	26.5	22.9	21.8	17.5	2.8	3.1	1.8	1.8
IA5-XXX-20-B-XXX	4500	13.1	11.8	10.8	9.3	2.7	2.7	1.9	1.9
IA5-XXX-30-B-XXX	6000	8.7	7.9	7.2	6.3	2.7	2.7	1.9	1.9
IA5-XXX-40-B-XXX	7000	6.6	6.0	5.4	4.9	2.7	2.7	1.9	1.9

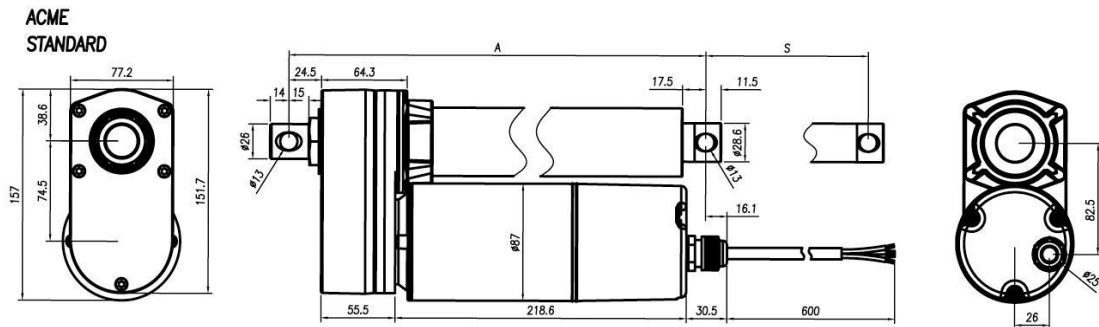


# Dimensions

## IA5 ACME types

### ◆ Standard

	4"	6"	8"	10"	12"	18"	24"
Stroke (S±2.5mm)	102	153	203	254	305	457	610
Retracted Length (A±3.8mm)	262	313	364	414	465	668	821

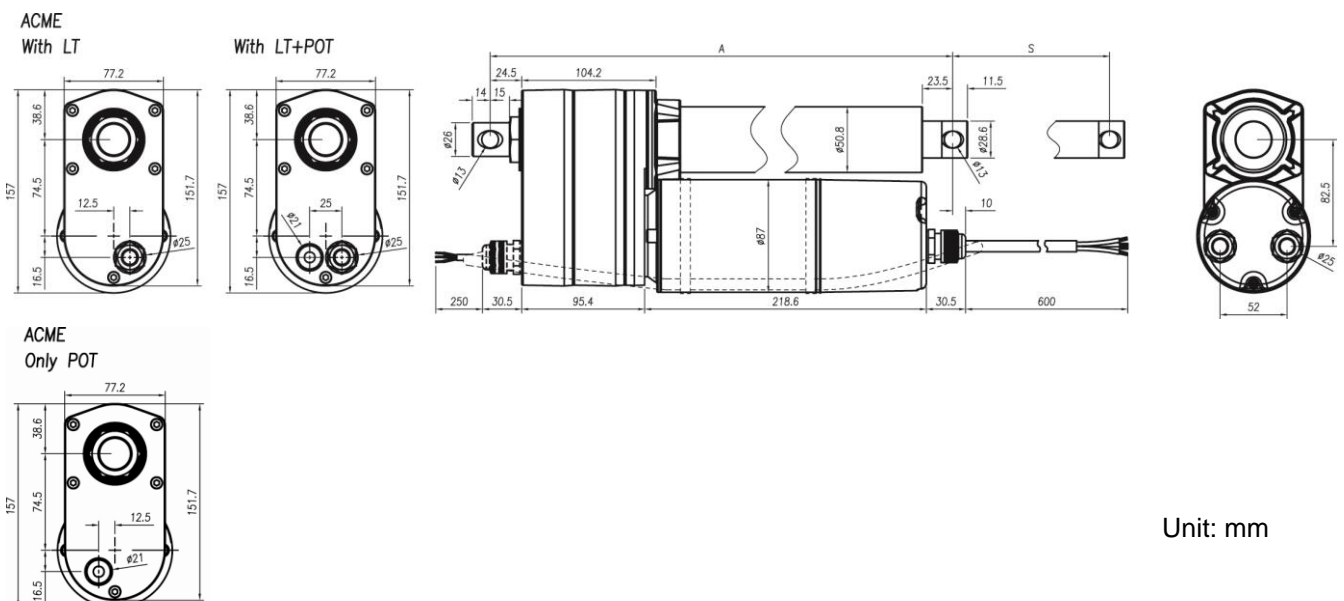


### ◆ With potentiometer (POT) only

	4"	6"	8"	10"	12"	18"	24"
Stroke (S±2.5mm)	102	153	203	254	305	457	610
Retracted Length (A±3.8mm)	302	353	404	454	505	708	861

### ◆ With limit switches or with both limit switches and POT

	4"	6"	8"	10"	12"	18"	24"
Stroke (S±5.0mm)	102	153	203	254	305	457	610
Retracted Length (A±5.0mm)	359	410	460	511	613	765	918

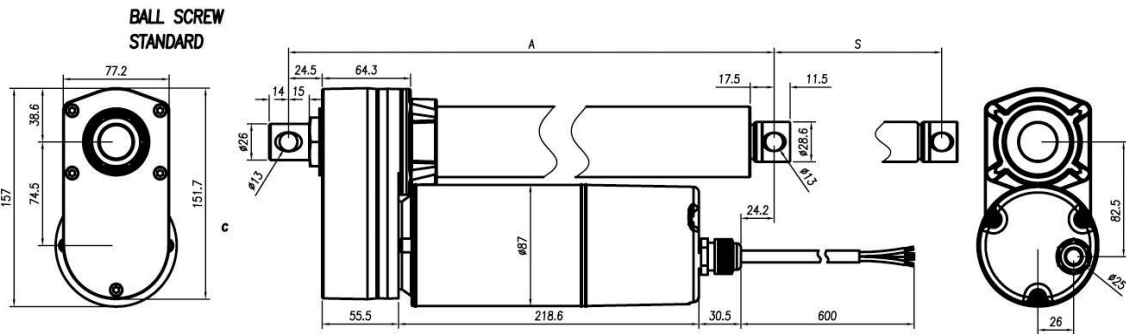


Unit: mm

# IA5 Ball Screw types

## ◆ Standard

	4"	6"	8"	10"	12"	18"	24"
Stroke (S±2.5mm)	102	153	203	254	305	457	610
Retracted Length (A±3.8mm)	302	353	404	455	506	735	888

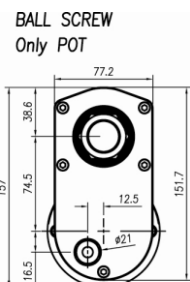
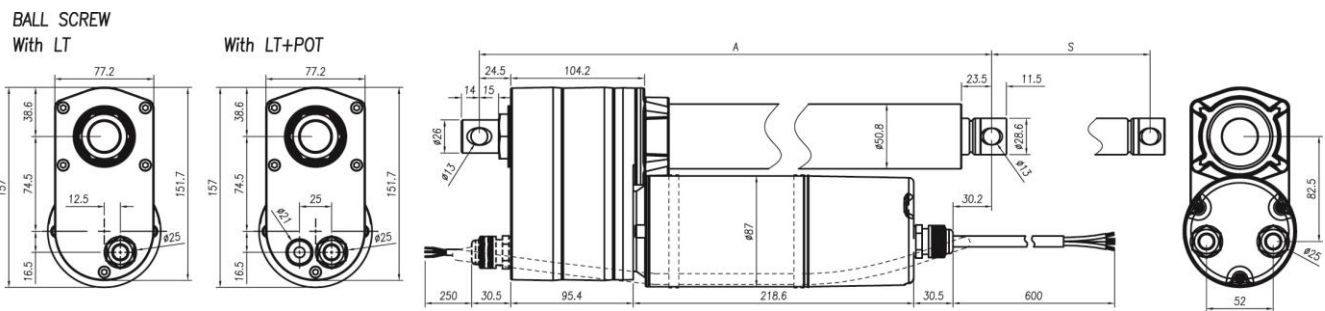


## ◆ With potentiometer (POT) only

	4"	6"	8"	10"	12"	18"	24"
Stroke (S±2.5mm)	102	153	203	254	305	457	610
Retracted Length (A±3.8mm)	342	393	444	495	546	775	928

## ◆ With limit switches or with both limit switches and POT

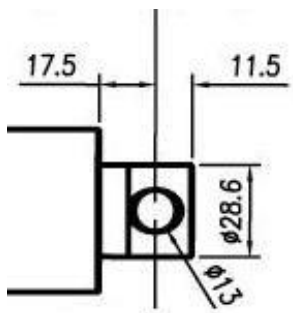
	4"	6"	8"	10"	12"	18"	24"
Stroke (S±5.0mm)	102	153	203	254	305	457	610
Retracted Length (A±5.0mm)	399	450	501	552	680	832	985



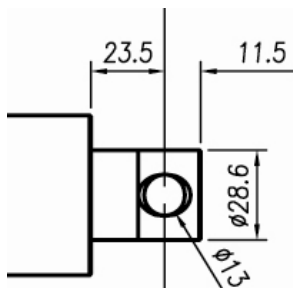
Unit: mm

## Front connector

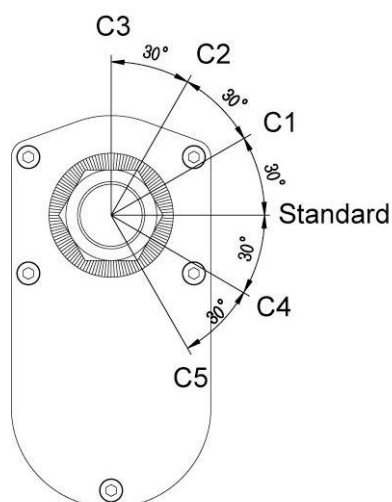
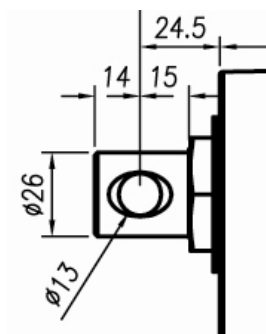
- ◆ Standard or with POT only



- ◆ With limit switches or with both limit switches and POT



## Rear connector and the orientation of clevis

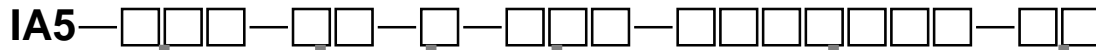


Unit: mm

## Wiring

- ◆ Please refer to IA5 User Guide.

# Ordering Key



## Input Voltage

115 : 115V AC  
230 : 230V AC

## Gear Ratio

05 : 5:1 (Ball screw only)  
10 : 10:1  
20 : 20:1  
30 : 30:1 (Ball screw only)  
40 : 40:1

## Spindle Type

A : ACME  
B : Ball Screw

## Stroke

102 : 102mm  
153 : 153mm  
203 : 203mm  
254 : 254mm  
305 : 305mm  
457 : 457mm  
610 : 610mm

## Option

Blank : None  
LT : Limit switch  
POT : Potentiometer  
IP65 : IP65

## Rear Clevis Orientation

Blank : 0° (Standard)  
C1 : 30° CCW (view from rear connector)  
C2 : 60° CCW  
C3 : 90° CCW  
C4 : 30° CW  
C5 : 60° CW

### Terms of Use

The user is responsible for determining the suitability of MOTECK products for specific applications. Due to continuous development in order to improve its products, MOTECK products are subject to frequent modifications and changes without prior notice. MOTECK reserves the right to discontinue the sale of any products displayed on its website or listed in its catalogue or other written materials drawn up by MOTECK.