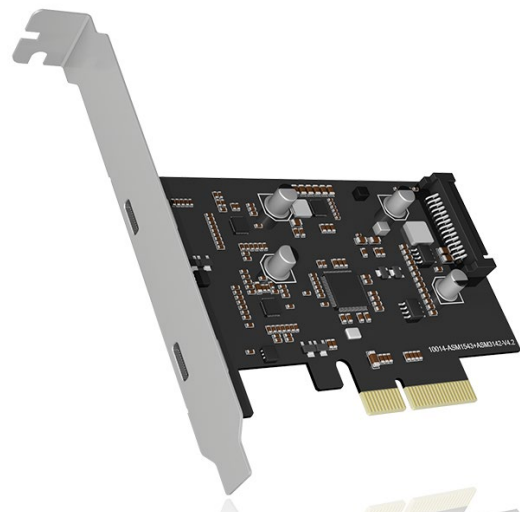


## ICY BOX IB-PCI1902-C31

### USB Type-C® PCIe controller card

#### Key features

- 2x USB 3.1 (Gen 2) Type-C® interface
- Adds two external USB Type-C® 3.1 (Gen 2) ports to the PC
- Supports USB data transfer rates of up to 10 Gbit/s
- PCI-Express base specification revision 3.0 (x4)
- Fits in PCIe x4, x8 and x16 slot
- Asmedia ASM1543 and ASM3142 USB 3.1 (Gen 2) controllers
- Transmission rates of up to 10 Gbit/s with simultaneous data transfer
- Supports the following operating systems: Windows®, Linux®



#### Packing content

1x IB-PCI1902-C31, 1x additional low-profile bracket, 1x set of screws, 1x screw driver, 1x manual

#### Technical data

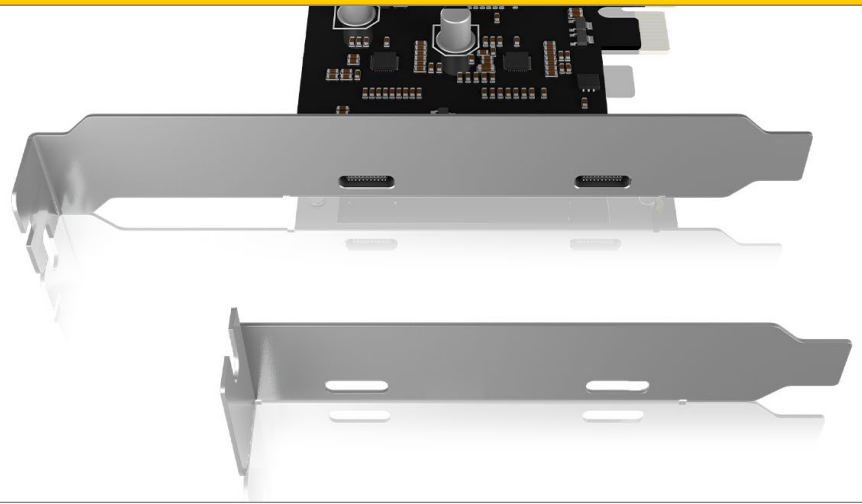
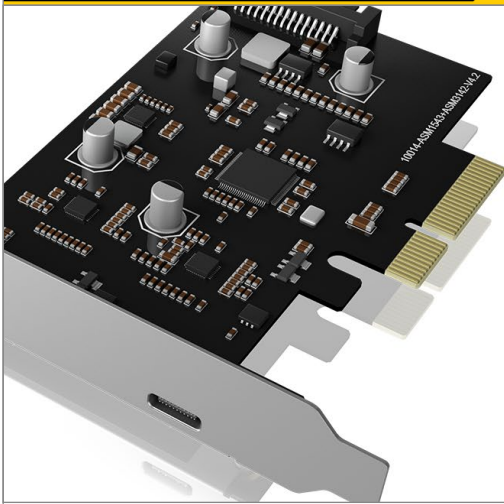
<b>Model</b>	IB-PCI1902-C31
<b>Article no.</b>	60899
<b>EAN code</b>	4250078172321
<b>Brand</b>	ICY BOX
<b>Colour</b>	Silver/black
<b>Material</b>	Metal, plastic
<b>Connection to hostcomputer</b>	PCIe x4
<b>Transfer rate</b>	Up to 10 Gbit/s
<b>External interface</b>	2x USB Type-C®
<b>Power supply</b>	1x 15 pin SATA
<b>Operating system</b>	Windows®, Linux

#### System requirements

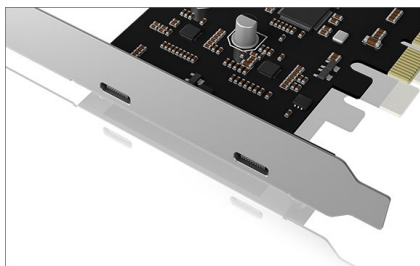
Windows®, Linux®  
 One available x4, x8 or x16 PCI-Express slot (at least PCI-Express Gen. 3.0 x4 lanes).  
 Power supply with one free SATA 15 pin power plug

#### Note:

The IB-PCI1902-C31 uses the PCIe Gen 3.0 x4 (32 Gbit/s) interface connector design. In order to get USB 3.1 (Gen 2) performance, please use a PCIe slot based on PCI-Express Generation 3.0 x4 lanes for card installation. However, some PC systems do not support PCIe Gen. 3.0 specification, so the IB-PCI1902-C31 cannot support the full performance of up to 2x 10 Gbit/s simultaneously. Please check your PC system for this system detail information, otherwise you will only achieve lower data transfer rates.

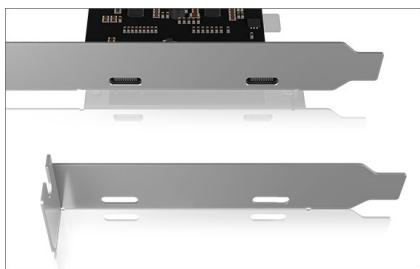


## ICY BOX **IB-PCI1902-C31** USB Type-C® PCIe controller card



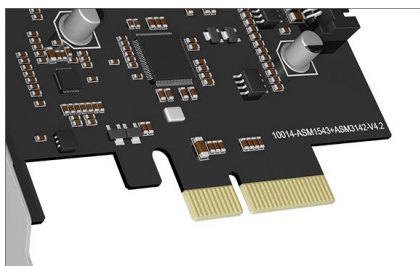
### The upgrade for your computer

The ICY BOX® expansion card IB-PCI1902-C31 supports USB 3.1 (Gen 2) for both AMD and Intel platforms. With data transfer rates of up to 2x 10 Gbit/s, the two USB Type-C® ports ensure top speed. This is how you bring your PC up to date.



### Fast and easy installation

The fast PCIe 3.0 expansion card fits into x4, x8 or x16 slots. It integrates seamlessly into your computer casing, because in addition to the full-profile bracket, a half-profile bracket is also included in the scope of delivery. The card is supplied with power via a 15 pin SATA connector.



### Highest quality

The IB-PCI1902-C31 also follows the highest ICY BOX® quality standards and uses the best components available. The new PCIe expansion card has been thoroughly tested and is ready for immediate use, delivering reliable performance at a reasonable price.

#### Logistical data

**Packing unit:** 60 pcs./carton  
**Total weight:** 7.74 kg  
**Gross weight:** (with packing): 0.118 kg  
**Net weight:** 0.029 kg

**Dimension/Carton:** 310x300x400 mm  
**Dimension (with packing):** 25x125x130 mm  
**Dimension of article:** 100x7x65 mm  
**Country of Origin:** China