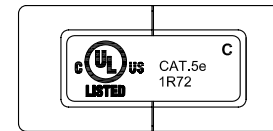
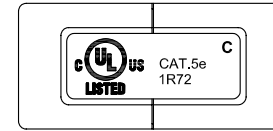
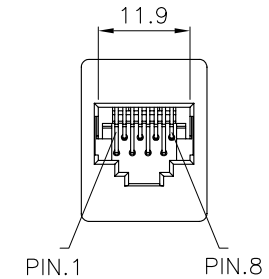
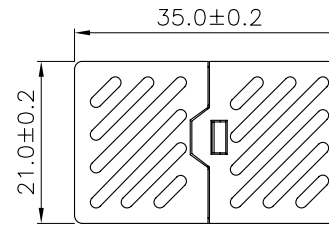
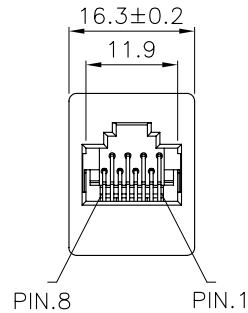


SCALE 1/1



Specification :

Material :

1. RJ45 Jack :
 - 1-1. Housing : ABS, UL 94V-0, with optional color.
 - 1-2. Contact Bracket : PC, UL 94V-2, Transparent color.
2. RJ45 Jack Contact :
 - 3-1. Material : Phosphor Bronze with Nickel plated.
 - 3-2. Finish : 50 micro-inch Gold plated on Plug contact area.
3. PCB : FR4, UL 94V-0.

Performance :

- a. Insertion force : 20N max. (IEC 60603-7-4).
- b. Retention strength : 7.7 kg between Jack and Plug.
- c. Operating temperature : -10°C to 60°C. (ISO/IEC 11801, ANSI/TIA/EIA 568 B.2)
- d. Life(mating cycles) : 750 cycles min. (ISO/IEC 11801, IEC 60603-7-4)
- e. The Cat.5e transmission performance is in compliance with the ANSI/TIA/EIA 568 B.2 standard.

Remark : AAEBB01011311XX

(1)

- (1) XX : Housing Color
01=Black, 05=White



GENERAL TOLERANCE OF DIMENSIONS X.XXX ±0.005 X.XX ±0.05 X.X ±0.1	DRAWING	17.JUN.2010	QIQI	
	CHECK	17.JUN.2010	JANE	
	APPROVAL	17.JUN.2010	JAIMY	
	DATE		NAME	ITEM NO.: AAEBB01011311XX
SCALE	1/1 (A4)	UNIT	mm	DES.: CAT.5E UNSHIELDED IN-LINE COUPLER
DRAWING NO. AAEBB01011311XX JE315A-CE-XX(SA5)		DRAWING CLASSIFICATION		S SHEET 1 OF 1