

Important!

- Do not expose the Intelligent UPS 1500 VA USB to extreme temperatures. Do not place the device in direct sunlight or in the direct vicinity of heating elements.
- Do not use the Intelligent UPS 1500 VA USB in extremely moist or dusty surroundings.
- Protect the device against powerful shocks and falls – they may damage the internal electronics.
- Never attempt to open the device yourself, there are no serviceable parts inside. Opening the device will cause the warranty to lapse.

**WARNING**

- Do not connect devices with sockets other than the IEC sockets like those on the UPS.
- Do not connect non-computer related items, such as medical equipment, life-support equipment, microwave ovens or vacuum cleaners to the UPS.
- Do not use the included IEC extension cord for any other than its intended purpose.
- Do not connect a power strip or additional surge suppressor to the UPS.
- Do not connect a laser printer or scanner to the UPS.
- Do not connect the UPS's own output to its input.
- Servicing the UPS should be performed by or under supervision of authorized personnel only.

Failure to comply to the above warnings may result in damage to you, your devices and/or the UPS and will void the warranty under the user abuse clause!

In case of emergency, press the power switch to turn the UPS off and unplug the power to disable the UPS

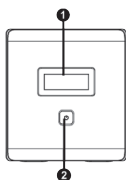
Package contents**In this package you will find:**

- Intelligent UPS 1500 VA USB
- 1 x IEC power cord
- 2 x IEC extension cord
- USB cable
- CD with software and manual

If you find that any of the package contents are missing, please return the package to the sales point where it was bought.

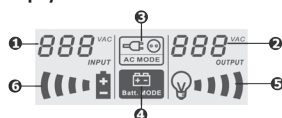
Product description

Front



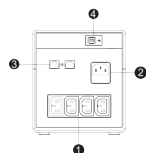
1. LCD display
2. LCD Power switch

Display



1. Input voltage
2. Output voltage
3. AC mode indicator
4. Battery mode indicator
5. Load indicator, flashing indicates overload
6. Battery charge level indicator, flashing indicates low battery

Back



1. IEC output sockets
2. IEC input socket with fuse tray
3. RJ-45 pass-through with surge protection (for phone / ISDN / Ethernet)
4. USB connection to PC

Alarms

Battery mode:	one beep every 10 seconds (can be disabled in software)
Low battery:	one beep every second
Overload:	two beeps per second
Battery replacement alarm:	one beep every two seconds
Fault:	continuous beep

Hardware installation

1. Unpack the UPS, check the package contents, and inspect all items to ensure that nothing is damaged.
2. Install the UPS in a protected area free of excessive dust and with adequate ventilation. Maintain a 20 cm perimeter around the UPS to avoid interference and ensure sufficient air flow.
3. Turn off and unplug all devices you wish to connect to the UPS.
4. Connect the device(s) to the UPS using the included IEC extension cord(s).
5. Connect the UPS to a wall socket using the included IEC power cord.
6. Turn on the UPS by pressing the power switch.
7. Turn on the device(s) connected to the UPS

Note: It takes at least 6 hours before the UPS is fully charged. To condition the batteries for maximum capacity, it is recommended to fully discharge the UPS once after it has charged.

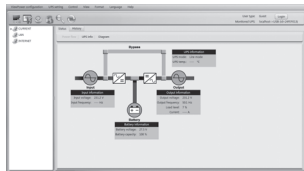
Software installation

Place the Sweex CD in the CD player, click "Drivers and Software" and follow the instructions on screen.

After the software has installed, you can open it by double-clicking the ViewPower icon in the bottom-right of your screen:



Your browser will open, displaying the software's configuration page:



Note: The default password to log in is "administrator". For more information on the software's operation, please consult the ViewPower manual.

Warranty

Thank you for purchasing this Sweex product. Sweex devotes ample attention and care to the quality, reliability, functionality, durability and user friendliness of all its products. In this way Sweex distinguishes itself in the market and can we convince you as a buyer to continue purchasing products of the Sweex brand. We wish you a lot of pleasure with your purchase.

An important extra advantage for you is the possibility of product registration.

You can register the product you purchased online on www.sweex.com/productregistration.

By registering your product Sweex offers you a number of important yet equally useful advantages.

For example, if you wish so, you are regularly informed by us of the latest developments in our assortment by means of a digital newsletter.

Where applicable, you also automatically receive the latest drivers and/or firmware from us for the product you purchased to preserve or improve the compatibility and the performance.

Moreover, our support desk can assist you faster in case of possible support questions about the product if you registered the product.

Sweex warranty conditions.

2-year standard warranty within the EU

In a standard manner a warranty period of 2 years as from the purchase date is available for this Sweex product within the EU.

Should you wish to invoke this warranty within the first 2 years after the purchase then you can directly apply to the point of sale where you purchased the product for the conditions and procedures.

Matters that are excluded from the warranty

The warranty of Sweex only covers manufacturing defects. Excluded from the warranty are accessories like batteries, rechargeable batteries and also supplied software, where applicable.

The liability of Sweex is limited to the costs of repair and/or replacement of the product covered by the warranty.

The standard warranty is null and void if the product has been opened, changes have been made, physical damage was caused to the product and if the product is used for another purpose than for which it is originally meant.

All brand names and associated rights mentioned in this manual are and remain the sole property of the rightful claimant.