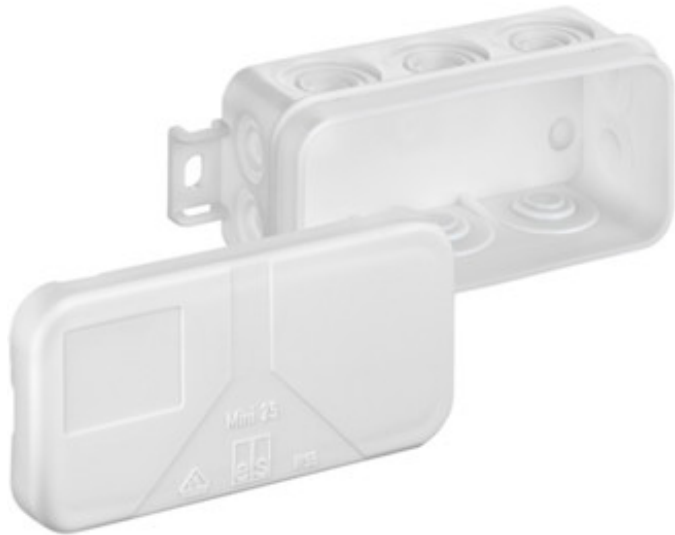




JUNCTION BOX

Mini 25-L/w



Mini 25-L/w

Junction box

89 x 43 x 37 mm

Article number: 31060801

Junction box acc. to DIN EN 60670 (VDE 0606), 10 entries, 2 floor entries, suitable for confined installation environments such as suspended ceilings and cable ducts, complete with punching tool and blanking plug, with external fixing positions

white, without terminals, for VDE approved single terminals



Technical data

Measures

Width:	89 mm
Length:	43 mm
Height:	37 mm
Inner height:	30 mm
Inner width:	30 mm
Inner length:	97 mm

Material:

material:	polyethylene
Box:	polyethylene
Cover:	Polypropylene

Certificates



Accessory

HandyGrip VG 20 - Terminal strip

HandyGrip VG 21 - Terminal strip

HandyGrip VG 21 w - Terminal strip

HandyQuick SQ 32 - Screwless terminal

HandyQuick SQ 52 - Screwless terminal

Environmental attributes

Max. rel. humidity at 25° C (short term):	95%
Max. rel. humidity at 40° C:	50%
Ambient temperature (min.):	-25 °C
Ambient temperature (max.):	40 °C
Ambient temperature (24 h):	35 °C



JUNCTION BOX

Mini 25-L/w

Other attributes

Ingress protection:	IP55 - acc. to EN 60529 / DIN VDE 0470-1
Impact resistance:	IK07 acc. DIN EN 5012 / VDE 0470 Part 100
Color:	white
Rated insulation voltage AC:	400 V
VDE mark of conformity:	DIN EN 60670
weatherproof:	No
Rated cross section:	2,5 mm ²
Tackable:	No
Explosion safety:	none
Functional integrity:	none
sealable:	No
Heavy metals-free:	Yes
PVC-free:	Yes
Silicone-free:	Yes
Entries:	10
Equipment:	None