



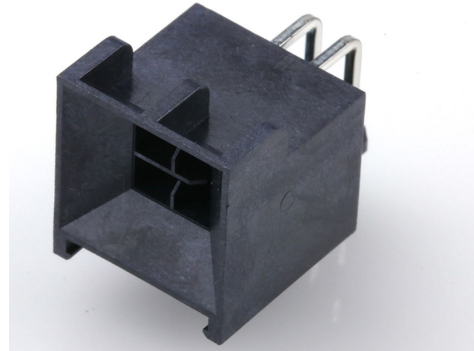
**Part Number :** [2196371108](#)

**Product Description :** Nano-Fit BMI Right-Angle Header, Through Hole, 2.50mm Pitch, Dual Row, 8 Circuits, Tin (Sn) Plating, Black, Glow-Wire Capable, Tray

**Series Number :** 219637

**Status :** Active

**Product Category :** PCB Headers and Receptacles



---

## Documents & Resources

### Drawings

[2196371108\\_sd.pdf](#)

[2196371000-PK-000.pdf](#)

### 3D Models and Design Files

[2196371108\\_stp.zip](#)

### Specifications


[AS-105300-100-001.pdf](#)

[2192681000-PS-000.pdf](#)

---

## Product Environment Compliance

### Compliance

GADSL/IMDS	Not Relevant
China RoHS	
EU ELV	Not Relevant
Low-Halogen Status	Low-Halogen per IEC 61249-2-21
REACH SVHC	Not Contained per D(2024)6225-DC (07 Nov 2024)
EU RoHS	Compliant per EU 2015/863

### [Multiple Part Product Compliance Statements](#)

- Eu RoHS
- REACH SVHC
- Low-Halogen

### [Multiple Part Industry Compliance Documents](#)

- IPC 1752A Class C
- IPC 1752A Class D
- Molex Product Compliance Declaration
- IEC-62474
- chemSHERPA (xml)

EU RoHS Certificate of Compliance

---

## Part Details

### General

Status	Active
Category	PCB Headers and Receptacles
Series	219637
Description	Nano-Fit BMI Right-Angle Header, Through Hole, 2.50mm Pitch, Dual Row, 8 Circuits, Tin (Sn) Plating, Black, Glow-Wire Capable, Tray
Application	Power, Wire-to-Board
Component Type	PCB Header
Product Name	Nano-Fit BMI
UPC	196823409134

### Agency

CSA	LR19980
UL	E29179

### Electrical

Current - Maximum per Contact	5.0A
Voltage - Maximum	250V AC (RMS)/DC

### Physical

Breakaway	No
Circuits (Loaded)	8
Circuits (maximum)	8
Color - Resin	Black
Durability (mating cycles max)	25
Glow-Wire Capable	Yes

Guide to Mating Part	Yes
Keying to Mating Part	Yes
Lock to Mating Part	Yes
Material - Metal	Brass
Material - Plating Mating	Tin
Material - Plating Termination	Tin
Material - Resin	Liquid Crystal Polymer
Net Weight	1.770/g
Number of Rows	2
Orientation	Right Angle
Packaging Type	Tray
PC Tail Length	3.20mm
PCB Locator	Yes
PCB Retention	Yes
PCB Thickness - Recommended	1.60mm, 2.40mm
Pitch - Mating Interface	2.50mm
Pitch - Termination Interface	2.50mm
Plating min - Mating	1.524µm
Plating min - Termination	1.524µm
Polarized to Mating Part	Yes
Polarized to PCB	Yes
Shrouded	Yes
Stackable	No
Temperature Range - Operating	-40° to +125°C
Termination Interface Style	Through Hole

---

## Mates With / Use With

### Mates with Part(s)

Description	Part Number
Nano-Fit BMI Receptacle Housing, 2.50mm Pitch, Dual Row, 8 Circuits, Black, Glow-Wire Capable	<u>2192681208</u>

---



---

This document was generated on Jan 17, 2025