

NT910 G

NB-IoT Terminal with 4G – LTE Cat M1 for industrial applications

The NT910 G is an industrial terminal based on LTE Cat M1 technology, as well as NB-IoT with GSM / GPRS fallback.

Both Cat M1 and NB-IoT have significantly better penetration within buildings compared to other mobile radio technologies. Therefore, this terminal can be used especially well for applications that could not be reached via mobile radio before.

In case of a temporary failure of a primary mobile radio network, the 2G network serves as a fallback option. A 2G reception is precondition in this case.

Due to the integrated power saving mode, applications can be realized that have particularly high requirements for low power consumption.

For the connection of the terminal a RS232 interface and a USB 2.0 interface are available.

System integrators can develop their own applications in the programming language C and execute them on the terminal.

Advantages

- Stationary applications can be monitored remotely and service calls can be reduced and optimized
- Very good penetration of mobile radio technologies within buildings
- Fallback option in case of temporary failure of a mobile radio technology
- Robust design for industrial use
- Extremely low power consumption in power saving mode
- Programmable via C

Performance Features

- LTE Cat. M1 / NB-IoT
- Quad band GSM
- Wireless firmware upgrade (FOTA)
- RS232 & USB 2.0 interfaces
- 1 analog input



Examples of applications



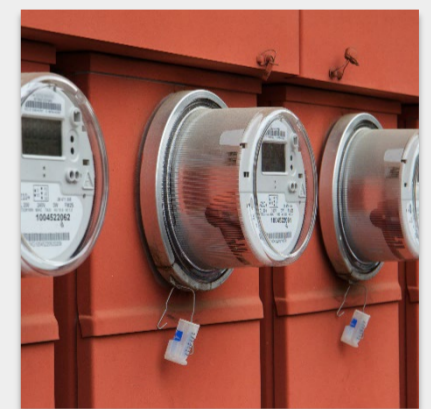
Monitoring of vending machines



Monitoring of industrial plants



Intelligent control of power grids



Transmission of smart meter data for e.g. electricity, gas and water



Monitoring of heating, ventilation and air conditioning systems

Technical data

Mobile details

- Module: Telit ME910C1-WW
- 3GPP Version 13 compliant
- Dual mode LTE Cat. M1/NB1
- 4G frequency bands: B1(2100) / B2(1900) / B3(1800) / B4(AWS1700) / B5(850) / B8(900) / B12(700) / B13(700) / B18(800) / B19(800) / B20(800) / B26(850) / B28(700)
- 2G frequency bands: B2(1900) / B3(1800) / B5(850) / B8(900)

Data transmission rate

- LTE Cat. M1
 - Uplink up to 375 kbit/s
 - Downlink up to 300 kbit/s
- LTE Cat. NB1
 - Uplink up to 62,5 kbit/s
 - Downlink up to 21 kbit/s
- EGPRS (2G fallback)
 - Uplink bis zu 236 kbit/s
 - Downlink bis zu 296 kbit/s

Software

- AT command set: 3GPP TS 27.005, 27.007 and Telit specific commands
- Firmware update: Serial + FOTA
- Programming language: C APIs for Telit AppZone
- TCP/IP Stack: TCP, UDP, ICMP, HTTP, DNS, FTP, SSL, SMTP, LWM2M
- IPv4/IPv6 Stack including TCP and UDP protocol
- OMA light weight M2M (LWM2M)

Power supply

- Voltage range: 5V-32V
- Power consumption (Idle Mode): ~13mA *
- Power consumption (Low Power Mode): ~3mA(*)
- USB host-powered: Optional (**)

Physical description

- Operating temperature: -30°C to +75°C
- Size: 77x66x26 mm
- Weight: 91g

Hardware features:

- IP protection : IP40
- Memory: >1 MB RAM / >4 MB Flash
- SIM-card holder: 1x (1,8/3 Volt)
- SIM Chip Option (**)
- LEDs: 1x Comm + 2x configurable
- Real time clock: With alarm function

Connectors

- D-Sub (9-polig): 1x socket for RS232
- USB: Mini-USB (USB 2.0)
- RJ11: 1x Power supply + 1x Analog input + 1x Optional output (**)
- FME: 1x Antenna connector

Approvals: CE

(*) Average values (including peaks) with minimum 1 minute measuring time

(**) Optional features: Please contact us to discuss your requirements for developing customized terminal products.

Additional extras (exemplary)

