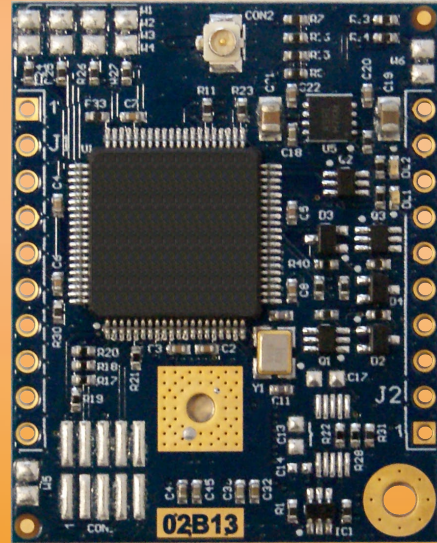


# UHF Module M800



## Description

The M800 embedded UHF RFID Module is a tiny read/write device with up to 20 dBm power output and a reading distance of up to 1.5 meters\*.

This 1 port reader Module is designed to perform with all ISO18000-6C tags including EPC Class1 Gen2 based on the UHF 840–960 MHz frequency band (ETSI + FCC). It can be used for a wide variety of applications such as mobile computing, industrial automation or logistics.

iDTRONIC's M800 is a compact single board UHF RFID reader Module which provides RS232 or TTL interfaces and comes with a complete SDK & testing software for Windows based operating systems.

### Applications

- Industrial Automation
- Logistics
- Tracking & Tracing
- Parking Automation

### Features

- Max 20 dBm power
- Up to 1.5 meters read range
- TTL or RS232 interface
- Supports ETSI & FCC frequencies

### RFID Options

- UHF (EPC C1 GEN2 / ISO18000-6C)

## Technical Data

Electrical Specifications	
Power Supply	5 Vdc (±5 % regulated)
Power Rating	max. 1.75W
Operating Frequency	840–960MHz, software programmable
Max. Power	max 20 dBm/100mW, software programmable in 1dBm steps
Operating Distance	up to 1.5 meters*
Antenna Connector	U.FL connector
Inputs / Outputs	2 inputs / outputs software configurable
Status	2 LEDs
Interfaces	TTL (0–5V) RS232

Mechanical Specifications	
Dimensions	30.56 × 38.40 × 6.50 mm
Weight	13 g (maximal)

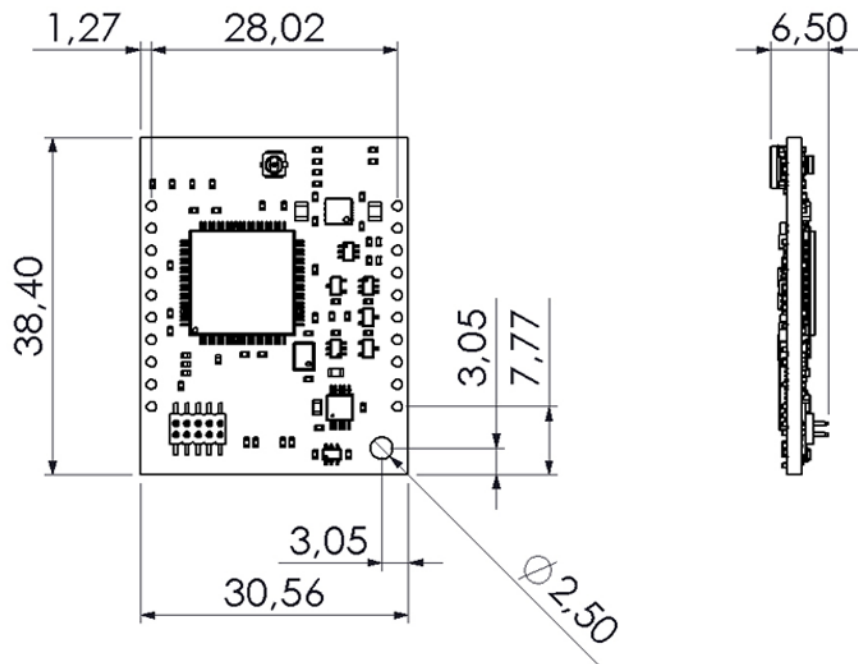
Environmental Conditions	
Operating Temperature	–10°C ... +55 °C
Storage Temperature	–20°C ... +85°C
Humidity	up to 95%, non condensing

Supported Standards / Tags	
Standard ISO 18000-6C (EPC Class 1 Generation 2)	

SDK Information	
Supported OS	Windows 7, 8
Supported Languages	C++, C# Command Protocol
Download Link	<a href="http://idtronic-rfid.com/support/sdks/">http://idtronic-rfid.com/support/sdks/</a>

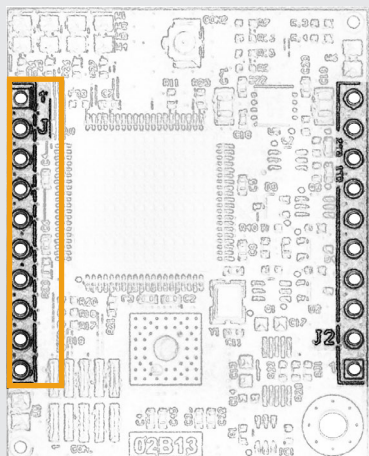
\*Reading distance depends on tag, antenna and environmental conditions

## Mechanical View



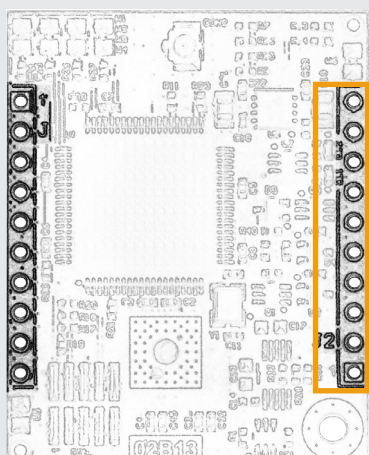
All Dimensions in millimeters (mm)

## Pin Layout



### Connections on J1

Pin	No	Description	
		TTL	RS232
n.c.	1	Not connected	Not connected
n.c.	2	Not connected	Not connected
+ Vin	3	DC power supply 5Vdc ±5%	DC power supply 5Vdc ±5%
- Vin (Gnd)	4	DC power supply return	DC power supply return
n.c.	5	Not connected	Not connected
n.c.	6	Not connected	Not connected
n.c.	7	Not connected	Not connected
n.c.	8	Not connected	Not connected
n.c.	9	Not connected	Not connected
n.c.	10	Not connected	Not connected



### Connections on J2

Pin	No	Description	
		TTL	RS232
+Vin	10	DC power supply 5Vdc ±5%	DC power supply 5Vdc ±5%
-Vin (GND)	9	DC power supply return	DC power supply return
LED 1	8	Green external LED	Green external LED
LED 2	7	Red external LED	Red external LED
I/O 2	6	Universal digital Input/Output	Universal digital Input/Output
n.c.	5	Not connected	Not connected
I/O 1	4	Universal digital Input/Output	Universal digital Input/Output
TEST	3	Do not connect	Do not connect
TxD	2	TTL serial line (to host)	RS232 serial line (to host)
RxD	1	TTL serial line (from host)	RS232 serial line (from host)

## Order Codes

Version	Order Code
TTL	OEM-UHF-M800-TTL
RS232	OEM-UHF-M800-232

iDTRONIC GmbH  
Ludwig-Reichling-Straße 4  
67059 Ludwigshafen  
GERMANY

Phone +49 (0) 621 66 90 09 4-0  
Fax +49 (0) 621 66 90 09 4-9  
E-Mail: info@idtronic-rfid.com  
Web: idtronic-rfid.com

For further information & prices, please contact info@idtronic-rfid.com

Subject to alteration without prior notice  
©2020 iDTRONIC GmbH