

LFZ|SKL

EMC Shield clamps



Product description

SKL shield clamps can be used for shielding single cables. The shield clamps enable an easy to use and reliable shielding of cables.

Cables are secured with a cable tie. Strain relief in accordance with VDE standards is achieved.

Shield clamps are easily attached to mounting plates via screw.

Advantages

- Integrated strain relief
- Optimal contact of the cable shielding
- Simple and tool-free assembly
- Permanent and continuous pressure on the cable shield - no adjustment of the spring load required
- Vibration-proof, maintenance free

Specification

Material

SKL-clamp Spring steel, zinc-plated

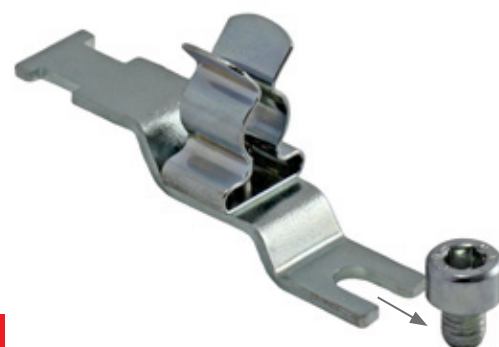
LFZ-foot Steel, galvanically zinc-plated
Fixing hole 4.2 mm for screw M4

Accessories

- Cable ties Page 73
- EMC ServiceBox Page 79
- Stripping tool Page 115

Type	Order No.	Shield diameter	Fixing hole	PU
LFZ SKL 1.5-3	36910	1.5 - 3.0 mm	4.2 mm	10
LFZ SKL 3-6	36915	3.0 - 6.0 mm	4.2 mm	10
LFZ SKL 6-8	36920	6.0 - 8.0 mm	4.2 mm	10
LFZ SKL 8-11	36925	8.0 - 11 mm	4.2 mm	10
LFZ SKL 12-16	36930	12 - 16 mm	4.2 mm	10
LFZ SKL 17-22	36935	17 - 22 mm	4.2 mm	10
LFZ SKL 23-29	36940	23 - 29 mm	4.2 mm	10

LFZ-U|SKL EMC Shield clamps



Type	Order No.	Shield diameter	Fixing hole	PU
------	-----------	-----------------	-------------	----

LFZ-U|SKL for M4 screws:

LFZ-U4 SKL 1.5-3	36886.1	1.5 - 3.0 mm	4.2 mm	10
LFZ-U4 SKL 3-6	36886.2	3.0 - 6.0 mm	4.2 mm	10
LFZ-U4 SKL 6-8	36886.3	6.0 - 8.0 mm	4.2 mm	10
LFZ-U4 SKL 8-11	36886.4	8.0 - 11 mm	4.2 mm	10

LFZ-U|SKL for M5 screws:

LFZ-U5 SKL 1.5-3	36887.1	1.5 - 3.0 mm	5.2 mm	10
LFZ-U5 SKL 3-6	36887.2	3.0 - 6.0 mm	5.2 mm	10
LFZ-U5 SKL 6-8	36887.3	6.0 - 8.0 mm	5.2 mm	10
LFZ-U5 SKL 8-11	36887.4	8.0 - 11 mm	5.2 mm	10

Product description

SKL shield clamps are used everywhere, where the shielding of single cables must be connected to the ground potential.

LFZ-U|SKL shield clamps enable an easy to use and a reliable shielding of cables. Cables are secured with a cable tie. Strain relief in accordance with VDE standards is achieved.

Shield clamps are easily attached to mounting plates via screw. The shield clamp LFZ-U|SKL is available for M4 or M5 screws. During assembly it is sufficient to loosen the existing screw slightly to be able to slide the clamp underneath before re-tightening the screw.

Advantages

- Integrated strain relief
- Optimal contact of the cable shielding
- Simple and quick assembly
- Permanent and continuous pressure on the cable shield - no adjustment of the spring load required
- Vibration-proof, maintenance free

Specification

Material

SKL-clamp **Spring steel, zinc-plated**

LFZ-foot **Steel, galvanically zinc-plated**

Fixing hole 4.2 mm / 5.2 mm for screw M4 / M5

Accessories

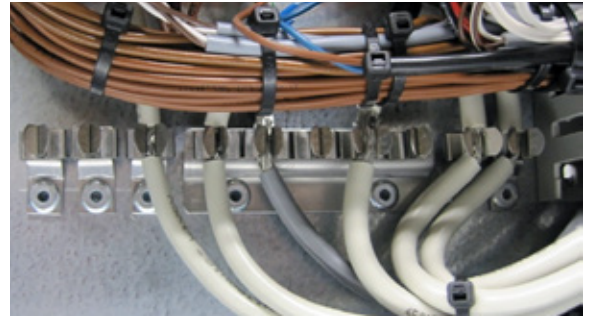
Cable ties [Page 73](#)

EMC ServiceBox [Page 79](#)

Stripping tool [Page 115](#)

LF|SKL

EMC Shield clamps



Product description

SKL shield clamps can be used for shielding single cables. The shield clamps enable an easy to use and a reliable shielding of cables.

Shield clamps are easily attached to mounting plates via screw.

Advantages

- Optimal contact of the cable shielding
- Simple and tool-free assembly
- Permanent and continuous spring load on the cable shield - no adjustment of the spring load required
- Vibration-proof, maintenance free
- High packing density because of an optimized arrangement

Specification

Material
 SKL-clamp Spring steel, zinc-plated
 LF-foot Steel, galvanically zinc-plated
 Fixing hole 4.2 mm for screw M4

Accessories

EMC ServiceBox Page 79
 Stripping tool Page 115

Type	Order No.	Shield diameter	Fixing hole	PU
LF SKL 1.5-3	36251	1.5 - 3.0 mm	4.2 mm	10
LF SKL 3-6	36253	3.0 - 6.0 mm	4.2 mm	10
LF SKL 6-8	36255	6.0 - 8.0 mm	4.2 mm	10
LF SKL 8-11	36256	8.0 - 11 mm	4.2 mm	10
LF SKL 12-16	36257	12 - 16 mm	4.2 mm	10
LF SKL 17-22	36258	17 - 22 mm	4.2 mm	10
LF SKL 23-29	36259	23 - 29 mm	4.2 mm	10